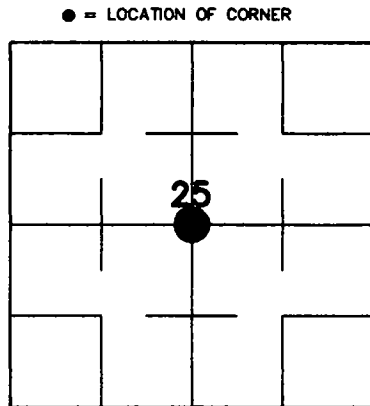


# U.S. PUBLIC LAND SURVEY MONUMENT RECORD

43310252020

HISTORY OF ORIGINAL CORNER ESTABLISHMENT AND SUBSEQUENT RESTORATION AND DESCRIPTION OF ANY RECORD, MONUMENT OCCUPATIONAL, TESTIMONIAL OR OTHER EVIDENCE CONSIDERED:

THE ORIGINAL CORNER WAS SET BY AUTHUR BROWN IN AUGUST OF 1930. BEARING TREES ARE AS FOLLOWS:  
 4" CEDAR N19°E 26 LKS (17.16')  
 6" CEDAR N 44°15'W 27 LKS (17.82')  
 I LOCATED THE MEANDER CORNER EAST OF THE SOUTH ¼ AND THE SE CORNER OF THE SECTION. TRAVERSED INTO THE AREA AND FOUND THE CONCRETE MONUMENT THAT BROWN CALLED FOR IN HIS NOTES. THE MONUMENT WAS BROKEN ABOUT 1 FOOT BELOW THE SURFACE SO I PULLED THE MONUMENT OUT AND SET A LANGLADE COUNTY ALUM. MONUMENT 6' LONG IN ITS PLACE, LEFT ALUM. MONUMENT STICKING UP ABOUT 8". ALSO FOUND THE NW BEARING TREE AND COULD STILL SEE SOME OF THE SCRIBING.

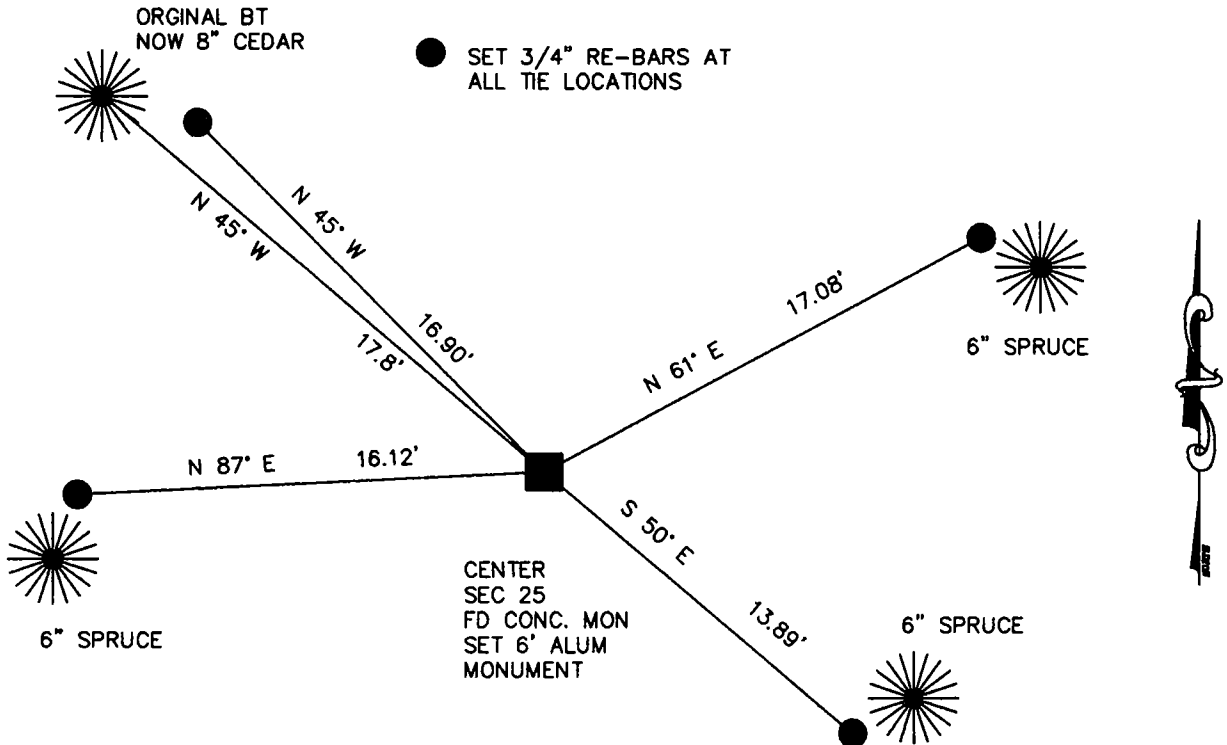


SECTION 25  
 TOWNSHIP 33 NORTH, RANGE 10 EAST  
 TOWN OF UPHAM  
LANGLADE COUNTY, WISCONSIN

CORNER WAS: (CHECK ALL THAT APPLY)

- RESTORED THROUGH ACCEPTANCE OF AN OBLITERATED EVIDENCE LOCATION
- RESTORED THROUGH ACCEPTANCE OF A FOUND PERPETUATED LOCATION
- CONSIDERED A LOST CORNER AND REESTABLISHED THROUGH LOST CORNER PROPORTIONATE METHODS (INCLUDE A PLAN VIEW DRAWING SHOWING DISTANCES AND DIRECTIONS TO OTHER PUBLIC LAND SURVEY CORNERS USED FOR PROPORTIONING AND DETERMINING THE CORNER LOCATION)
- RESTORED OR REESTABLISHED IN A LOCATION THAT DIFFERS FROM A PREVIOUS RESTORATION OR REESTABLISHMENT (INCLUDE A PLAN VIEW DRAWING AND INDICATE WHAT WAS SET AND/OR FOUND)
- CHECK IF THERE IS ADDITIONAL INFORMATION ON BACK

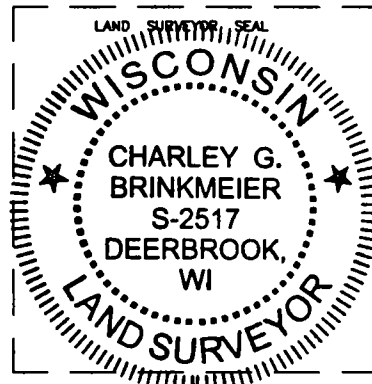
DESCRIBE THE MONUMENT AND ACCESSORIES USED TO PERPETUATE THE LOCATION OF THE CORNER. (INCLUDE A PLAN VIEW DRAWING AND INDICATE WHAT WAS SET AND/OR FOUND) ALSO INCLUDE FOUR TIES TO THE SECTION CORNER AND DESCRIPTION OF THE TIES.



CHARLEY G. BRINKMEIER

(type or print name) CERTIFY THAT THE CORNER LOCATION SHOWN ON THIS RECORD WAS DETERMINED BY ME OR UNDER MY DIRECTION AND CONTROL AND THAT THIS U.S. PUBLIC LAND SURVEY MONUMENT RECORD IS CORRECT AND COMPLETE TO THE BEST OF MY KNOWLEDGE AND BELIEF.

*Charley Brinkmeier*      6/26/03  
 SIGNATURE      DATE



7-23  
 33-10  
 INDEX NO.