

CERTIFIED LAND CORNER RESTORATION

Index No. ~~V-21-22~~  
 V 21.2  
 33

State of Wisconsin }  
 County of Langlade } ss.

I Raymond J. Hallisy, do hereby certify that on the 4th day of June, 1978, I found evidence of the M. C. corner of Section 25 & 36 Township 33, North, Range 10E, Fourth Principal Meridian, as described hereon; and that from this evidence I established a new monument and accessories as described hereon to perpetuate the original location of this corner.

History of original corner establishment:

Established in the Dependent Resurvey and Extension Survey in 1931, of Sections 26, 35, & 36.

Description of corner evidence found:

3" Brass Cap in 6" Cement.

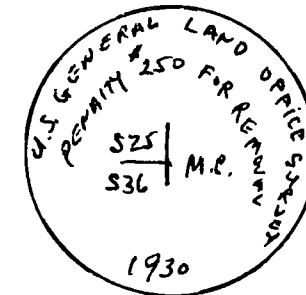
Resident witnesses:

.....  
 .....  
 .....

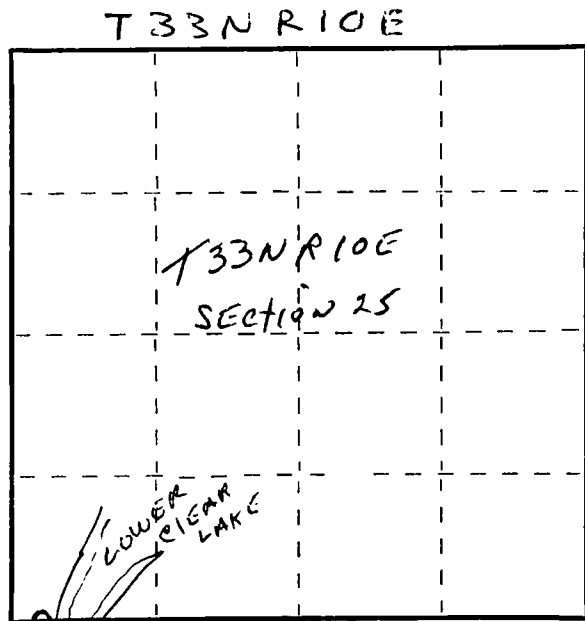
Description of monument and accessories I established to perpetuate the original location of this corner.

New PT's

White Firch	8"	S2W	3' 11"
White Firch	8"	N48W	4' 9"
Yellow Birch	4"	S65W	15'



FORM 985 H. C. MILLER CO., MILWAUKEE



○ = Corner monument restored.

Dated at Antigo, Wis., this 4th day of June, 1978.

Signature Raymond J. Hallisy Title Land Surveyor Registration No. S-685  
 (County Surveyor, Registered Land Surveyor, or other duly authorized official)

Office of Register of Deeds, County of \_\_\_\_\_, I hereby certify that the within instrument was filed in this office for record on the \_\_\_\_\_ day of \_\_\_\_\_, 19\_\_\_\_ at \_\_\_\_\_ o'clock \_\_\_\_\_ M.

.....  
 (Register of Deeds)

By.....Deputy