

CERTIFIED LAND CORNER RESTORATION

33-10

Index No. V-22

State of Wisconsin }
County of Langlade } ss.

History of original corner establishment:
None

I Raymond J. Hallisy, do hereby certify that on the 5th day of September, 1970, I found ~~evidence of the~~ established W 1/16 corner of Sec. 25 Township 33N, North, Range 10 E., Fourth, Principal Meridian, as described hereon; and that from this evidence I established a new monument and accessories as described hereon to perpetuate the original location of this corner.

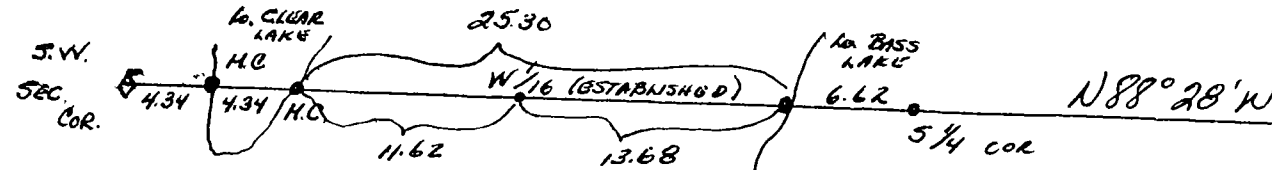
Description of corner evidence found:

West M.C. Lower Clear Lake, East M.C. Lower Clear Lake and West M.C. Lower Bass Lake, located on the south line of Sec. 25.

Resident witnesses:

Jerry Weix

Jerry Kryka

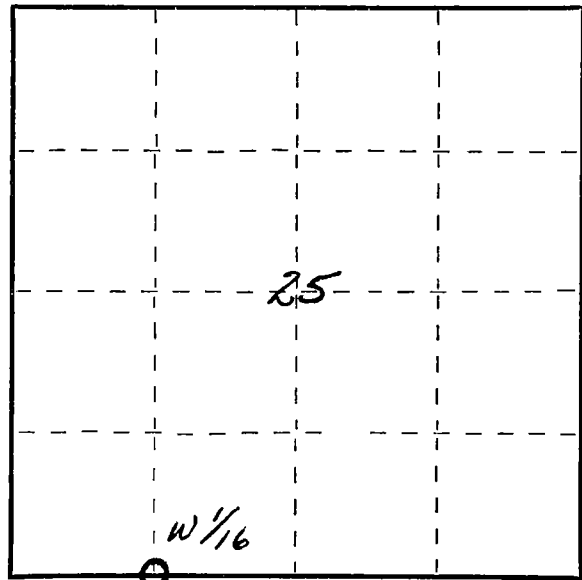


Description of monument and accessories I established to perpetuate the original location of this corner.

Distance between Sec. corner and S 1/4 40.60 Ch. Transit survey between M. corners on Lower Bass and Lower Clear Lakes. Recorded distance of 25.30 chains- our length 25 Ch 37.3 links and 5.8 links south of M.C. Line run west to east. Set corner at proportioned dist. of 11 Ch. 65.3 links and 13.72 chains, 4" brass cap in 2" iron pipe with Rock Mound

Bearing trees 12" Wh. Birch S77°E 175 Lks.
8" Wh. Birch S36 W 56.4 Lks.

BEARING: 12" WH. BIRCH S77°E 175 LKS
TREES: 8" WH. BIRCH S36°W 56.4 LKS



○ = Corner monument restored.

Dated at Antigo, Wis., this 5th day of September, 1970.

Signature: *Raymond J. Hallisy* Title: Reg. Land Surveyor Registration No. S-685
(County Surveyor, Registered Land Surveyor, or other duly authorized official)

Office of Register of Deeds, County of _____, I hereby certify that the within instrument was filed in this office for record on the _____ day of _____, 19____ at _____ o'clock _____ M.

(Register of Deeds)

By _____ Deputy