

U. S. PUBLIC LAND SURVEY MONUMENT RECORD

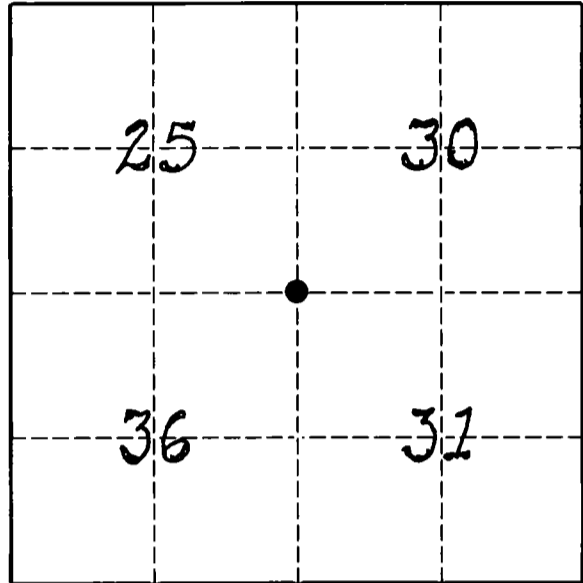
INSTRUCTIONS:

This record shall show the location of the corner and shall include all of the following nine elements (a through i).

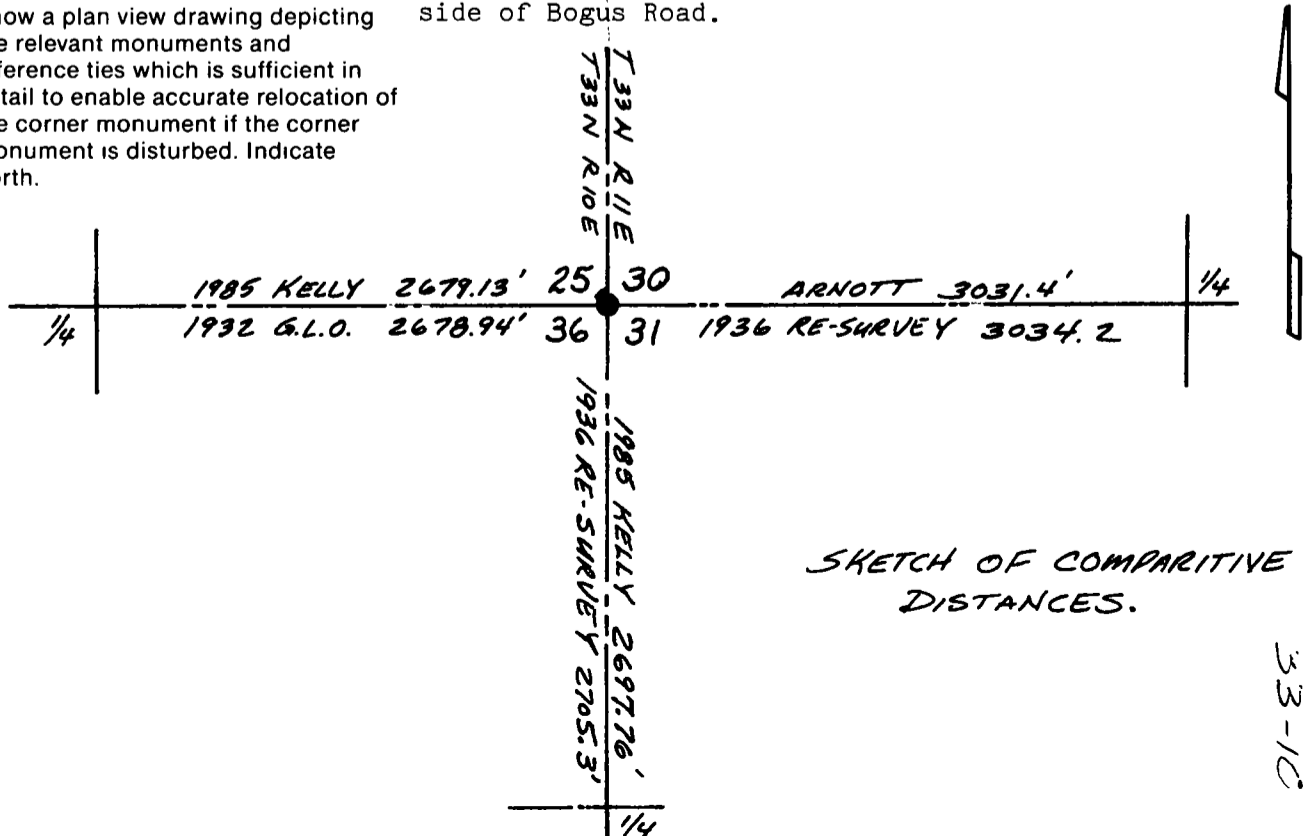
- (a) Identify the corner by reference to the U.S. public land survey system.
 O = Corner monument restored.

The Southwest corner of Section 30, Township 33 North, Range 11 East, Langlade County, WI

This form was made at the request of adjoining landowner, Gary Strasser, to verify the location of the existing corner monument.



- (b) Describe any record evidence, monument evidence, occupational evidence, testimonial evidence or any other material evidence you considered, and whether the monument was found or placed.
 The original corner was established in 1858 by Hiram C. Fellows. Original BT's: tamarac, 8", S67W, 13 lks; tamarac, 6", N56E, 8 lks; tam, 8", N06W, 24 lks, and tamarac, 8", S67E, 6 lks. In 1929, Hutchinson described this corner as "iron set by myself some years ago from orig.". The 1936 re-survey found pipe with stamped cap set by Co. Surveyor & one orig. BT (tam, 8", S63E, 3.8'). In 1985, former surveyor Kelly found monument with 3 existing BT's and marked new BT. 03/09/95 D. Tlusty found 4" pipe with cap flush with swamp. Found stump, S63E, 3.8'. Found 1936 BT fallen over - spruce, 4", S82W, 31.7'. To additionally verify position of existing monument, I find the 1936 re-survey random lines to be visible in tamarac swamp, E-W random line is 136' north of monument and N-S random line is 12' west of monument. Existing ties not checkdbut appear to be as described by Kelly.
- (c) In the plan view drawing below, provide reference ties to at least 4 witness monuments, or, if the location is within a municipality, to at least 2 witness monuments. (Witness monuments shall be made of concrete, natural stone, iron or other equally durable material.)
 Describe witness monuments.
 As shown on corner form by Kelly. Corner is on south edge of 4" x 4" tamarac post. Painted post and BT's blue.
 Corner is N45E+, approximately 330' from the SE corner of a small cabin on the West side of Bogus Road.
- (d) Show a plan view drawing depicting the relevant monuments and reference ties which is sufficient in detail to enable accurate relocation of the corner monument if the corner monument is disturbed. Indicate north.

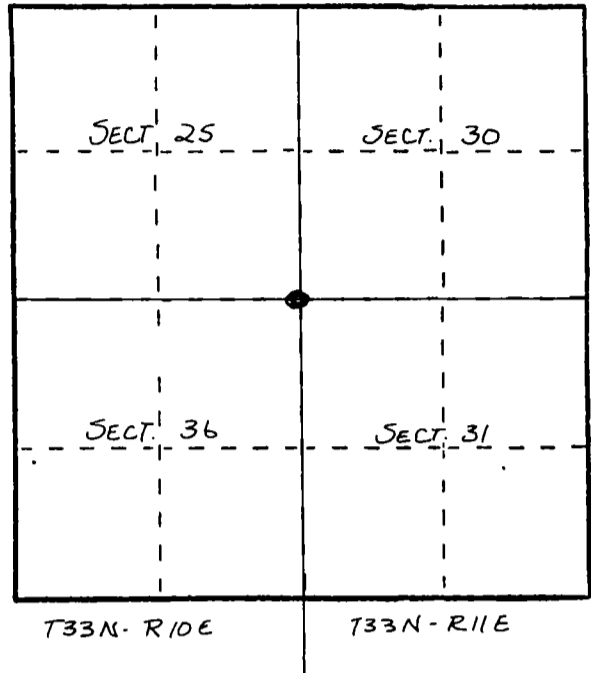


U. S. PUBLIC LAND SURVEY MONUMENT RECORD

INSTRUCTIONS: This record shall show the location of the corner and shall include all of the following nine elements (a through i).

- (a) Identify the corner by reference to the U.S. public land survey system.
 O = Corner monument restored.

ORIGINAL CORNER ESTABLISHED
 BY HIRAM C. FELLOWS IN OCT. 1860

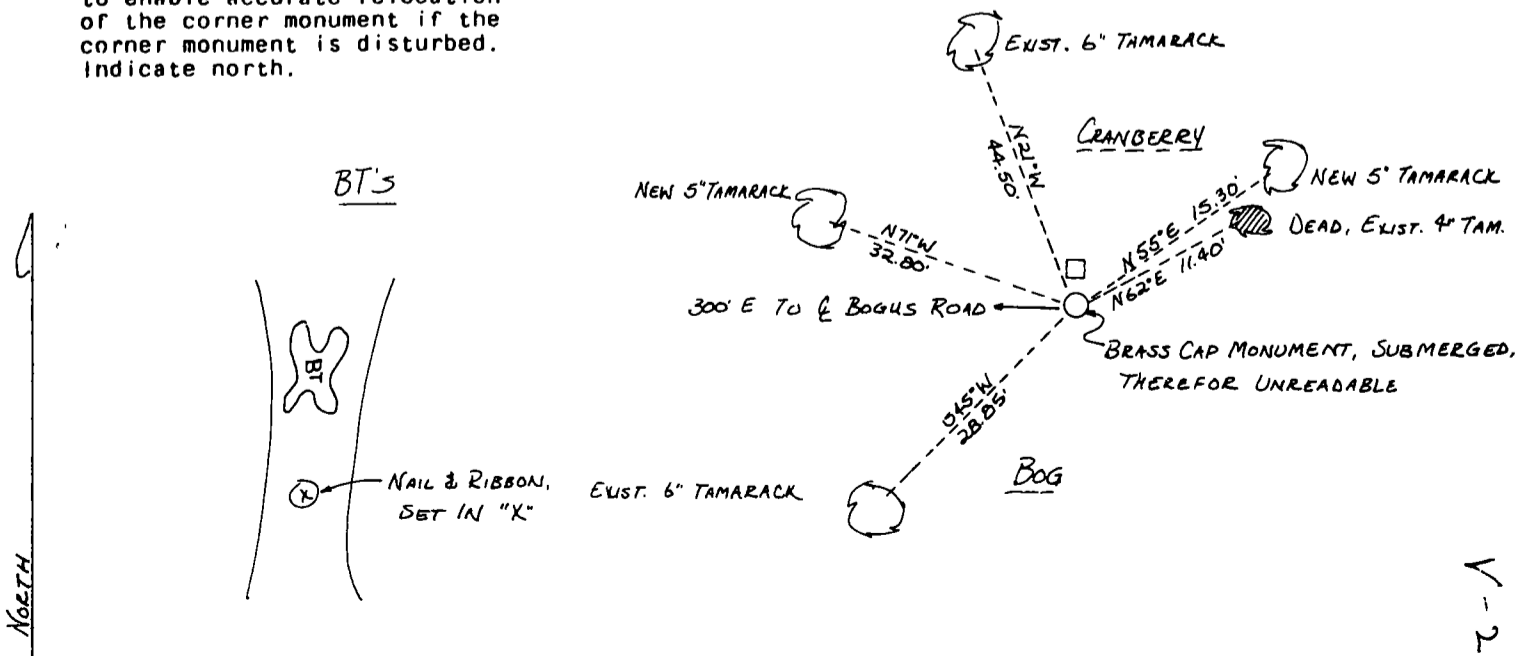


- (b) Describe any record evidence, monument evidence, occupational evidence, testimonial evidence or any other material evidence you considered, and whether the monument was found or placed.

FOUND IN PLACE: BRASS CAP MONUMENT, UNDERWATER & 3 EXISTING BT'S, 1 DEAD SET 4x4 TAMARACK POST 5' NORTH OF CORNER, SCRIBED TWO NEW BT'S

- (c) In the plan view drawing below, provide reference ties to at least 4 witness monuments, or, if the location is within a municipality, to at least 2 witness monuments. (Witness monuments shall be made of concrete, natural stone, iron or other equally durable material.) Describe witness monuments.

- (d) Show a plan view drawing depicting the relevant monuments and reference ties which is sufficient in detail to enable accurate relocation of the corner monument if the corner monument is disturbed. Indicate north.



NORTH

V-25

(e) Describe any material discrepancy between the location of the corner as restored or reestablished and the location of that corner as previously restored or reestablished by distance and direction. Show the discrepancy on the plan view drawing under (d), above. Show the distances between the corner as previously restored or reestablished and (1) the corner as restored or reestablished, and (2) to at least 2 of the witness monuments shown on the drawing in (d), above.

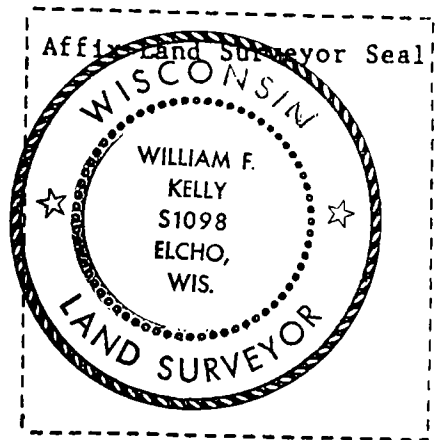
None

(f) Was the corner restored through acceptance of (1) an obliterated evidence location, or, (2) a found perpetuated location?

2

(g&h) Was the corner reestablished through lost corner proportionate methods? If so, show the method, including the directions and distances to other public land survey corners used as evidence or used for proportioning in determining the corner location?

No



(1) 1. WILLIAM F. KELLY RLS 1098 COUNTY SURVEYOR
(type or print name) certify that the corner location shown on this record was determined by me or under my direction and control and that this U.S. Public Land Survey Monument Record is correct and complete to the best of my knowledge and belief.

William F. Kelly
Signature

12-31-85
Date