

CERTIFIED LAND CORNER RESTORATION

Index No. **P-1**

33-14

State of Wisconsin }
County of Lan Lade } ss.

History of original corner establishment:

Corner set in the 1930 resurvey.

I, Raymond J. Halliey, do hereby certify that on the 7th day of April, 1979, I found evidence of the XXX 1/4 corner of Section 24 & 19 Township 33, North, Range 10E & 11E, Fourth Principal Meridian, as described hereon; and that from this evidence I established a new monument and accessories as described hereon to perpetuate the original location of this corner.

Description of corner evidence found:

4" pipe with brass cap on west edge of town road.

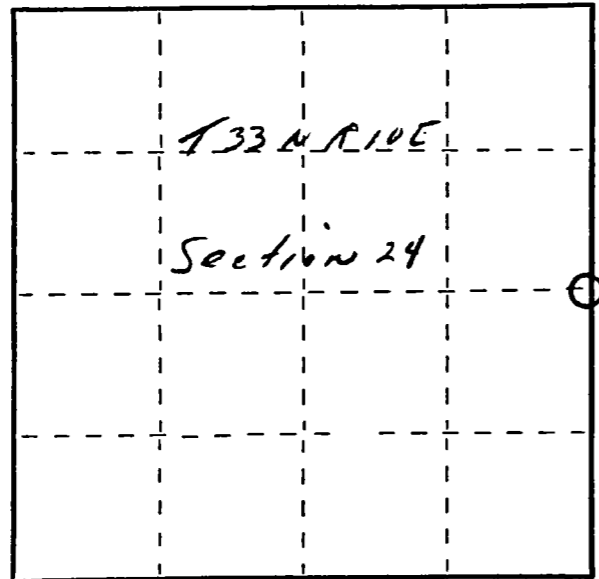
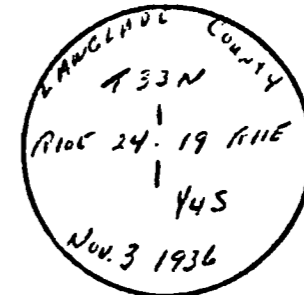
Resident witnesses:

.....
.....
.....

Description of monument and accessories I established to perpetuate the original location of this corner.

New ET's

- 10" Red Pine S67E 38.6 Ft.
- 8" Red Pine N89E 36 Ft.
- 6" White Birch N23W 3 Ft.



○ = Corner monument restored.

Dated at Antigo, Wis., this 7th day of April, 1979.

Signature Raymond J. Halliey Title Reg. Surveyor Registration No. 685
(County Surveyor, Registered Land Surveyor, or other duly authorized official)

Office of Register of Deeds, County of....., I hereby certify that the within instrument was filed in this office for record on the.....day of....., 19..... at.....o'clock..... M.

.....
(Register of Deeds)

By.....Deputy