

CERTIFIED LAND CORNER RESTORATION

33-10

Index No. R-18

State of Wisconsin }
County of Lanlade } ss.

I Raymond J. Hallisy, do hereby certify that on the 6th day of June, 19 71, I found evidence of the W 1/16 corner of Section ~~XXXXX~~ 23 & 26 Township 33, North, Range 10E, Fourth, Principal Meridian, as described hereon; and that from this evidence I established a new monument and accessories as described hereon to perpetuate the original location of this corner.

Corner set in the 1930 resurvey.

Description of corner evidence found:

Found old wood stake down, point intact. Marked S23 S26

Resident witnesses:

.....
.....
.....

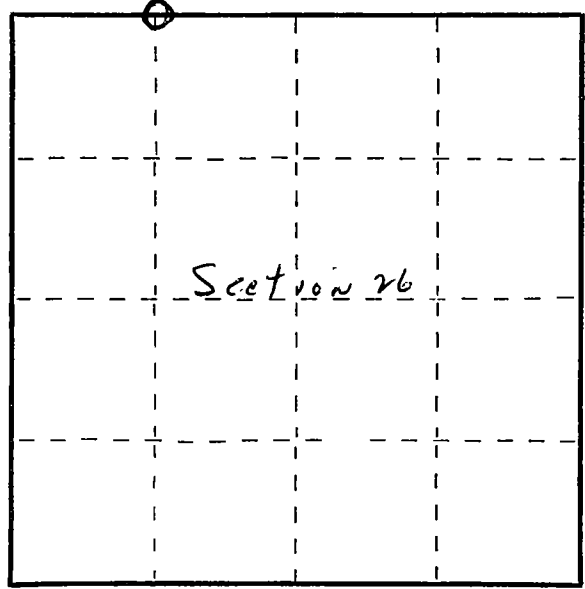
Description of monument and accessories I established to perpetuate the original location of this corner.

Set 2" pipe with brass cap.

BT'S to corner
8" Balsam S7E 6 Feet 9 inches
3" Hard Maple S47W 1 Foot 11 inches
BT's placed at base of tree and scribed BT



FORM 985 H. C. MILLER CO., MILWAUKEE



○ = Corner monument restored.

Dated at Antigo, Wis., this 6th day of June, 19 71

Signature R. J. Hallisy Title Reg. Land Surveyor Registration No. 685
(County Surveyor, Registered Land Surveyor, or other duly authorized official)

Office of Register of Deeds, County of....., I hereby certify that the within instrument was filed in this office for record on the.....day of....., 19..... at.....o'clock..... M.

.....
(Register of Deeds)

By.....Deputy