

CERTIFIED LAND CORNER RESTORATION

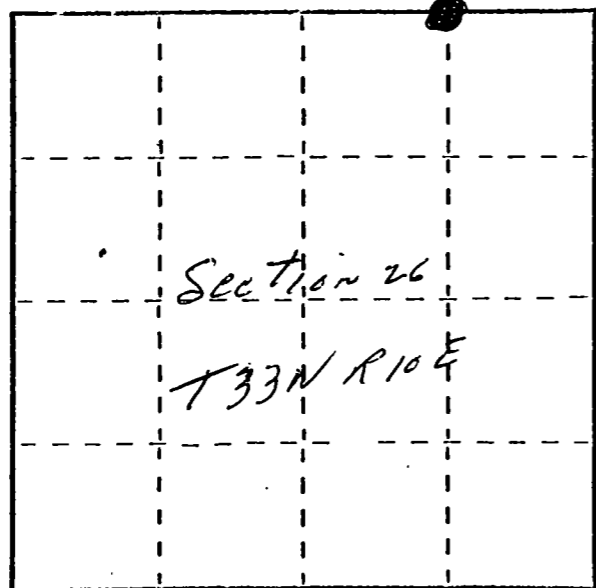
Index No. R-20

State of Wisconsin }  
County of Kenosha } ss.

I Raymond Hallisy, do hereby certify that on the 18<sup>th</sup> day of May, 1974, I found evidence of the E 1/6 corner of Section 23 & 26 Township T 33, North, Range 10 E, Fourth Principal Meridian, as described hereon; and that from this evidence I established a new monument and accessories as described hereon to perpetuate the original location of this corner.

Resident witnesses:

.....  
.....  
.....



○ = Corner monument restored.

History of original corner establishment:

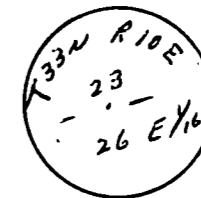
1930 Resurvey

Description of corner evidence found:

Wood post standing, marks plain, about 15' west of Bogas Rd.  
marked E 1/6 S 26 S 23

Description of monument and accessories I established to perpetuate the original location of this corner.

Set 1 1/2" iron pipe with brass cap  
Rock mound  
New BT's  
Red pipe 9" N59W 43.3 FT  
Red Maple 5" S72W 11.3 FT



Dated at Antigo, Wis., this 18<sup>th</sup> day of May, 1974.

Signature Raymond Hallisy Title Reg. Land Surveyor Registration No. 5-685  
(County Surveyor, Registered Land Surveyor, or other duly authorized official)

Office of Register of Deeds, County of \_\_\_\_\_, I hereby certify that the within instrument was filed in this office for record on the \_\_\_\_\_ day of \_\_\_\_\_, 19\_\_\_\_ at \_\_\_\_\_ o'clock \_\_\_\_\_ M.

.....  
(Register of Deeds)

By \_\_\_\_\_ Deputy