

CERTIFIED LAND CORNER RESTORATION

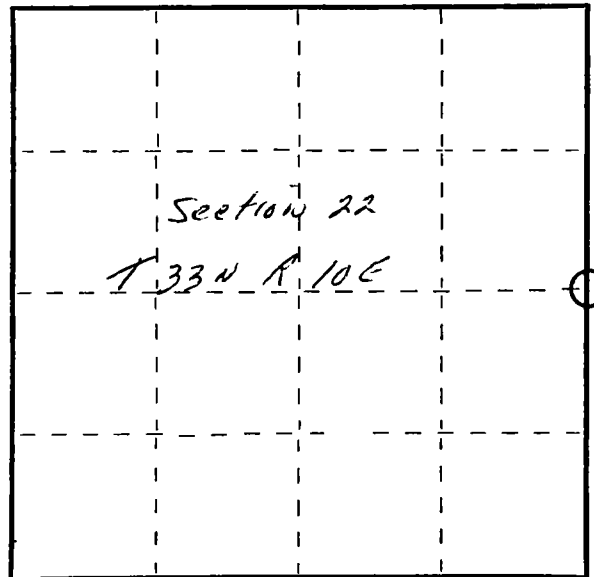
Index No. P-17

State of Wisconsin }
County of Langlade } ss.

I, Raymond J. Hallisy, do hereby certify that on the 30th day of October, 1982, I found evidence of the 1/4 corner of Section 22 & 23 Township 33 North, Range 10E, Fourth Principal Meridian, as described hereon; and that from this evidence I established a new monument and accessories as described hereon to perpetuate the original location of this corner.

Resident witnesses:

.....
.....
.....



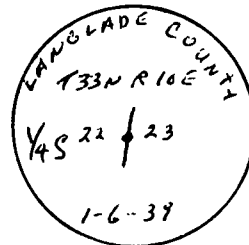
○ = Corner monument restored.

History of original corner establishment:

Corner set in the 1930 resurvey.

Description of corner evidence found:

4" iron pipe with brass cap, 6" tamarack post scribed. S45W 7.61 Links



Description of monument and accessories I established to perpetuate the original location of this corner.

New BT's

6" Spruce N22W 10.1'
5" " N88E 9.6'
5" " S40E 11.6'

Dated at Antigo, Wis., this 30th day of October, 1982.

Signature: Raymond J. Hallisy Title: Land Surveyor Registration No. S-685
(County Surveyor, Registered Land Surveyor, or other duly authorized official)

Office of Register of Deeds, County of _____, I hereby certify that the within instrument was filed in this office for record on the _____ day of _____, 19____ at _____ o'clock _____ M.

.....
(Register of Deeds)

By _____ Deputy

FORM 985 H. C. MILLER CO., MILWAUKEE