

CERTIFIED LAND CORNER RESTORATION

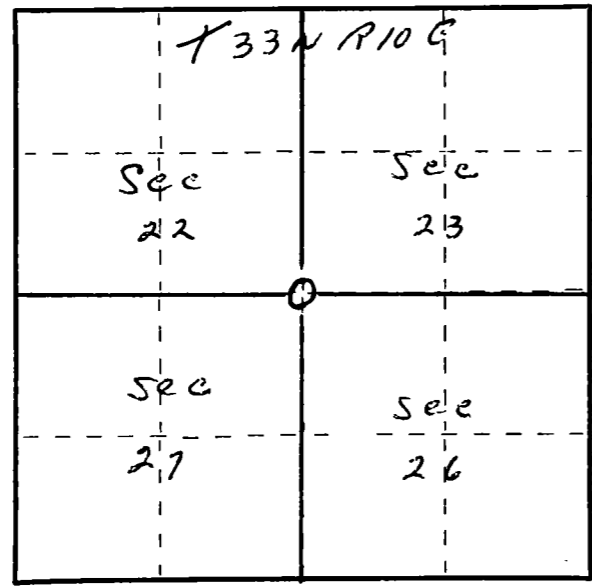
Index No. R-17
 23-10

State of Wisconsin }
 County of Lantern } ss.

I, Raymond S. Hallisy, do hereby certify that on the 2nd day of Oct, 1976, I found evidence of the Section corner of 22, 23, 26 & 27 Township 33, North, Range 10E, Fourth Principal Meridian, as described hereon; and that from this evidence I established a new monument and accessories as described hereon to perpetuate the original location of this corner.

Resident witnesses:

.....



○ = Corner monument restored.

History of original corner establishment:

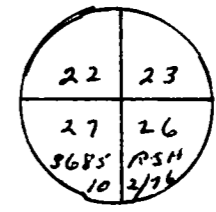
CORNER SET BY COUNTY SURVEYOR - 1930's

Description of corner evidence found:

4" GALVANIZED PIPE
BT's
16" HEMLOCK S70W 44.2 FT.
HEMLOCK STUMP N80W 44.9 FT.

Description of monument and accessories I established to perpetuate the original location of this corner.

NEW BT'S
8" ~~HEMLOCK~~ HARD MAPLE N39W 7.1 FT.
8" HARD MAPLE S50E 6.9 FT.



Dated at Antigo, Wis., this 2nd day of Oct, 1976.

Signature Raymond S. Hallisy Title Reg. Land Surveyor Registration No. 5-685
 (County Surveyor, Registered Land Surveyor, or other duly authorized official)

Office of Register of Deeds, County of _____, I hereby certify that the within instrument was filed in this office for record on the _____ day of _____, 19____ at _____ o'clock _____ M.

(Register of Deeds)

By _____ Deputy

FORM 985 M. C. MILLER CO., MILWAUKEE