

CERTIFIED LAND CORNER RESTORATION

Index No. R-10

State of Wisconsin }
County of Lancaster } ss.

History of original corner establishment:

1930 Resurvey

I Raymond Hallisy, do hereby certify that on the 17th day of August, 1974, I found evidence of the W 1/4 corner of 21 & 28 Township 33, North, Range 10E, Fourth Principal Meridian, as described hereon; and that from this evidence I established a new monument and accessories as described hereon to perpetuate the original location of this corner.

Description of corner evidence found:

Old Stake Standing in rock mound, marks bad

Resident witnesses:

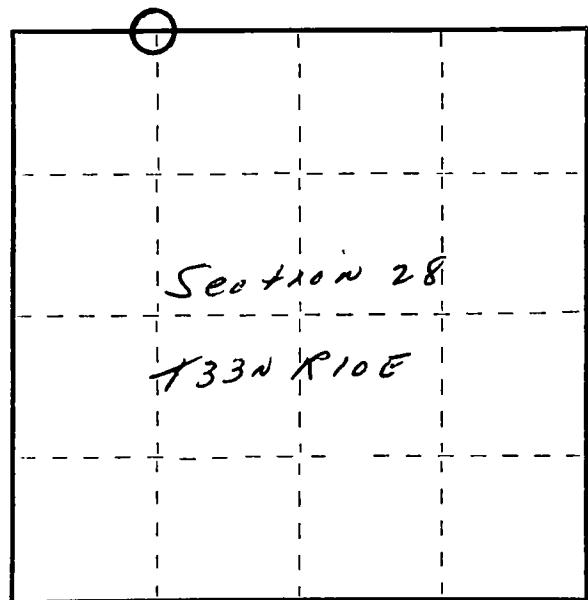
.....
.....
.....

Description of monument and accessories I established to perpetuate the original location of this corner.

Set 1 1/2" iron pipe with brass cap in rock mound

New BT's

8" Hand Maple S90E 19' 2"
8" Hand Maple N30E 6' 3"



○ = Corner monument restored.

Dated at Antigo, Wis., this 17th day of August, 1974.

Signature Raymond Hallisy Title Reg. Land Surveyor Registration No. 5685
(County Surveyor, Registered Land Surveyor, or other duly authorized official)

Office of Register of Deeds, County of....., I hereby certify that the within instrument was filed in this office for record on the..... day of....., 19..... at..... o'clock..... M.

.....
(Register of Deeds)

By..... Deputy