

CERTIFIED LAND CORNER RESTORATION

Index No. P-6

State of Wisconsin }
County of Lanai } ss.

I, Raymond J. Hallisy, do hereby certify that on the 18th day of Sept, 1976, I found evidence of the West Center V8 corner of Section 20 Township 33, North, Range 10E, Fourth Principal Meridian, as described hereon; and that from this evidence I established a new monument and accessories as described hereon to perpetuate the original location of this corner.

Resident witnesses:

.....
.....
.....

History of original corner establishment:

CORNER Set in the 1930's by Lytle - C.C.C. E.A.A
Visited by R. EGGEN & J. HASSLER, Sept 2, 1942

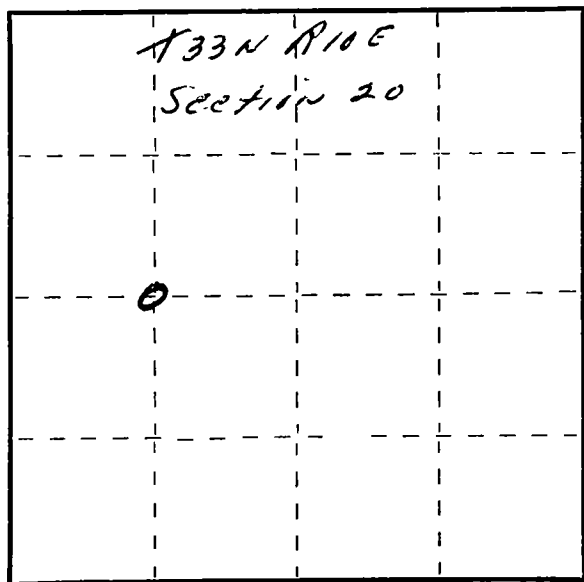
Description of corner evidence found:

Wood post down, point in ground, MARKS FAINT
Old BT's
10" cedar N84W 16.6 LKS. SCRIBED V8S
10" cedar N54E 24.5 LKS. SCRIBED V8S

Description of monument and accessories I established to perpetuate the original location of this corner.

Set NEW Cedar post SCRIBED V8

FORM 985 M. C. MILLER CO., MILWAUKEE



○ = Corner monument restored.

Dated at Antigo, Wis., this 18th day of Sept, 1976.

Signature Raymond J. Hallisy Title County Surveyor Registration No. 5-685
(County Surveyor, Registered Land Surveyor, or other duly authorized official)

Office of Register of Deeds, County of Lanai, I hereby certify that the within instrument was filed in this office for record on the 18th day of Sept, 1976 at 10 o'clock AM.

.....
(Register of Deeds)

By.....Deputy