

CERTIFIED LAND CORNER RESTORATION

Index No. R-9

State of Wisconsin }  
County of LANGLADE } ss.

I WILLIAM F. KELLY, do hereby certify that on the 29<sup>TH</sup> day of JULY, 1976, I found evidence of the SECTION corner of SECTION 20, 21, 29, & 28 Township 33, North, Range 10E, Fourth Principal Meridian, as described hereon; and that from this evidence I established a new monument and accessories as described hereon to perpetuate the original location of this corner.

Resident witnesses:

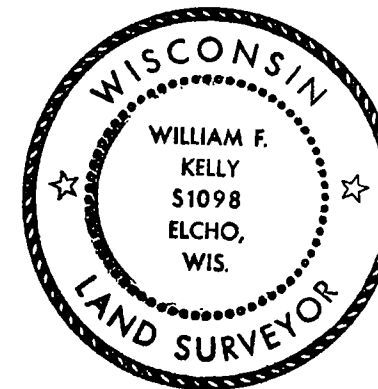
E. MISHLER

History of original corner establishment:

CAP SET IN THE 1930'S BY CCC CONTRACT

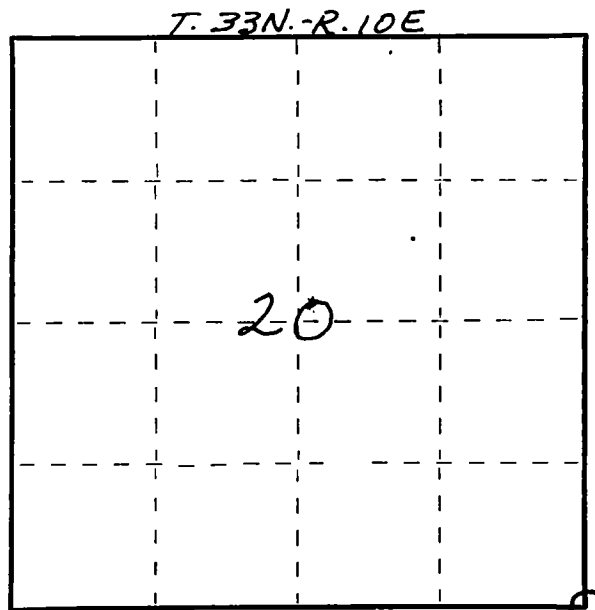
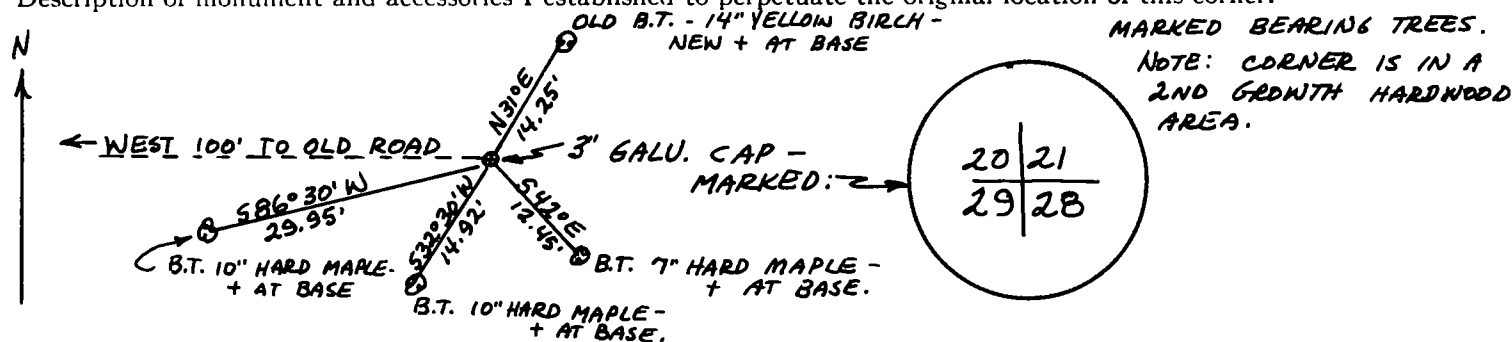
Description of corner evidence found:

3" GALVANIZED CAP.



*William F. Kelly*

Description of monument and accessories I established to perpetuate the original location of this corner.



○ = Corner monument restored.

Dated at ELCHO, Wis., this 29<sup>TH</sup> day of JULY, 1976.

Signature William F. Kelly Title REGISTERED LAND SURVEYOR Registration No. S 1098  
(County Surveyor, Registered Land Surveyor, or other duly authorized official)

Office of Register of Deeds, County of \_\_\_\_\_, I hereby certify that the within instrument was filed in this office for record on the \_\_\_\_\_ day of \_\_\_\_\_, 19\_\_\_\_ at \_\_\_\_\_ o'clock \_\_\_\_\_ M.

(Register of Deeds)

By \_\_\_\_\_ Deputy