

CERTIFIED LAND CORNER RESTORATION

Index No. R-3

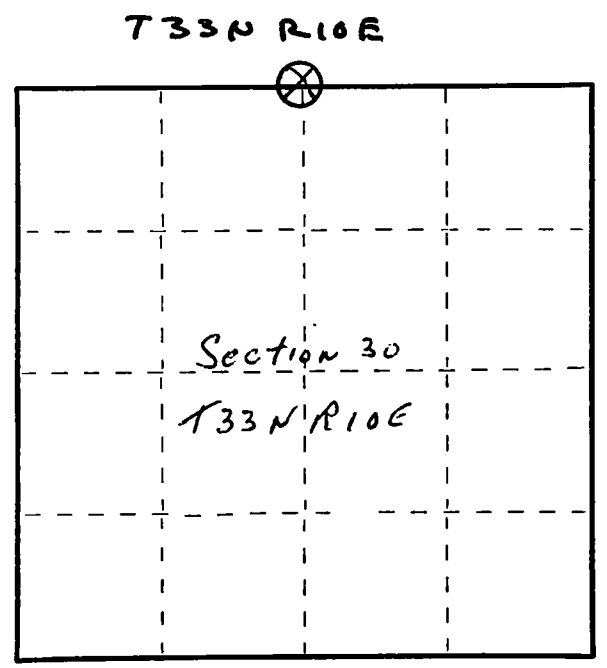
State of Wisconsin }  
County of Lanlade } ss.

I, Raymond J. Hallisy, do hereby certify that on the 12th day of October, 1980, I found evidence of the 1/4 corner of Section 19 & 30 Township 33, North, Range 10E, Fourth Principal Meridian, as described hereon; and that from this evidence I established a new monument and accessories as described hereon to perpetuate the original location of this corner.

Resident witnesses:

.....  
.....  
.....

FORM 985 M. C. MILLER CO., MILWAUKEE



○ = Corner monument restored.

History of original corner establishment:

Corner reset in Oct. 25, 1938

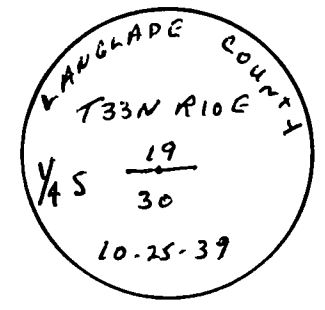
Description of corner evidence found:

4" pipe with brass cap.

Description of monument and accessories I established to perpetuate the original location of this corner.

New BT's

- 8" White Birch N62W 38 Links
- 8" White Birch S54W 17.7 Links
- 8" White Birch S4E 48 Links
- 4" Red Maple S44E 34 Links



Dated at Antigo, Wis., this 12th day of October, 1980.

Signature Raymond J. Hallisy Title Reg. Surveyor Registration No. S-685  
(County Surveyor, Registered Land Surveyor, or other duly authorized official)

Office of Register of Deeds, County of....., I hereby certify that the within instrument was filed in this office for record on the..... day of....., 19..... at..... o'clock..... M.

.....  
(Register of Deeds)

By..... Deputy