

CERTIFIED LAND CORNER RESTORATION

Index No. N-5

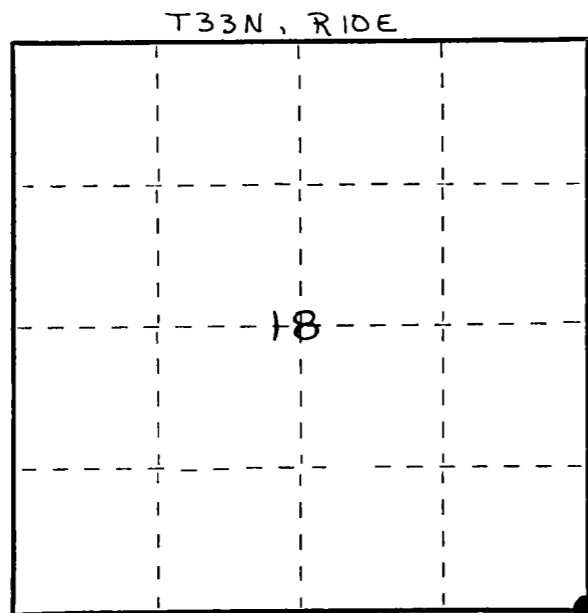
State of Wisconsin }
 County of LANGLADE } ss.

I, WILLIAM F. KELLY, do hereby certify that on the 4th day of FEBRUARY, 1901, I found evidence of the SE corner of Sec. 18 Township 33, North, Range 10 EAST, Fourth Principal Meridian, as described hereon; and that from this evidence I established a new monument and accessories as described hereon to perpetuate the original location of this corner.

Resident witnesses:

KNIGHTS TEMPLAR CLUB

FORM 985 H. C. MILLER CO., MILWAUKEE



○ = Corner monument restored.

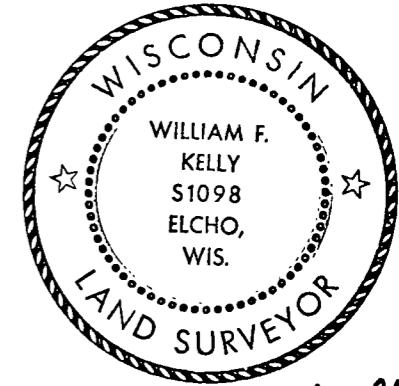
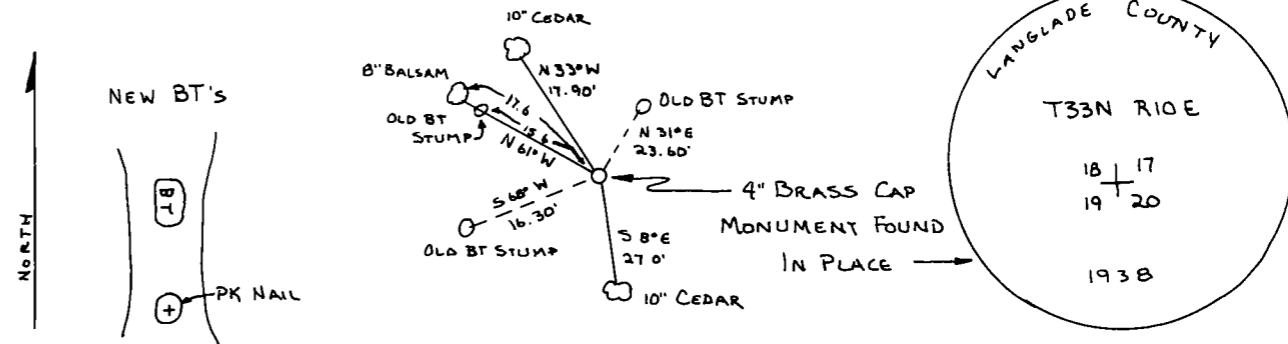
History of original corner establishment:

ORIGINAL CORNER ESTABLISHED
 BY HIRAM C. FELLOWS IN 1860

Description of corner evidence found:

4" BRASS CAP MONUMENT
 FOUND IN PLACE.
 MONUMENT WAS SET DURING
 RESURVEY OF TOWNSHIP IN 1938.
 LOCATED OLD WITNESS TREE STUMPS.
 MARKED NEW WITNESS TREES.
 MONUMENT WAS FOUND TIPPED OVER
 FROM FROST AND RESET IN UPRIGHT POSITION.

Description of monument and accessories I established to perpetuate the original location of this corner.



William F. Kelly

Dated at ELCHO, Wis., this 4th day of FEBRUARY, 1901.

Signature: William F. Kelly Title: COUNTY SURVEYOR Registration No. 1098
 (County Surveyor, Registered Land Surveyor, or other duly authorized official)

Office of Register of Deeds, County of _____, I hereby certify that the within instrument was filed in this office for record on the _____ day of _____, 19____ at _____ o'clock _____ M.

(Register of Deeds)

By _____ Deputy