

LANGLADE COUNTY U.S. PUBLIC LAND CORNER RESTORATION

The East Quarter corner of Section 17, T. 33 N., R. 10 E., Langlade County, WI.

4331017 2000

Corner was: (check all that apply)

- Restored through acceptance of an obliterated evidence location.
- Restored through acceptance of a found perpetuated location.
- Determined to be lost and re-established through proportionate methods.
Show bearings and distances to PLSS corners used for proportioning, and show original distances).
- Restored/recovered/re-established in a location that differs from a previously established position.
(Show difference in plan view below).
- Check here if addition information is shown on the reverse side of this form.

Describe record evidence, recovered physical evidence, occupational evidence, testimonial evidence and all other evidence considered in the recovery/restoration of the corner.

The original corner was established in 1860 by Hiram Fellows. Original bearing trees: hemlock, 12", S30°E, 4 links and a cedar, 9" N21°W, 7 links. In 1939, D. A. Hintze set the corner by proportion and marked BT's: cedar, 7", S 75° W, 14.4 links (9.5') and a cedar, 7", N 70° E, 13 links (8.6'). 10/30/06 D. Tlusty found 4" iron pipe with brass cap in good condition, top of monument 1.4' up. Corner is on the east side of a small swampy area, 20' from high ground to the East. I found the old SW cedar BT in good condition. I accepted the monument as found as the best evidence of the corner.

Physical description of the monument set:

For the corner, I left the existing 4" pipe with brass cap from the 1939 resurvey, in place.
Set a white vinyl sign post, 0.3' North of the corner monument.

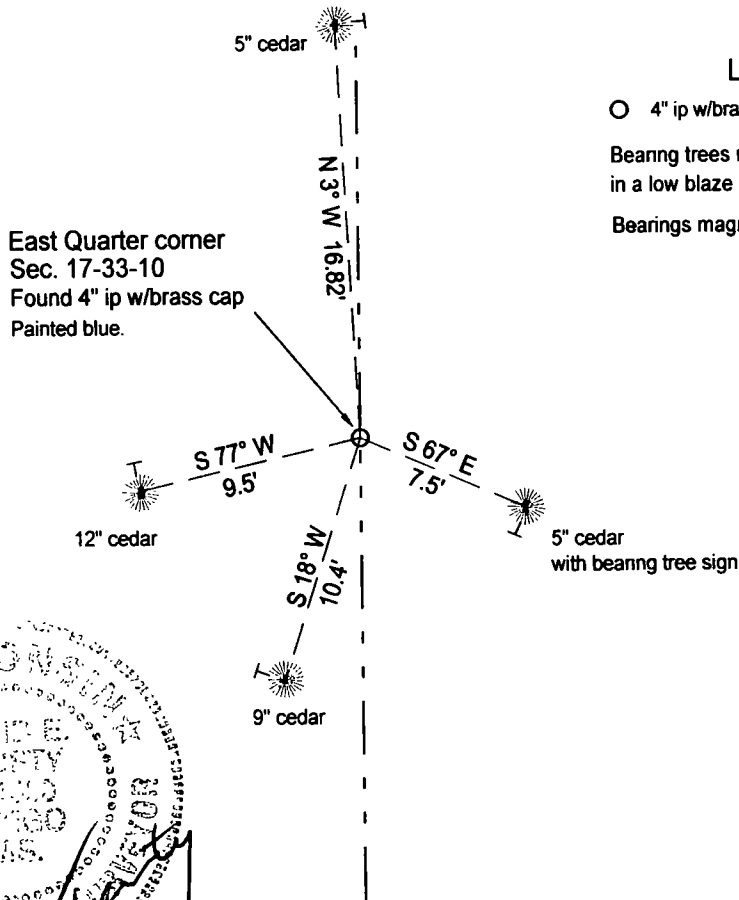
Describe the accessories used to perpetuate the corner. Include a plan view drawing and accessories found/set. Describe measuring point on bearing trees. Show any topographic features that would aid in future recovery of the corner.

Field book 22-10

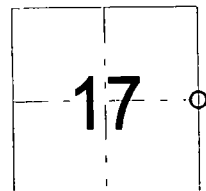


LEGEND

- 4" ip w/brass cap frnd from 1930's re-survey
- Bearing trees measured to an aluminum nail in a low blaze in the side of the tree shown: ↖
- Bearings magnetic with hand compass.



I, David E. Tlusty, Registered Land Surveyor, as Langlade County Surveyor, certify that the corner location on this record was determined by me and that this U.S. Public Land Survey Monument Record is correct to the best of my knowledge and belief.



○ = corner perpetuated
The East 1/4 corner of Section 17, T. 33 N., R. 10 E., Langlade County, WI

Index No. L9 33-10