

CERTIFIED LAND CORNER RESTORATION

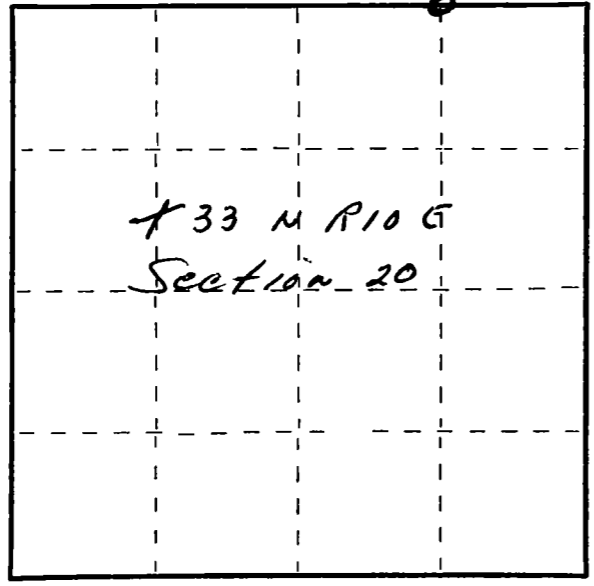
Index No. N-8

State of Wisconsin }  
County of LANGLADE } ss.

I, Raymond J. Hallisy, do hereby certify that on the 4th day of Sept, 1976, I found evidence of the E 1/6 corner of Section 17 & 20 Township 33, North, Range 10E, Fourth Principal Meridian, as described hereon; and that from this evidence I established a new monument and accessories as described hereon to perpetuate the original location of this corner.

Resident witnesses:  
.....  
.....  
.....

FORM 985 H. C. MILLER CO., MILWAUKEE



○ = Corner monument restored.

History of original corner establishment:

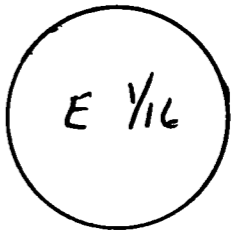
CORNER Set in The 1930 RESURVEY

Description of corner evidence found:

CEDAR STAKE MARKED E 1/6, ROCK MOUND

Description of monument and accessories I established to perpetuate the original location of this corner.

SET 1 1/2" IRON PIPE WITH BRASS CAP  
NEW BT'S  
12" YELLOW BIRCH S28E 10'8"  
11" HARD MAPLE N25W 27'9"



Dated at Antigo, Wis., this 4th day of Sept, 1976.

Signature Raymond J. Hallisy Title Reg. Land Surveyor Registration No. 5685  
(County Surveyor, Registered Land Surveyor, or other duly authorized official)

Office of Register of Deeds, County of....., I hereby certify that the within instrument was filed in this office for record on the..... day of....., 19..... at..... o'clock..... M.

.....  
(Register of Deeds)

By..... Deputy