

4331015 2000

U S PUBLIC LAND SURVEY MONUMENT RECORD

NOTE: This form is intended and designed to fulfill all requirements of Wisconsin Administrative Code, Chapter A-E 7.08 U.S. Public Land Survey Monument Record (3) (a-i)

(a) CORNER LOCATION
WEST 1/4 CORNER OF SECTION 15
TOWNSHIP 33 NORTH
RANGE 10 EAST OF THE 4TH PM
TOWN OF UPHAM
COUNTY OF LANGLADE

WISCRS - LANGLADE COUNTY
N: 413613.255 USft
E: 603377.043 USft
Datum: NAD83 (2011)
GNSS Method RTN - Direct
GNSS Control WISCRS VRS



(b) HISTORY OF ORIGINAL CORNER ESTABLISHMENT

| | | |
|-------------------------------------|-----------------------------|--|
| Original Surveyor: Hiram C. Fellows | Original Accessories: | Set quarter Section & Meander Post Maple 16 N67E 19 Links |
| Date of Survey | Commenced: October 6, 1860 | Hemlock 10 S10W 5 Links |
| | Completed: October 18, 1860 | See previous USPLS Monument Record INDEX NO. L-7 |

(f)(g)(h) Description of monument found at this corner and if it was accepted, state all evidence (material, testimonial, occupational, plats, records, other monuments) used as a basis for accepting. If not accepted or if nothing was found, state evidence used as basis for establishing location. If re-established through lost corner proportionate methods, indicate all monuments, distances and directions used to establish. Indicate type of monument and sign post found or set.

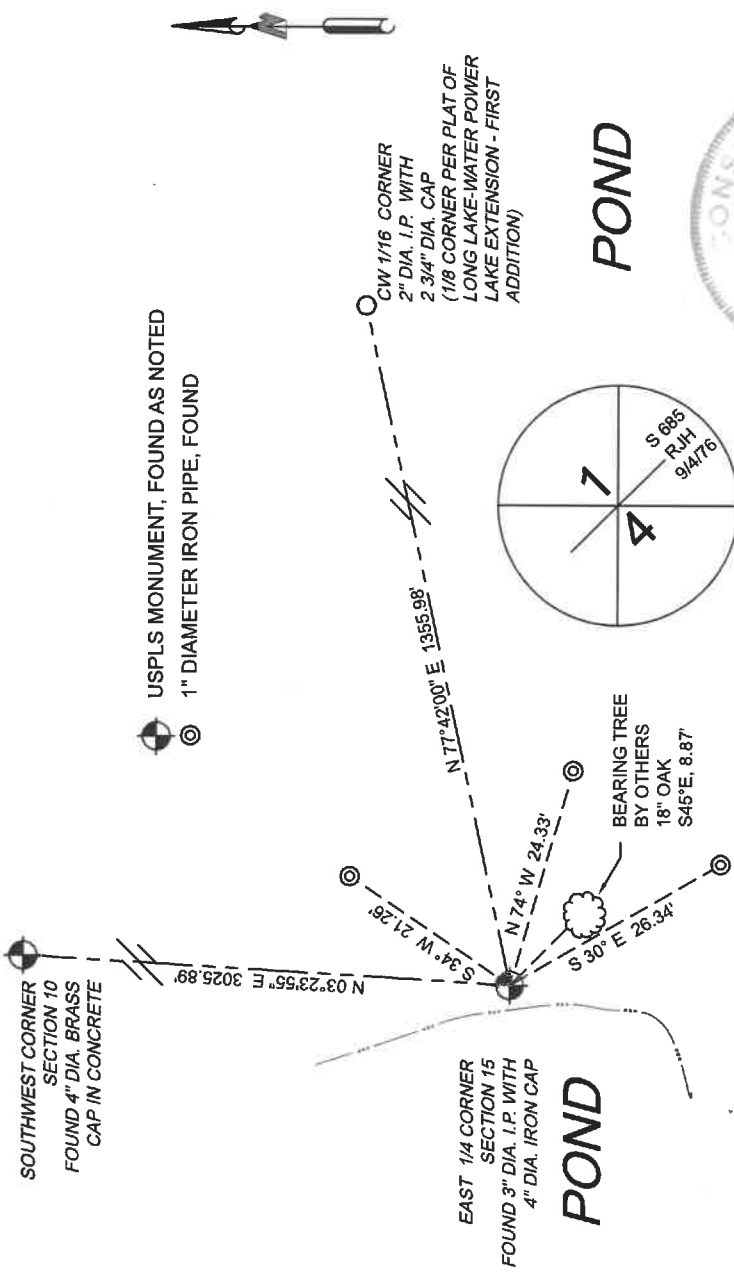
SEPTEMBER 4, 1976 - SURVEYOR 685 - RAYMOND J. HALLISEY INDICATES: "CORNER SET BY THE COUNTY SURVEYOR IN THE 1930'S
FOUND A 4" GALVANIZED PIPE WITH CAP, AND MADE NEW BT'S
7" OAK N41E 11'7"
9" OAK S14E 17'
12" REDMAPLE S54E 9'

AUGUST 27, 1992 - SURVEYOR 1935 - DANIEL E. HIGGINBOTHAM FOUND AND PERPETUATED A 4" IRON PIPE WITH CAP AS CALLED FOR BY R. HALLISEY.

AUGUST 10, 2021 - I FOUND A 3" DIAMETER IRON PIPE WITH A 4" DIAMETER CAP, AND ALL OF HIGGINBOTHAM'S WITNESSES, AND ACCEPTED THE POSITION AS THE CORNER. I MADE OR VERIFIED WITNESSES AS SHOWN BELOW.

The coordinate value shown has been verified by at least one of the following methods: 1) comparison to a previously GPS determined published value, 2) the value is the average of two or more GPS observations at a markedly different time; ~~3) one or more distances were measured back to the GPS-observed corner from temporary GPS-observed offset locations:~~

(c)(d)(e) Plan view of corner with ties to at least 4 witness monuments. If in disagreement with previously established corner, show the distances between the two corners and also indicate the ties to the disputed.



L17 33-10

(i) I, Jeffrey L. DeMuth, Professional Land Surveyor No. S-2656, hereby certify that the corner location on this record was determined by me or under my direction and control and that this U.S. Public Land Survey Monument Record is correct and complete to the best of my knowledge, and belief

Jeffrey L. DeMuth
SIGNATURE

AUGUST 19, 2021
DATE



U. S. PUBLIC LAND SURVEY MONUMENT RECORD

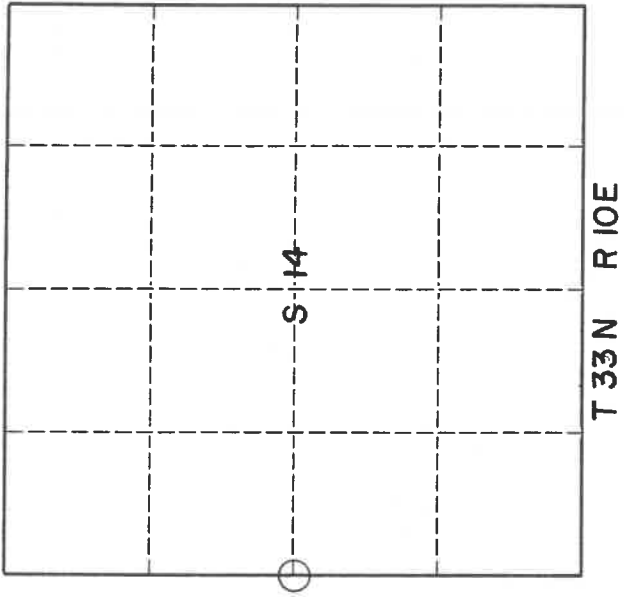
I N S T R U C T I O N S:

This record shall show the location of the corner and shall include all of the following nine elements (a through i).

- (a) Identify the corner by reference to the U.S. public land survey system.
- O = Corner monument restored.

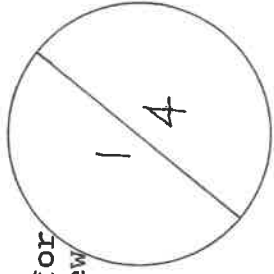
Original Survey completed by Hiram C. Fellows, 1860

**Dan Higginbotham
Mark Nelson
Witnesses**

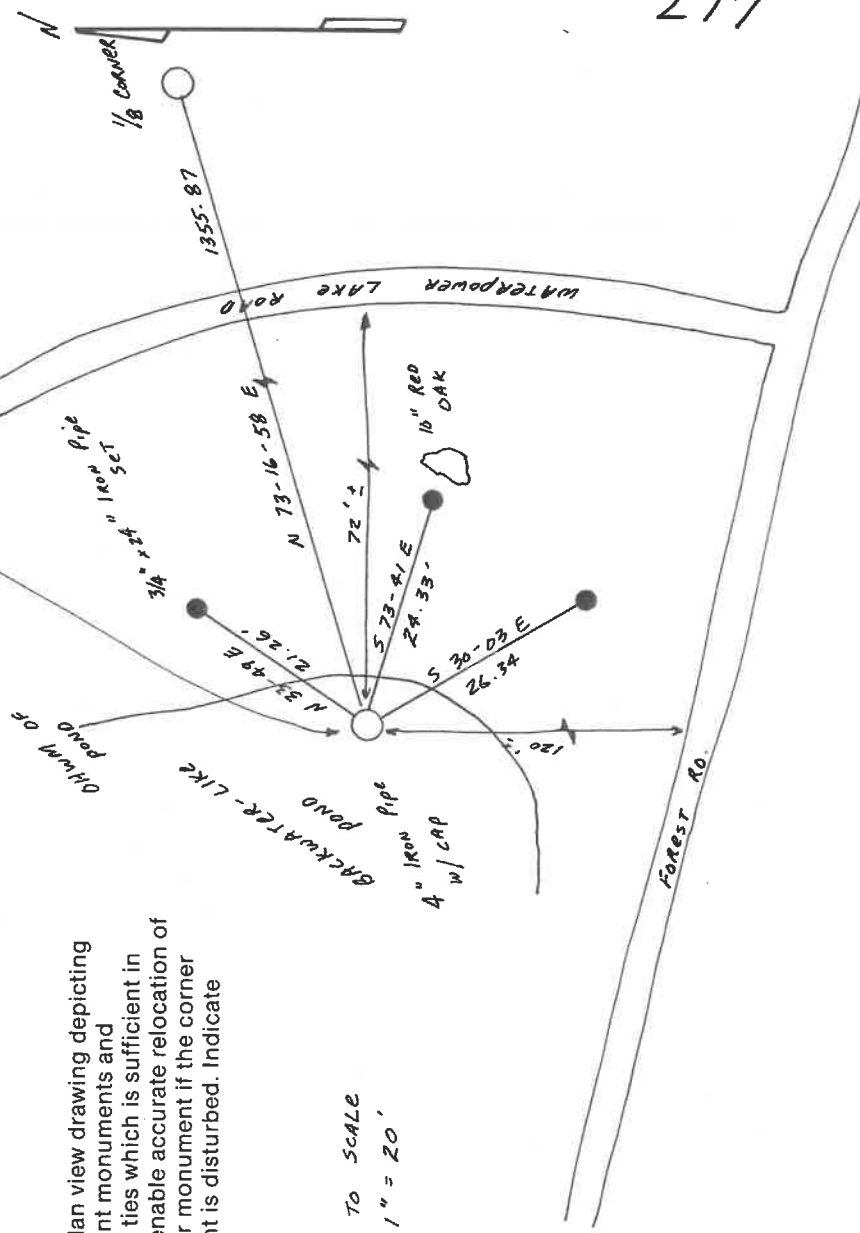


- (b) Describe any record evidence, monument evidence, occupational evidence, testimonial evidence or any other material evidence you considered, and whether the monument was found or placed.

I found a 4" iron pipe with cap as called for by R. Hallisey. I re-tied and created a new monument record to aid in future corner reconnaissance.



- (c) In the plan view drawing below, provide reference ties to at least 4 witness monuments, or, if the location is within a municipality, to at least 2 witness monuments. (Witness monuments shall be made of concrete, natural stone, iron or other equally durable material.) Describe witness monuments.



- (d) Show a plan view drawing depicting the relevant monuments and reference ties which is sufficient in detail to enable accurate relocation of the corner monument if the corner monument is disturbed. Indicate north.

TIES ARE TO SCALE
SCALE: 1" = 20'

Describe any material discrepancy between the location of the corner as restored or reestablished and the location of that corner as previously restored or reestablished by distance and direction. Show the discrepancy on the plan view drawing under (d), above. Show the distances between the corner as previously restored or reestablished and (1) the corner as restored or reestablished, and (2) to at least 2 of the witness monuments shown on the drawing in (d), above.

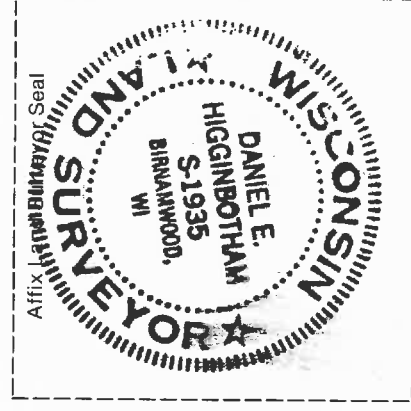
None.

- (f) Was the corner restored through acceptance of (1) an obliterated evidence location, or, (2) a found perpetuated location.?

2. A found perpetuated location.

- (g & h) Was the corner reestablished through lost corner proportionate methods? If so, show the method, including the directions and distances to other public land survey corners used as evidence or used for proportioning in determining the corner location.

No.



(i) I, Daniel E. Higginbotham

(type or print name)

certify that the corner location shown on this record was determined by me or under my direction and control and that this U.S. Public Land Survey Monument Record is correct and complete to the best of my knowledge and belief.

Dan Higginbotham
Signature

August 27, 1992
Date

CERTIFIED LAND CORNER RESTORATION

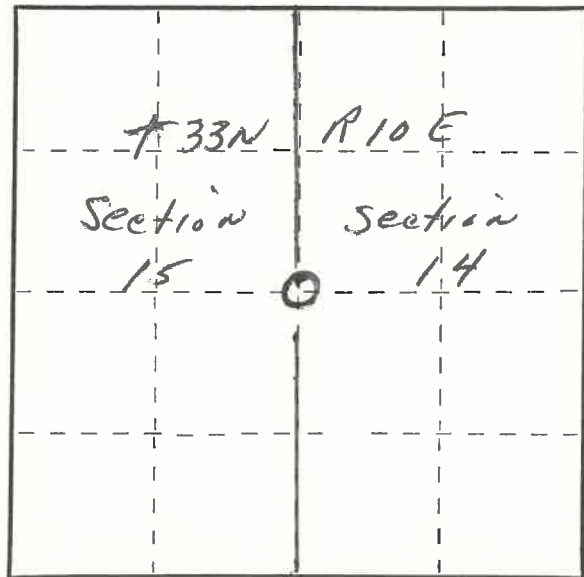
Index No. L-17

State of Wisconsin }
County of Langlade } ss.

I Raymond S. Hallisy, do hereby certify that on the 4th day of Sept., 19 76, I found evidence of the 4th corner of Section 14 & 15 Township 33, North, Range 10E, Fourth Principal Meridian, as described hereon; and that from this evidence I established a new monument and accessories as described hereon to perpetuate the original location of this corner.

Resident witnesses:

.....
.....
.....



○ = Corner monument restored.

History of original corner establishment:

CORNER SET BY THE COUNTY SURVEYOR IN THE 1930's

Description of corner evidence found:

4" GALVANIZED PIPE WITH CAP

Description of monument and accessories I established to perpetuate the original location of this corner.

NEW BT'S

7" OAK N41E 11'7"
9" OAK S14E 17'
12 RED MAPLE S54E 8'



Dated at Antigo, Wis., this 4th day of Sept., 19 76

Signature Raymond S. Hallisy Title Reg. Land Surveyor Registration No. 5685
(County Surveyor, Registered Land Surveyor, or other duly authorized official)

Office of Register of Deeds, County of....., I hereby certify that the within instrument was filed in this office for record on the..... day of....., 19..... at..... o'clock..... M.

.....
(Register of Deeds)

By..... Deputy

FORM 985 H. C. MILLER CO., MILWAUKEE