

CERTIFIED LAND CORNER RESTORATION

Index No. N-15

State of Wisconsin }
County of Langlade } ss.

I, Raymond S. Hallisy, do hereby certify that on the 2nd day of Oct, 1976, I found evidence of the Y4 corner of Section 15 & 22 Township 33, North, Range 10E, Fourth Principal Meridian, as described hereon; and that from this evidence I established a new monument and accessories as described hereon to perpetuate the original location of this corner.

Resident witnesses:

.....
.....
.....

History of original corner establishment:

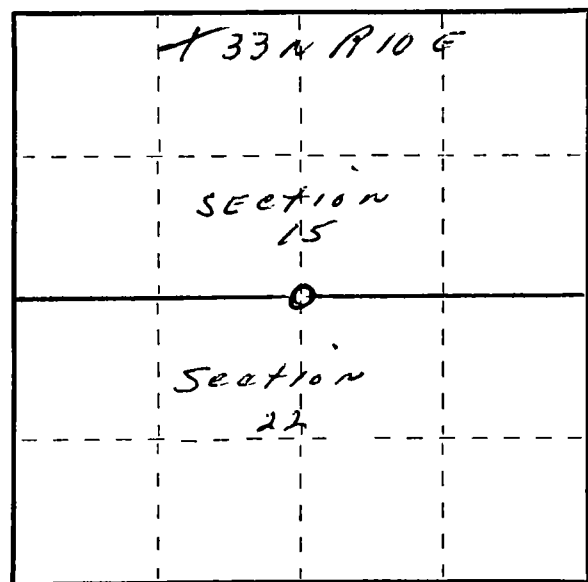
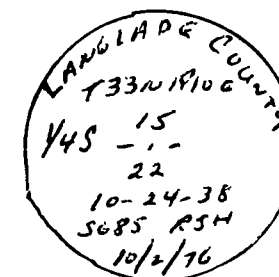
CORNER SET IN THE 1930 RESURVEY

Description of corner evidence found:

4" IRON PIPE WITH BRASS CAP
24" HEMLOCK SB1W 9.2 LKS
8" TAMARACK SNAG N72E 51.7 LKS

Description of monument and accessories I established to perpetuate the original location of this corner.

NEW BT'S
10" HEMLOCK N20E 25.6 FT
7" HEMLOCK N42W 23.2 FT



○ = Corner monument restored.

Dated at Antigo, Wis., this 2nd day of Oct, 1976.

Signature Raymond S. Hallisy Title Reg. Land Surveyor Registration No. 5685
(County Surveyor, Registered Land Surveyor, or other duly authorized official)

Office of Register of Deeds, County of _____, I hereby certify that the within instrument was filed in this office for record on the _____ day of _____, 19____ at _____ o'clock _____ M.

.....
(Register of Deeds)

By _____ Deputy