

LANGLADE COUNTY U.S. PUBLIC LAND CORNER RESTORATION

The Southeast corner of Section 15, T. 33 N., R. 10 E., Langlade County, WI.

Corner was: (check all that apply)

4331015 0000

- Restored through acceptance of an obliterated evidence location.
- Restored through acceptance of a found perpetuated location.
- Determined to be lost and re-established through proportionate methods.
Show bearings and distances to PLSS corners used for proportioning, and show original distances).
- Restored/recovered/re-established in a location that differs from a previously established position.
(Show difference in plan view below)
- Check here if addition information is shown on the reverse side of this form.

Describe record evidence, recovered physical evidence, occupational evidence, testimonial evidence and all other evidence considered in the recovery/restoration of the corner.

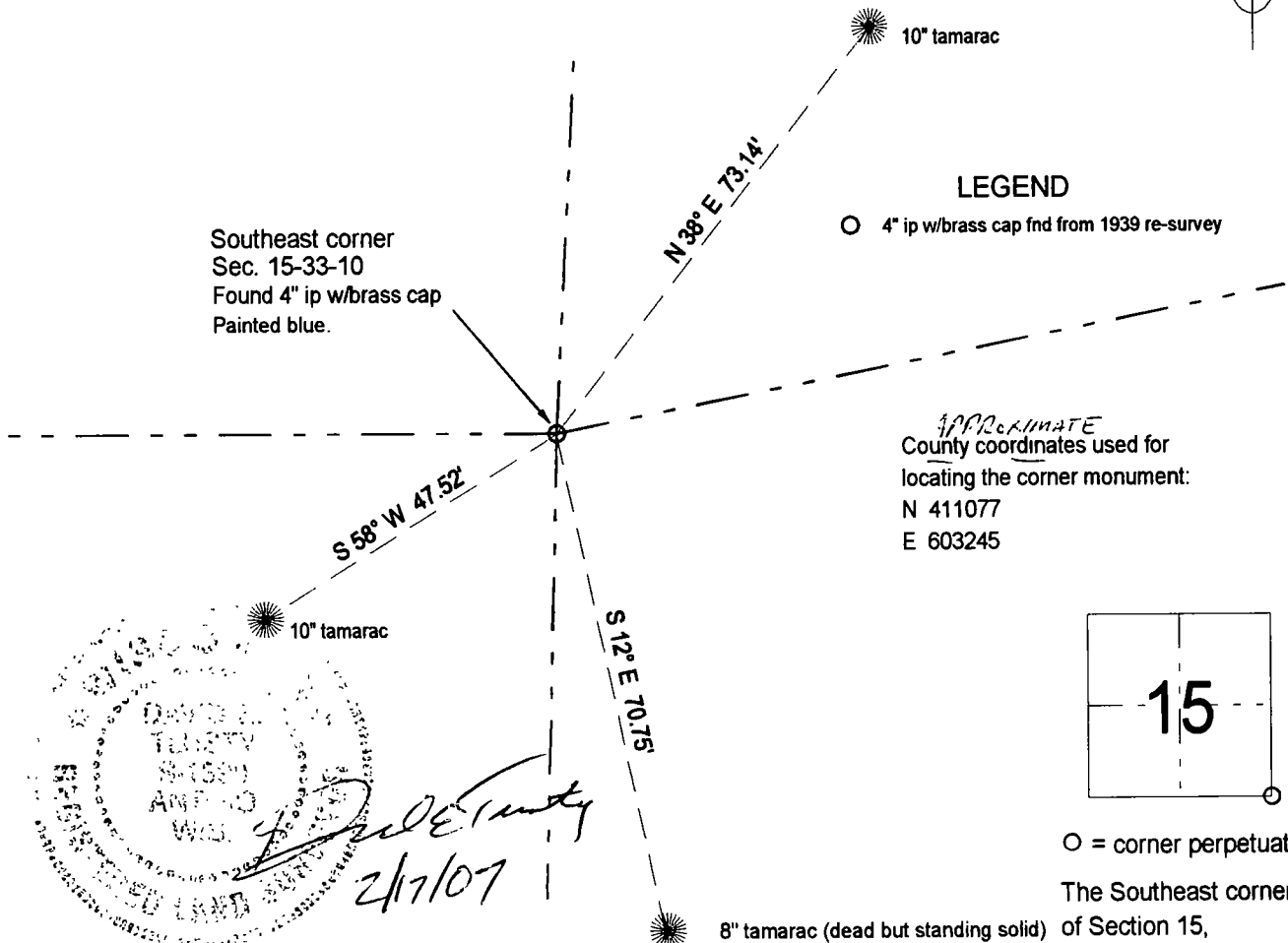
The original corner was established in 1860 by Hiram Fellows. Original bearing trees; tamarac, 6", N39°W, 30 links and a tamarac, 10", S65°E, 9 links. In 1939, Darwin Hintz re-established this corner by proportionate methods. He set a 4" iron pipe with brass cap and marked 3 - 8" tamarac bearing trees. On February 15, 2007 Dave Tlusty and Tim Rusch found the 1939 monument in good condition at the base of a short 2" dia. tamarac. We also found the 3 1939 bearing trees. Accepted the monument found as the best evidence of the corner. Note: The 3 trees marked in 1939 were most likely the best trees in the area and they still are. No other trees were marked at this time.

Set a white vinyl sign post within 0.5' of the corner monument.

Physical description of the monument set:

For the corner, I left the existing 4" pipe with brass cap from the 1939 resurvey, in place. The existing monument is in excellent condition. The 1939 measurements are shown on the sketch below. We nailed Bearing Tress signs to the existing BT and painted them blue. Set a white vinyl sign post within 0.5' of the corner monument.

Describe the accessories used to perpetuate the corner. Include a plan view drawing and accessories found/set. Describe measuring point on bearing trees. Show any topographic features that would aid in future recovery of the corner.



David E. Tlusty
2/17/07

I, David E. Tlusty, Registered Land Surveyor, as Langlade County Surveyor, certify that the corner location on this record was determined by me and that this U S Public Land Survey Monument Record is correct to the best of my knowledge and belief

○ = corner perpetuated
The Southeast corner of Section 15, T. 33 N., R. 10 E., Langlade County, WI

Index No. N17 33-10