

CERTIFIED LAND CORNER RESTORATION

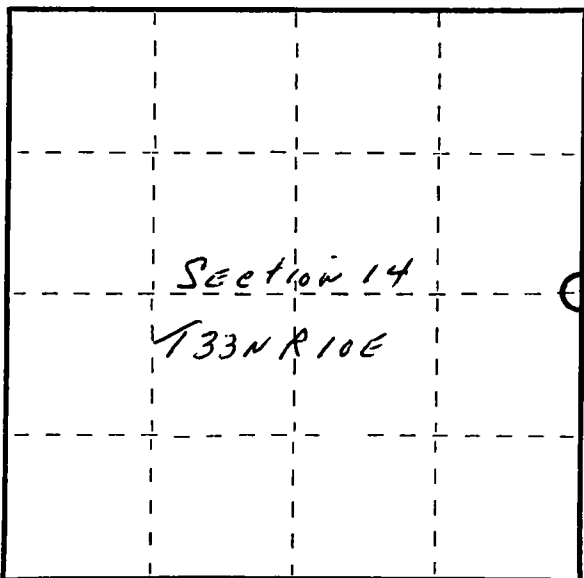
Index No. L-21

State of Wisconsin }  
County of Langlade } ss.

I, Raymond J. Hallisy, do hereby certify that on the 4th day of April, 1981, I found evidence of the 1/4 corner of Section 13 & 14 Township 33, North, Range 10E, Fourth Principal Meridian, as described hereon; and that from this evidence I established a new monument and accessories as described hereon to perpetuate the original location of this corner.

Resident witnesses:

.....  
.....  
.....



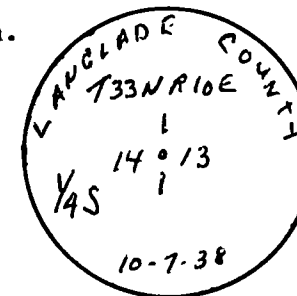
○ = Corner monument restored.

History of original corner establishment:

Corner set in the 1930 resurvey.

Description of corner evidence found:

4" iron pipe with brass cap in a open marsh.



Description of monument and accessories I established to perpetuate the original location of this corner.

New BT's

- 10" Red Pine N19E 83'10"
- 11" White Pine N48E 83'2"
- 7" Red Pine N75E 95'3"

Dated at Antigo, Wis., this 4th day of ~~XXXX~~ April, 1981

Signature, Raymond J. Hallisy Title Reg. Land Surveyor Registration No. S-685  
(County Surveyor, Registered Land Surveyor, or other duly authorized official)

Office of Register of Deeds, County of \_\_\_\_\_, I hereby certify that the within instrument was filed in this office for record on the \_\_\_\_\_ day of \_\_\_\_\_, 19\_\_\_\_ at \_\_\_\_\_ o'clock \_\_\_\_\_ M.

.....  
(Register of Deeds)

By \_\_\_\_\_ Deputy

FORM 985 R. C. MILLER CO., MILWAUKEE