

CERTIFIED LAND CORNER RESTORATION

Index No. N-21

33-10

State of Wisconsin }
County of Langlade } ss.

I Raymond J. Hallisy, do hereby certify that on the 3rd day of June, 19 78, I found evidence of the Section corner of 13, 14, 23, & 24 Township 33, North, Range 10E, Fourth Principal Meridian, as described hereon; and that from this evidence I established a new monument and accessories as described hereon to perpetuate the original location of this corner.

Resident witnesses:

.....
.....
.....

History of original corner establishment:

Corner set in the 1930 resurvey.

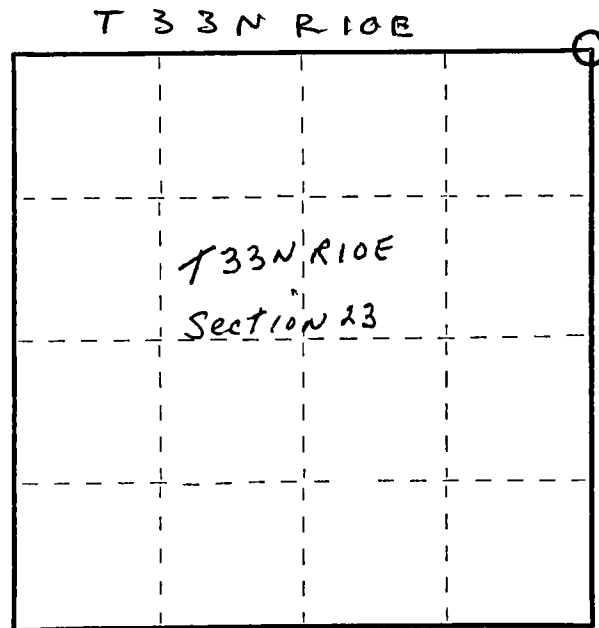
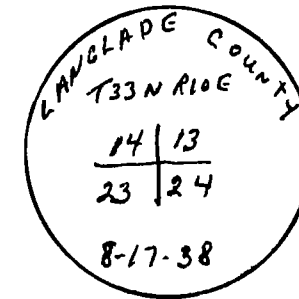
Description of corner evidence found:

4" iron pipe with brass cap.

Description of monument and accessories I established to perpetuate the original location of this corner.

New BT's

7"	Hard Maple	N50E	10' 5"
5"	Hard Maple	S55W	31' 2"
10"	White Birch	S9W	12' 1"



○ = Corner monument restored.

Dated at Antigo, Wis., this 3rd day of June, 19 78

Signature Raymond J. Hallisy Title Land Surveyor Registration No. S-685
(County Surveyor, Registered Land Surveyor, or other duly authorized official)

Office of Register of Deeds, County of Langlade, I hereby certify that the within instrument was filed in this office for record on the 14 day of June, 19 78 at 10 o'clock AM.

.....
(Register of Deeds)

By..... Deputy

FORM 985 H. C. MILLER CO., MILWAUKEE

2/15/07 D. TILUSTY
END MOW GOOD COND.
NEEDS NEW BT'S -
ALL EXISTING ARE SAWED OFF.