

CERTIFIED LAND CORNER RESTORATION

Index No. N-23

53-10

State of Wisconsin }
County of LANGLADE } ss.

I, Raymond S. Hailisy, do hereby certify that on the 2nd day of Oct, 1976, I found evidence of the 1/4 corner of Section 13 & 24 Township 33, North, Range 10E, Fourth Principal Meridian, as described hereon; and that from this evidence I established a new monument and accessories as described hereon to perpetuate the original location of this corner.

Resident witnesses:

.....
.....
.....

History of original corner establishment:

CORNER SET IN THE 1930 RESURVEY

Description of corner evidence found:

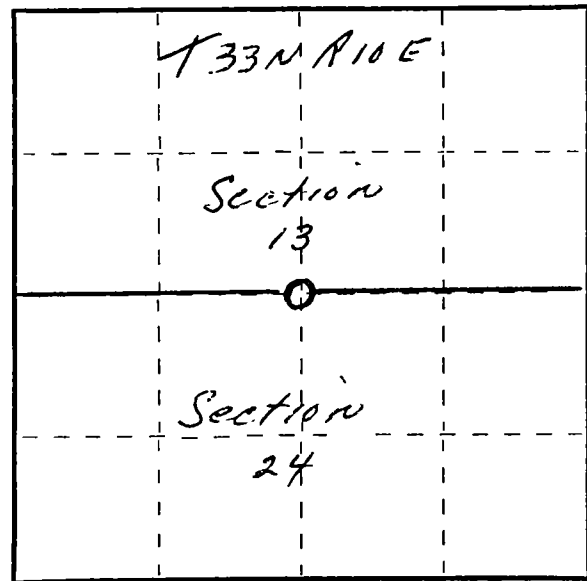
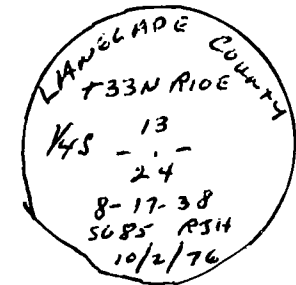
4" IRON PIPE WITH BRASS CAP

Description of monument and accessories I established to perpetuate the original location of this corner.

NEW BT'S

8" BASSWOOD N44E 8.2 FT.

4" HARD MAPLE S71W 10.5 FT.



○ = Corner monument restored.

Dated at Antigo, Wis., this 2nd day of Oct., 1976.

Signature Raymond S. Hailisy Title Reg. Land Surveyor Registration No. 5-685
(County Surveyor, Registered Land Surveyor, or other duly authorized official)

Office of Register of Deeds, County of Langlade, I hereby certify that the within instrument was filed in this office for record on the 10/2/76 day of October, 1976 at 10:20 o'clock AM.

.....
(Register of Deeds)

By..... Deputy