

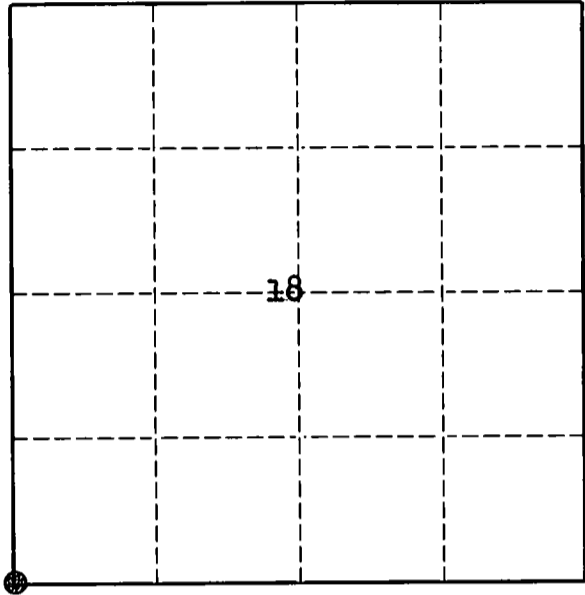
U. S. PUBLIC LAND SURVEY MONUMENT RECORD

INSTRUCTIONS:

This record shall show the location of the corner and shall include all of the following nine elements (a through i).

- (a) Identify the corner by reference to the U.S. public land survey system.
 O = Corner monument restored.

Section Corner 13, 18, 19 & 24
 T33N, R10-11E

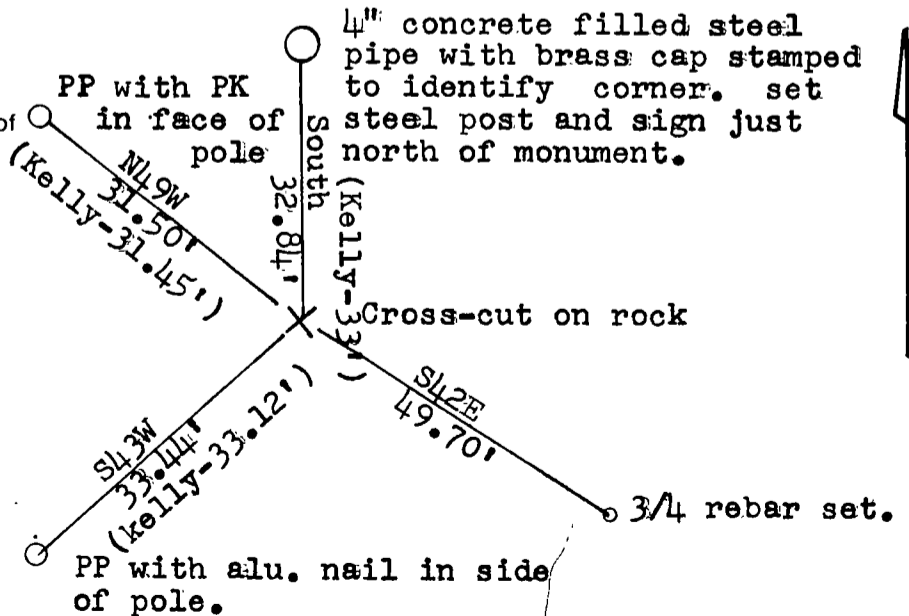


- (b) Describe any record evidence, monument evidence, occupational evidence, testimonial evidence or any other material evidence you considered, and whether the monument was found or placed.

Found a RR spike set by Kelly, but it was found to be in the wrong place. We did find a cross-cut on a stone near Kelly's RR spike. I removed the RR spike and found an iron below the stone. We did not remove the stone to dig for the iron. The cross-cut and the iron was set by the CCC crew in the 1930's.

- (c) In the plan view drawing below, provide reference ties to at least 4 witness monuments, or, if the location is within a municipality, to at least 2 witness monuments. (Witness monuments shall be made of concrete, natural stone, iron or other equally durable material.) Describe witness monuments.

- (d) Show a plan view drawing depicting the relevant monuments and reference ties which is sufficient in detail to enable accurate relocation of the corner monument if the corner monument is disturbed. Indicate north



N

Describe any material discrepancy between the location of the corner as restored or reestablished and the location of that corner as previously restored or reestablished by distance and direction. Show the discrepancy on the plan view drawing under (d), above. Show the distances between the corner as previously restored or reestablished and (1) the corner as restored or reestablished, and (2) to at least 2 of the witness monuments shown on the drawing in (d), above.

Kelly's RR spike was 0.40 ft. west and 0.20 ft. south of the cross-cut on the rock.

(f) Was the corner restored through acceptance of (1) an obliterated evidence location, or, (2) a found perpetuated location?

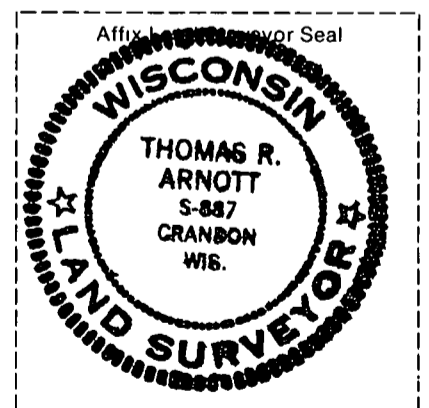
NO. 2

(g & h) Was the corner reestablished through lost corner proportionate methods? If so, show the method, including the directions and distances to other public land survey corners used as evidence or used for proportioning in determining the corner location.

no

(i) I, Thomas Arnott S-887
(type or print name)

certify that the corner location shown on this record was determined by me or under my direction and control and that this U.S. Public Land Survey Monument Record is correct and complete to the best of my knowledge and belief.



Thomas Arnott
Signature

10 Sept. 1992
Date

CERTIFIED LAND CORNER RESTORATION

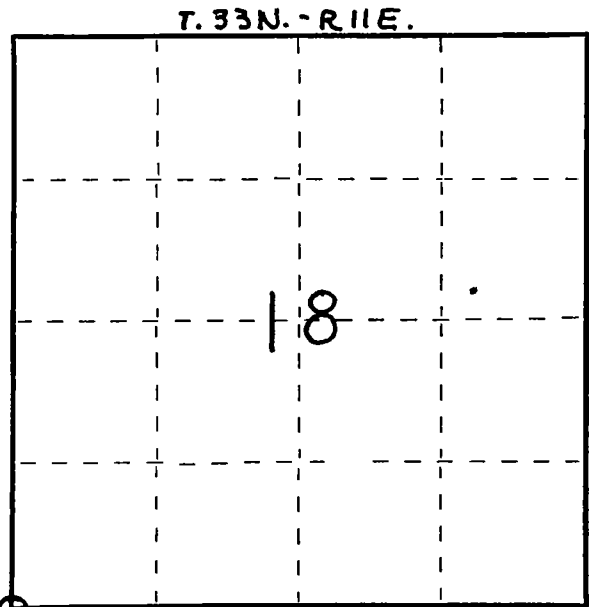
Index No. N-1

State of Wisconsin }
County of LANGLADE } ss.

I WILLIAM F. KELLY, do hereby certify that on the 24TH day of MARCH, 19 77, I found evidence of the SECTION corner of SECTIONS 13, 18, 24, 19 Township 33, North, Range 11 E, Fourth Principal Meridian, as described hereon; and that from this evidence I established a new monument and accessories as described hereon to perpetuate the original location of this corner.

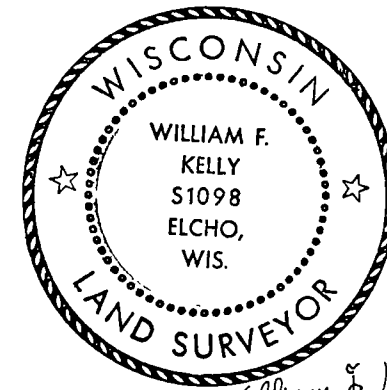
Resident witnesses:

.....
.....
.....



○ = Corner monument restored.

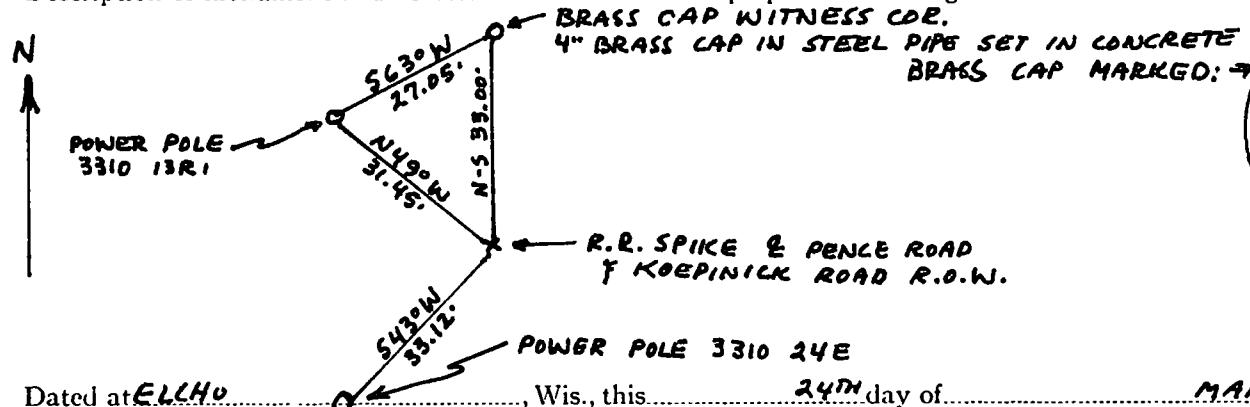
History of original corner establishment:



William F. Kelly

Description of corner evidence found:
LOCATED WITNESS CORNER TO SECTION COR. $\frac{13}{24} \frac{18}{19}$ - 4" BRASS CAP SET ON 1936 RESURVEY.
ALSO FOUND RAILROAD SPIKE 50 LKS SOUTH OF WITNESS CORNER.

Description of monument and accessories I established to perpetuate the original location of this corner.



Dated at ELCHO, Wis., this 24TH day of MARCH, 19 77.

Signature William F. Kelly Title REGISTERED LAND SURVEYOR Registration No. 51098
(County Surveyor, Registered Land Surveyor, or other duly authorized official)

Office of Register of Deeds, County of....., I hereby certify that the within instrument was filed in this office for record on the.....day of....., 19..... at..... o'clock..... M.

(Register of Deeds)

By..... Deputy