

# LANGLADE COUNTY U.S. PUBLIC LAND CORNER RESTORATION

The South Quarter corner of Section 12, T. 33 N., R. 10 E., Langlade County, WI.

**Corner was: (check all that apply)**

4331012.0020

- Restored through acceptance of an obliterated evidence location.
- Restored through acceptance of a found perpetuated location.
- Determined to be lost and re-established through proportionate methods.
- Show bearings and distances to PLSS corners used for proportioning, and show original distances).
- Restored/recovered/re-established in a location that differs from a previously established position.
- (Show difference in plan view below).
- Check here if additional information is shown on the reverse side of this form.

**Describe record evidence, recovered physical evidence, occupational evidence, testimonial evidence and all other evidence considered in the recovery/restoration of the corner.**

The original corner was established in 1860 by Hiram Fellows. At 40.30 ch he set corner and marked bearing trees: tam, 6", N65W, 13 links and a birch, 12", N52E, 9 links. In 1902, B.F.Dorr (Fb97-133) couldn't find evidence of the corner and re-established it by proportioning, at 40.175 ch. but didn't say what he set for the corner. He marked one new BT: sugar, 11", S24E, 42 1/2 lks. In 1915 Hutchinson (FB94-141) said the corner was a 3" iron pipe with shoe on bottom and cap on top. In the 1939 township resurvey Hintz found "galv. iron pipe by Co. Surveyor". Nov. 2, 2011, D. Tlusty found 3" galvanized iron pipe with galvanized cap. Pipe is firmly in ground but leaning at 45° to the Southwest. As found, the top of pipe is probably 1.5' out of plumb. I accept it as the monument described by Hutchinson and found by Hintz in 1939. I dug out the monument and re-set it vertically above the point where the base of the pipe was. Found and measured to existing iron ties as shown below.

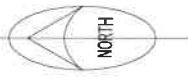
See map of survey 30588.

**Physical description of the monument set:**

For the corner, I straightened the existing 3" iron pipe with galvanized cap. Set a green steel channel post with "Forest Boundary" sign, 1.4' west of monument. Measured ties as shown below.

**Describe the accessories used to perpetuate the corner. Include a plan view drawing and accessories found/set. Describe measuring point on bearing trees. Show any topographic features that would aid in future recovery of the corner.**

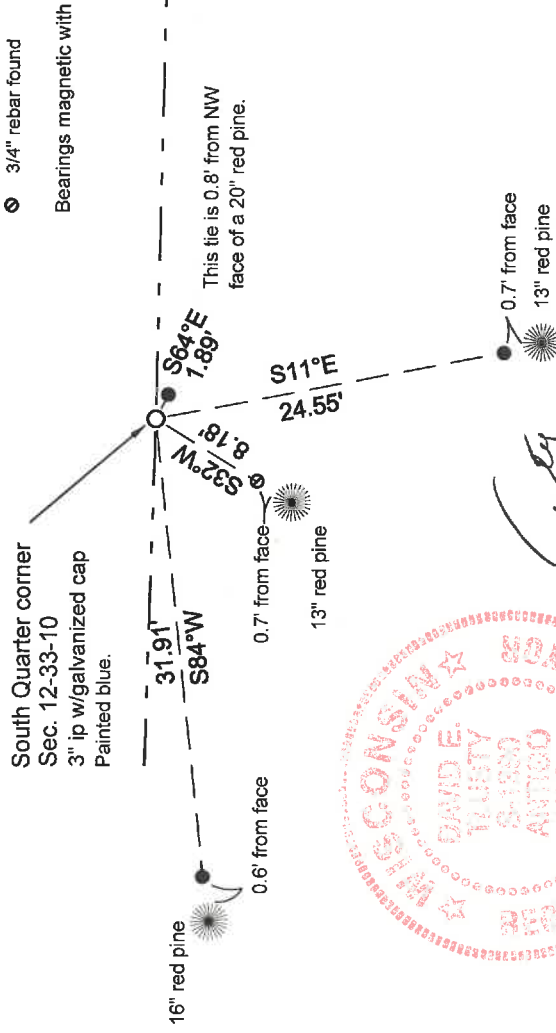
Field book 22-58



**LEGEND**

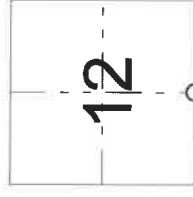
- 3" ip w/galvanized cap fnd
- 5/8" iron rod found
- ⊙ 3/4" rebar found

Bearings magnetic with hand compass.



I, David E. Tlusty, Registered Land Surveyor, as Langlade County Surveyor, certify that the corner location on this record was determined by me and that this U.S. Public Land Survey Monument Record is correct to the best of my knowledge and belief.

Index No. J23 33-10



○ = corner perpetuated  
The South 1/4 corner of Section 12, T. 33 N., R. 10 E., Langlade County, WI