

CERTIFIED LAND CORNER RESTORATION

Index No. J-23

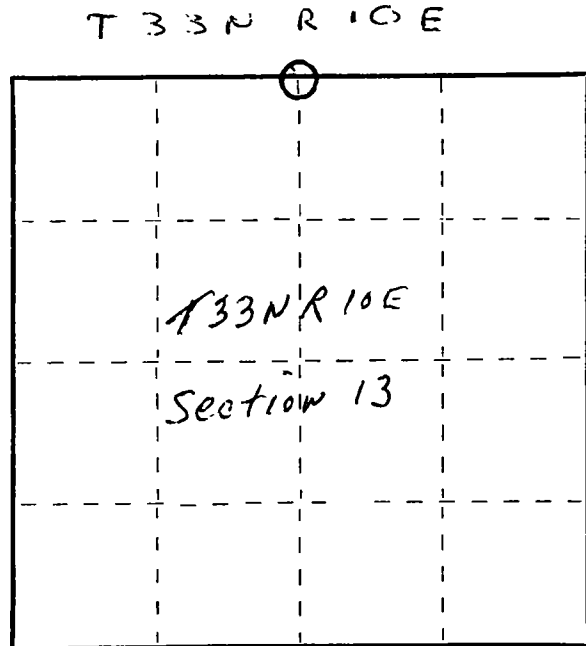
State of Wisconsin }
County of Langlade } ss.

I Raymond J. Hallisy, do hereby
certify that on the 3rd day
of June, 1978, I found
evidence of the 1/4
corner of 12 & 13
Township 33, North, Range
10E, Fourth Principal Meridian,
as described hereon; and that from this evidence
I established a new monument and accessories
as described hereon to perpetuate the original
location of this corner.

Resident witnesses:

.....
.....
.....

FORM 985 H. C. MILLER CO. - MILWAUKEE



○ = Corner monument restored.

History of original corner establishment:

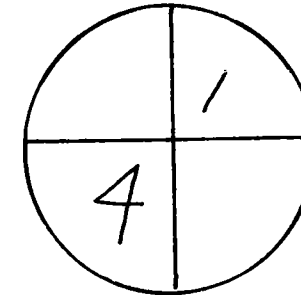
Description of corner evidence found:

4" Galvanized pipe with cap on south side of Golf Course.

Description of monument and accessories I established to perpetuate the original location of this corner.

New ET's

Red Pine	1 1/2"	S76E	3' 2"
Red Pine	9"	S18W	7' 10"
Red Pine	8"	S75W	23'



Dated at Antigo, Wis., this 3rd day of June, 1978.

Signature Raymond J. Hallisy Title Land Surveyor Registration No. S-685
(County Surveyor, Registered Land Surveyor, or other duly authorized official)

Office of Register of Deeds, County of _____, I hereby certify that the within
instrument was filed in this office for record on the _____ day of _____, 19____
at _____ o'clock _____ M.

.....
(Register of Deeds)

By..... Deputy