

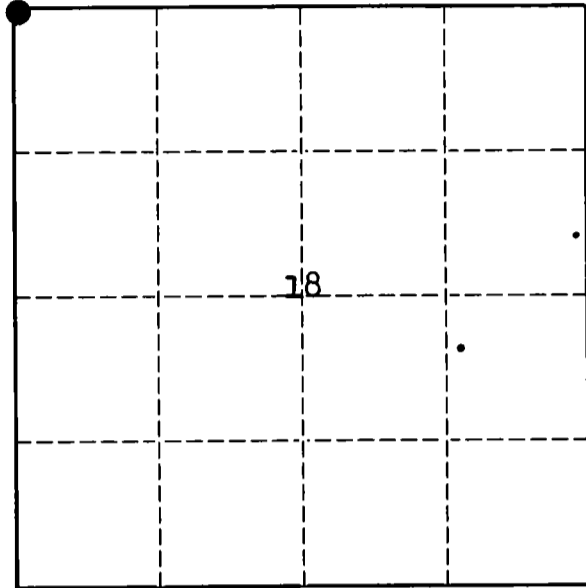
# U. S. PUBLIC LAND SURVEY MONUMENT RECORD

**INSTRUCTIONS:**

This record shall show the location of the corner and shall include all of the following nine elements (a through i).

- (a) Identify the corner by reference to the U.S. public land survey system.  
 O = Corner monument restored.

Sec. Cor. 7, 12, 13 and 18  
 T33N, R10-11E



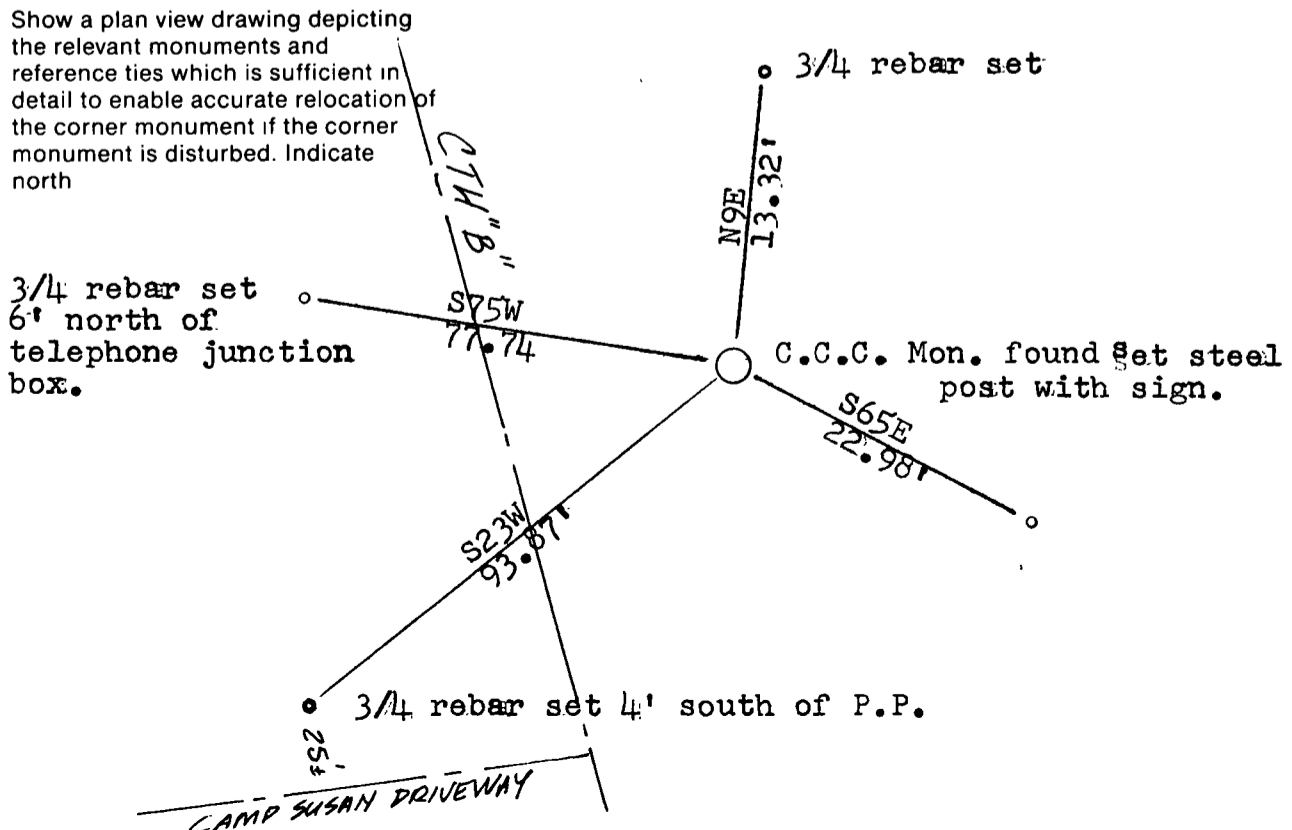
- (b) Describe any record evidence, monument evidence, occupational evidence, testimonial evidence or any other material evidence you considered, and whether the monument was found or placed.

**C.C.C. concrete filled steel monument with brass cap that was set in the 1930's was found. The BT's that were made by Hallisy in Nov. 1977 are now gone.**

*7/16/02 D. Tlusty Added Road Centerlines To Aid In Finding Corner.*

- (c) In the plan view drawing below, provide reference ties to at least 4 witness monuments, or, if the location is within a municipality, to at least 2 witness monuments. (Witness monuments shall be made of concrete, natural stone, iron or other equally durable material.) Describe witness monuments.

- (d) Show a plan view drawing depicting the relevant monuments and reference ties which is sufficient in detail to enable accurate relocation of the corner monument if the corner monument is disturbed. Indicate north



71

Describe any material discrepancy between the location of the corner as restored or reestablished and the location of that corner as previously restored or reestablished by distance and direction. Show the discrepancy on the plan view drawing under (d), above. Show the distances between the corner as previously restored or reestablished and (1) the corner as restored or reestablished, and (2) to at least 2 of the witness monuments shown on the drawing in (d), above.

N/A

(f) Was the corner restored through acceptance of (1) an obliterated evidence location, or, (2) a found perpetuated location.?

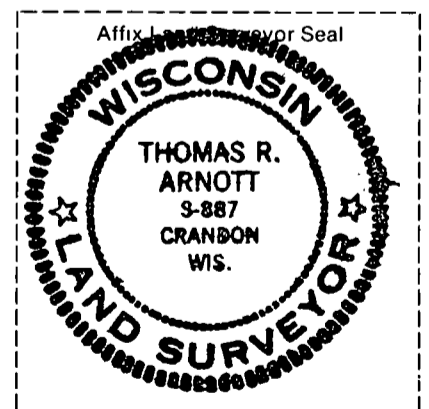
No. 2

(g & h) Was the corner reestablished through lost corner proportionate methods? If so, show the method, including the directions and distances to other public land survey corners used as evidence or used for proportioning in determining the corner location.

No

(i) I, Thomas Arnott S-887  
(type or print name)

certify that the corner location shown on this record was determined by me or under my direction and control and that this U.S. Public Land Survey Monument Record is correct and complete to the best of my knowledge and belief.



Thomas Arnott  
Signature

16 Sept 1992  
Date

CERTIFIED LAND CORNER RESTORATION

Index No. J-1  
33-1P

State of Wisconsin }  
County of Lafayette } ss.

I Raymond J. Hallisy, do hereby certify that on the 9th day of October, 1977, I found evidence of the Section corner of 12, 7, 13, & 18 Township 33 North, Range 10E & 11E, Fourth Principal Meridian, as described hereon; and that from this evidence I established a new monument and accessories as described hereon to perpetuate the original location of this corner.

Resident witnesses:

.....  
.....  
.....

History of original corner establishment:

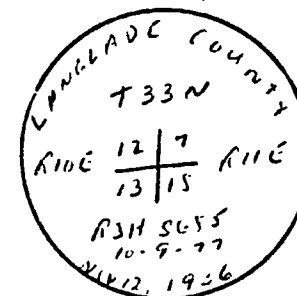
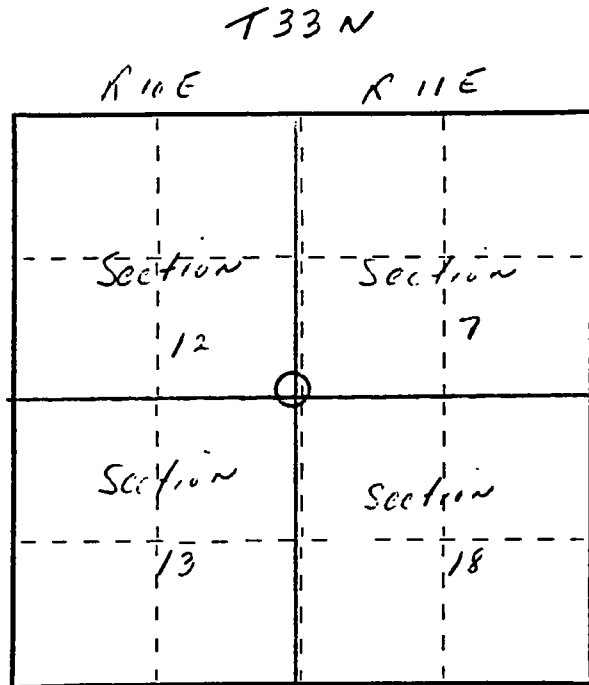
**Corner set in the 1930 resurvey.**

Description of corner evidence found:

**4" iron pipe with brass cap  
C&W RR Tracks East  
County Highway "B" West**

Description of monument and accessories I established to perpetuate the original location of this corner.

**12" Red Pine S72 W 99 Ft.  
16" Red Pine S56W 97.8 Ft.  
WPS Light Pole #3311 - 721 S21W 90.7 Ft.**



Dated at Antigo, Wis., this 9th day of October, 1977.

Signature Raymond J. Hallisy Title Land Surveyor Registration No. S685  
(County Surveyor, Registered Land Surveyor, or other duly authorized official)

Office of Register of Deeds, County of....., I hereby certify that the within instrument was filed in this office for record on the..... day of....., 19..... at..... o'clock..... M.

.....  
(Register of Deeds)

By..... Deputy

○ = Corner monument restored.