

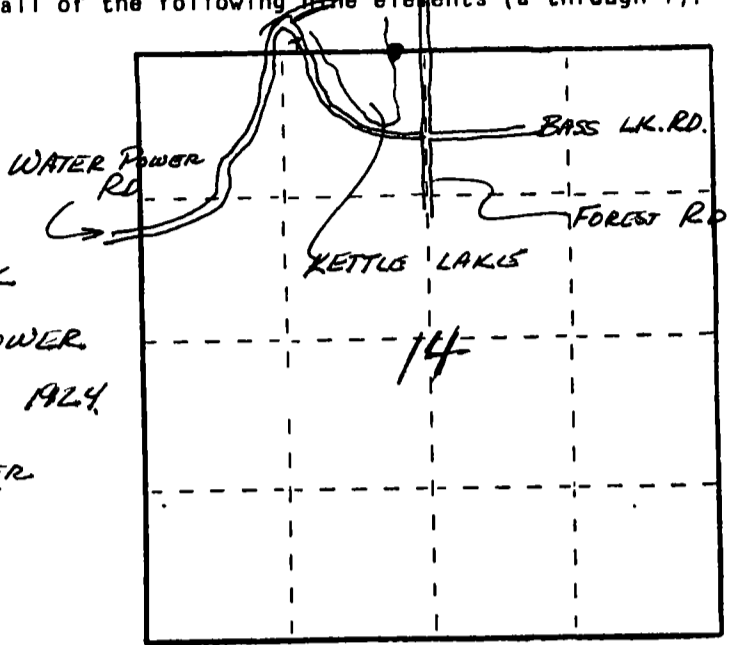
U. S. PUBLIC LAND SURVEY MONUMENT RECORD

INSTRUCTIONS: This record shall show the location of the corner and shall include all of the following nine elements (a through i).

- (a) Identify the corner by reference to the U.S. public land survey system.
 O = Corner monument restored.

SET BY JAMES H. EDICK
 FOR LONG LAKE-WATER POWER
 LAKE PLAT - AUGUST 6, 1924
MEANDER CORNER

T33N R 10E



- (b) Describe any record evidence, monument evidence, occupational evidence, testimonial evidence or any other material evidence you considered, and whether the monument was found or placed.

* CORNER 3 → 2" IRON PIPE (M.C.) ON EAST SHORE OF KETTLE LAKE
 " ③ " BELOW - ITEM D
 PLUS
 4" B.C. WITNESS CORNER TO ABOVE M.C. N 18°W
 23' 9"

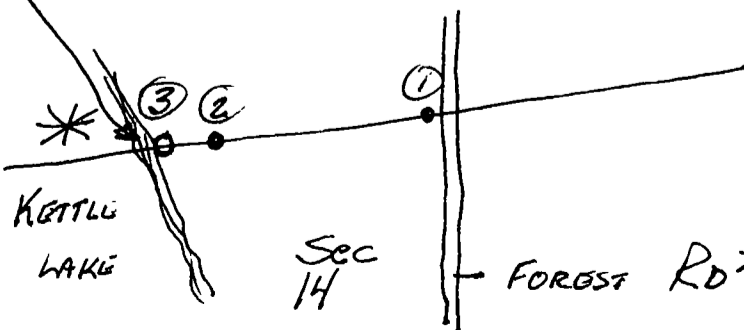
- (c) In the plan view drawing below, provide reference ties to at least 4 witness monuments, or, if the location is within a municipality, to at least 2 witness monuments. (Witness monuments shall be made of concrete, natural stone, iron or other equally durable material.) Describe witness monuments.

- (d) Show a plan view drawing depicting the relevant monuments and reference ties which is sufficient in detail to enable accurate relocation of the corner monument if the corner monument is disturbed. Indicate north.

B.T.'S TO 2" IRON PIPE

- | | | | |
|---|----------------|-------|-------|
| ① | 6" WHITE BIRCH | S32°E | 13' |
| ② | 4" WHITE BIRCH | S26°E | 14' |
| ③ | 6" WHITE BIRCH | S3°E | 17'8" |
| ④ | 5" RED MAPLE | N70°W | 8'8" |

Sec
11



- ① W.C. to 1/4 Sec 11 1/4
 ② W.C. to M.C. - 4" B.C.
 * ③ 2" IRON PIPE - M.C. - LONG LAKE - WATER POWER LAKE PLAT

718.7

