

CERTIFIED LAND CORNER RESTORATION

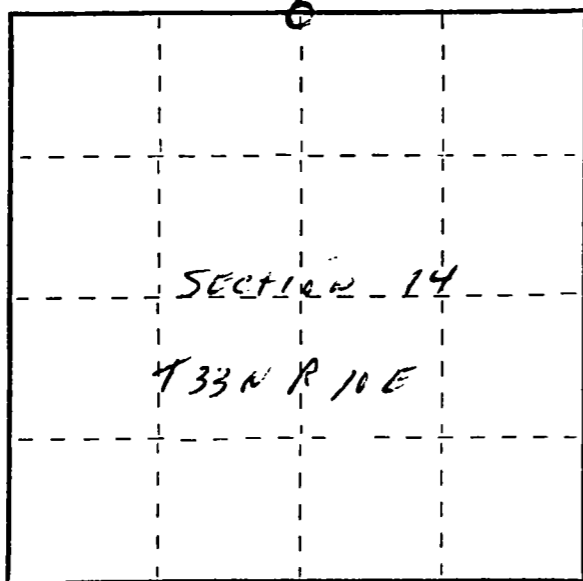
Index No. J-19

State of Wisconsin }
County of LAKE LAKE } ss.

I RAYMOND S. HALLISY, do hereby certify that on the 23RD day of MARCH, 1990, I found evidence of the 1/4 corner of SECTION 14 T33N R10E Township 33, North, Range 10E, Fourth Principal Meridian, as described hereon; and that from this evidence I established a new monument and accessories as described hereon to perpetuate the original location of this corner.

Resident witnesses:

.....
.....
.....



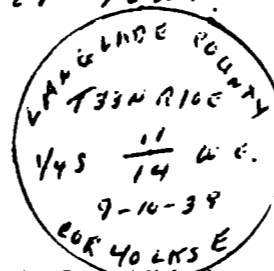
○ = Corner monument restored.

History of original corner establishment:

1930 RESURVEY

Description of corner evidence found:

1" PIPE ON EDGE OF TOWN ROAD, WITH A 4" BRASS CAP
40 LINKS WEST



Description of monument and accessories I established to perpetuate the original location of this corner.

NEW BT'S } TO 1" PIPE
NEW '80'S }

14" RED MAPLE S76W 16'

7" SPRUCE S33W 26'3"

SE CORNER OF GARAGE N44W 51'4"

SE CORNER OF HOUSE N86W 72'7"

Dated at ANTIGO, Wis., this 23RD day of MARCH, 1990.

Signature RAYMOND S. HALLISY Title LAND SURVEYOR Registration No. S-685
(County Surveyor, Registered Land Surveyor, or other duly authorized official)

Office of Register of Deeds, County of _____, I hereby certify that the within instrument was filed in this office for record on the _____ day of _____, 19____ at _____ o'clock _____ M.

(Register of Deeds)

By _____ Deputy

FORM 095 M. C. MILLER CO. MILWAUKEE