

33-10

CERTIFIED LAND CORNER RESTORATION

Index No. J-20

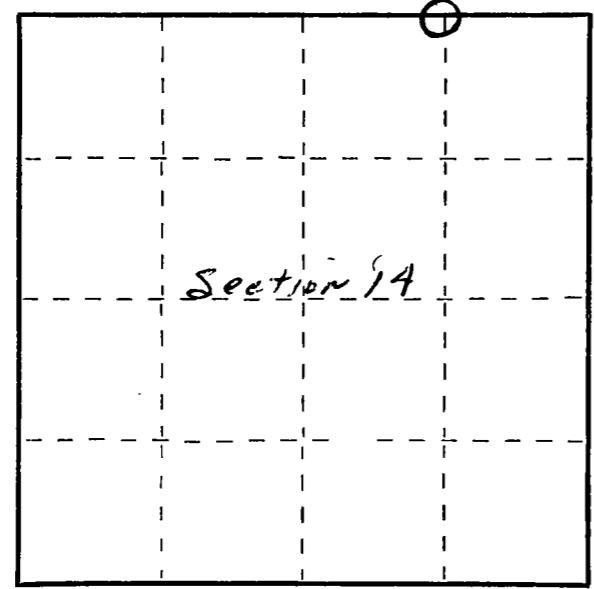
State of Wisconsin }
County of Langlade } ss.

I, Raymond J. Hallisy, do hereby certify that on the 10th day of May, 19 70, I found evidence of the E 1/16 corner of Section 14 Township 33, North, Range 10E, Fourth, Principal Meridian, as described hereon; and that from this evidence I established a new monument and accessories as described hereon to perpetuate the original location of this corner.

Resident witnesses:

J. Wain
J. Kruger

FORM 985 M. C. MILLER CO., MILWAUKEE



○ = Corner monument restored.

History of original corner establishment:

Corner set in the 1930 resurvey.

Description of corner evidence found:

Found old stake down, hold where stake had been, marked S11 S14 E1/16

Description of monument and accessories I established to perpetuate the original location of this corner.

Set 2" pipe with brass cap, rock mound.
New B.T.'s
Hard maple 10" N9E 14 Ft. 7 inches
Hard maple 4" S9W 9 Ft. 6 inches
B.T.'s faced at base of tree and scribed BT.



Dated at Antigo, Wis., this 10th day of May, 19 70

Signature Raymond J. Hallisy Title Reg. Land Surveyor Registration No. S-685
(County Surveyor, Registered Land Surveyor, or other duly authorized official)

Office of Register of Deeds, County of _____, I hereby certify that the within instrument was filed in this office for record on the _____ day of _____, 19 _____ at _____ o'clock _____ M.

(Register of Deeds)

By _____ Deputy