

LANGLADE COUNTY U.S. PUBLIC LAND CORNER RESTORATION

The Southeast corner of Section 11, T. 33 N., R. 10 E., Langlade County, WI.

Corner was: (check all that apply)

- Restored through acceptance of an obliterated evidence location.
- Restored through acceptance of a found perpetuated location.
- Determined to be lost and re-established through proportionate methods.
- Show bearings and distances to PLSS corners used for proportioning, and show original distances).
- Restored/recovered/re-established in a location that differs from a previously established position.
- (Show difference in plan view below).
- Check here if additional information is shown on the reverse side of this form.

4331011 0000 2018

Describe record evidence, recovered physical evidence, occupational evidence, testimonial evidence and all other evidence considered in the recovery/restoration of the corner.

The original corner was established in 1860 by Hiram Fellows. Original bearing trees: sugar, 16", N13E, 81 links and an ironwood, 7", S32W, 36 links. Notes in FB94, Pg. 141 by Malcolm Hutchinson (circa 1915) state that this corner is marked by an "iron pipe 3 ft. long with shoe on bottom and cap on top with corner marked on". In the 1930's resurvey, Hintz found galv. iron pipe by County Surveyor in old fence N, S & W. In 1975, former surveyor Kelly found a 3" pipe with galvanized cap. marked with corner identity, in line with N-S fence. Two of three existing bearing trees to be removed." Kelly new road construction. Road to cover the corner by 24" x 36". One of three existing bearing trees to be removed." Kelly marked new bearing trees and set new witness monument 33' south. 11/08/2011 D. Tlusty found PK nail in top of 1" iron pipe just below the pavement. Set short ties, removed pipe and at 34" below pavement I found the base of a 3" iron pipe. Above mentioned 1" pipe is directly above 3" base found. I accept this location as the best evidence of a perpetuated location of the original corner monument and perpetuate said location as shown below.

See map of survey 30588.

Physical description of the monument set:

For the corner, I replaced the existing 1" iron pipe with a fresh, straight 1" x 30" iron pipe with 2" dia. alum cap. set 0.35' below new pavement surface. The corner is in South Shore Rd and 2 feet from the south edge of pavement.

Measured ties, as shown below, with electronic total station.

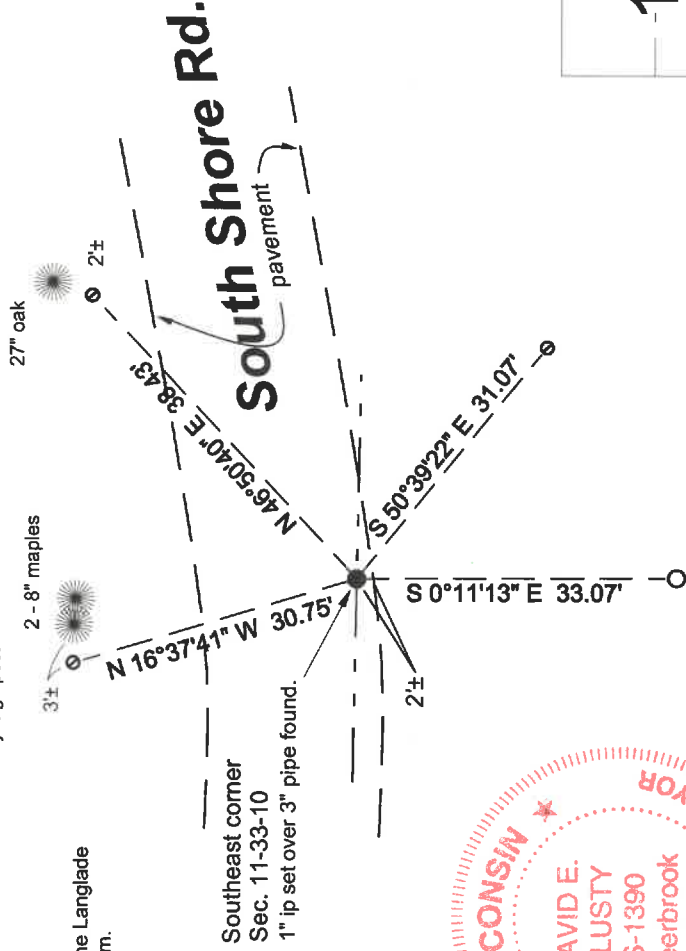
Describe the accessories used to perpetuate the corner. Include a plan view drawing and accessories found/set. Describe measuring point on bearing trees. Show any topographic features that would aid in future recovery of the corner.

LEGEND

- 2" ip w/brass cap found - marked with white vinyl sign post
- ⊙ 3/4" x 30" rebar set

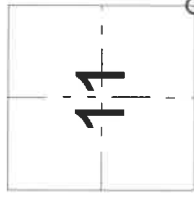
Bearings referenced to the Langlade County Coordinate system.

Field book 22-85



David E. Tlusty
6/14/2018

Index No. J21 33-10



○ = corner perpetuated
The Southeast corner of Section 11, T. 33 N., R. 10 E., Langlade County, WI

I, David E. Tlusty, Registered Land Surveyor, as Langlade County Surveyor, certify that the corner location on this record was determined by me and that this U.S. Public Land Survey Monument Record is correct to the best of my knowledge and belief.