

CERTIFIED LAND CORNER RESTORATION

Index No. J-21

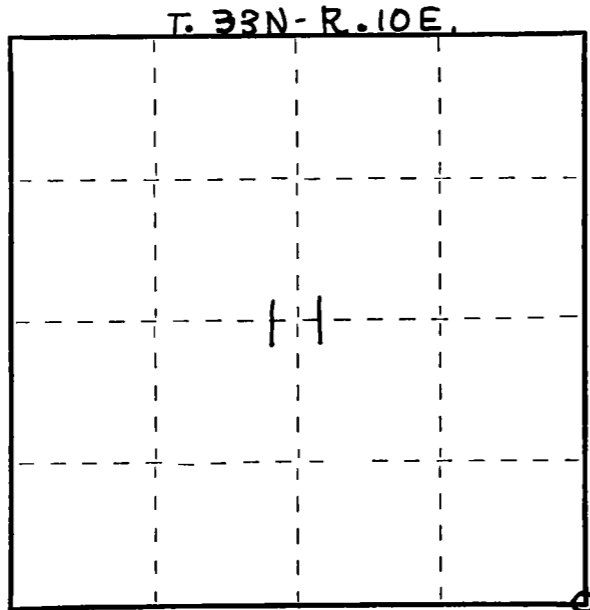
State of Wisconsin }
County of LANGLADE } ss.

I WILLIAM F. KELLY, do hereby certify that on the 4TH day of DECEMBER, 1975, I found evidence of the SECTION corner of SECTIONS 11, 12, 14 & 13 Township 33, North, Range 10E, Fourth Principal Meridian, as described hereon; and that from this evidence I established a new monument and accessories as described hereon to perpetuate the original location of this corner.

Resident witnesses:

.....
.....
.....

FORM 985 H. C. MILLER CO., MILWAUKEE



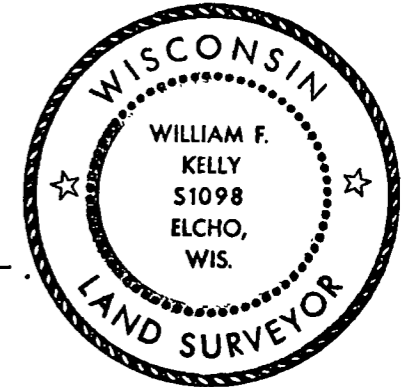
○ = Corner monument restored.

History of original corner establishment:

CORNER REFERENCED ON PLAT OF LANGLADE BEECH 2ND ADDITION.

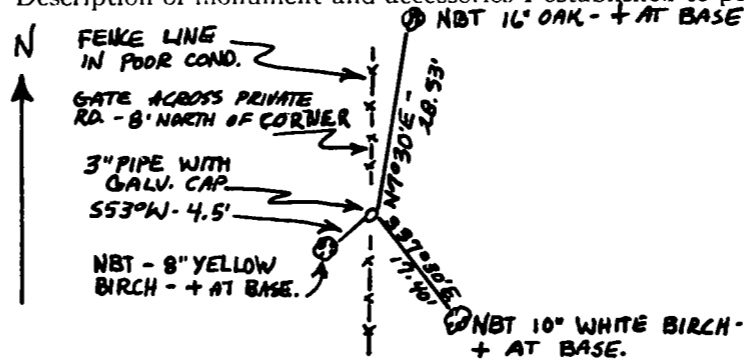
Description of corner evidence found:

FOUND 3" PIPE WITH GALVANIZED CAP MARKED 11/12 / 14/13



William F. Kelly

Description of monument and accessories I established to perpetuate the original location of this corner.



Dated at ELCHO, Wis., this 4TH day of DECEMBER, 1975

Signature: William F. Kelly Title REGISTERED LAND SURVEYOR Registration No. S1098
(County Surveyor, Registered Land Surveyor, or other duly authorized official)

Office of Register of Deeds, County of _____, I hereby certify that the within instrument was filed in this office for record on the _____ day of _____, 19____ at _____ o'clock _____ M.

(Register of Deeds)

By _____ Deputy

CERTIFIED LAND CORNER RESTORATION

Index No. J-21

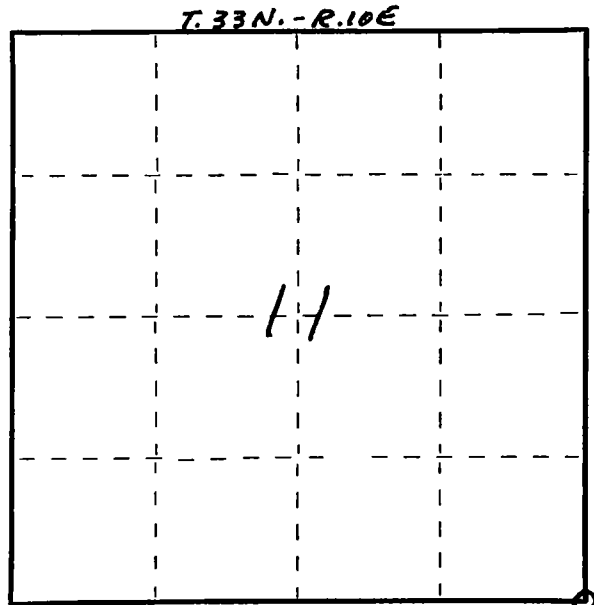
State of Wisconsin }
County of LANGLADE } ss.

I WILLIAM F. KELLY, do hereby certify that on the 4TH day of AUGUST, 1977, I found evidence of the SECTION corner of SECTIONS 11, 12, 14 & 13 Township 33, North, Range 10E, Fourth Principal Meridian, as described hereon; and that from this evidence I established a new monument and accessories as described hereon to perpetuate the original location of this corner.

Resident witnesses:

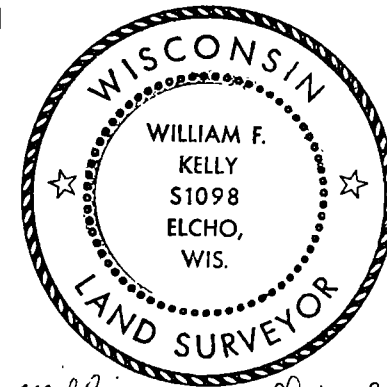
.....
.....
.....

FORM 985 H. C. MILLER CO., MILWAUKEE



○ = Corner monument restored.

History of original corner establishment:

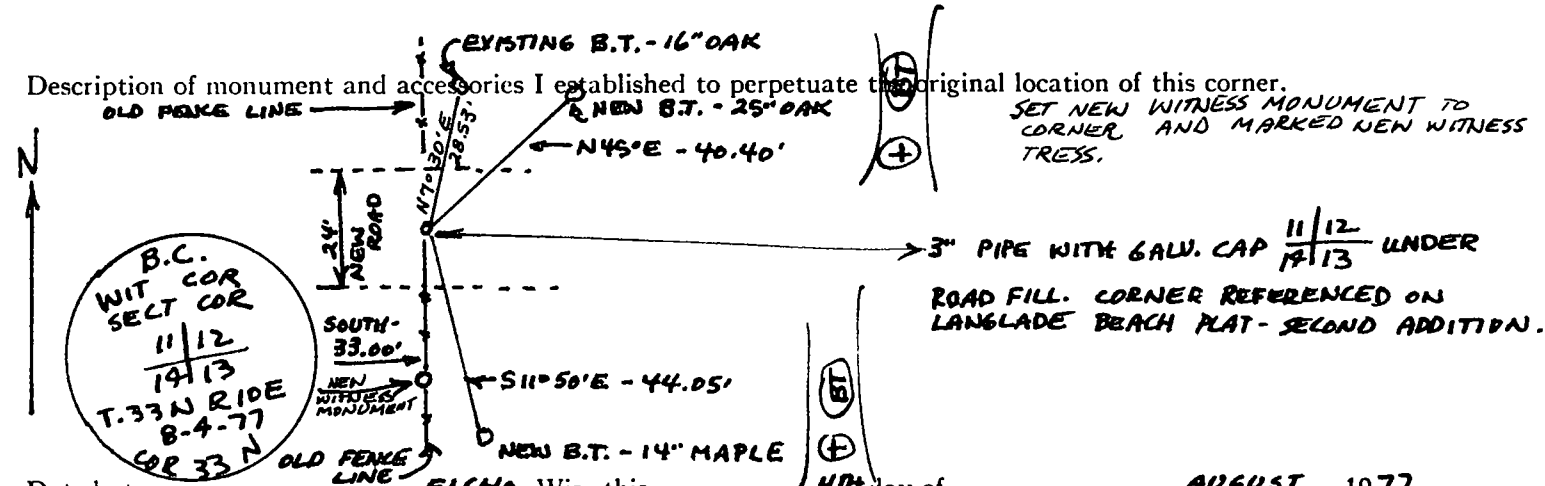


William F. Kelly 8/4/77

Description of corner evidence found:

EXISTING SECTION CORNER IN PATH OF NEW ROAD CONSTRUCTION. ROAD TO COVER THE CORNER BY 24" X 36". TWO OF THREE EXISTING BEARING TREES TO BE REMOVED.

Description of monument and accessories I established to perpetuate the original location of this corner.



Dated at ELCHO, Wis., this 4TH day of AUGUST, 1977.

Signature William F. Kelly Title REGISTERED LAND SURVEYOR Registration No. 51098
(County Surveyor, Registered Land Surveyor, or other duly authorized official)

Office of Register of Deeds, County of....., I hereby certify that the within instrument was filed in this office for record on the.....day of....., 19..... at.....o'clock..... M.

(Register of Deeds)

By.....Deputy