

LANGLADE COUNTY U.S. PUBLIC LAND CORNER RESTORATION

The South quarter corner of Section 10, T. 33 N., R. 10 E., Langlade County, WI.

Corner was: (check all that apply)

- Restored through acceptance of an obliterated evidence location.
- Restored through acceptance of a found perpetuated location.
- Determined to be lost and re-established through proportionate methods.
- Show bearings and distances to PLSS corners used for proportioning, and show original distances).
- Restored/recovered/re-established in a location that differs from a previously established position.
- (Show difference in plan view below).
- Check here if additional information is shown on the reverse side of this form.

4331010 0020

Describe record evidence, recovered physical evidence, occupational evidence, testimonial evidence and all other evidence considered in the recovery/restoration of the corner.

The original corner was established in 1860 by Hiram Fellows. Original bearing trees: hemlock, 10", N28W, 15 links and a hemlock, 10", S11E, 23 links.
 In the 1930's resurvey, Hintz "set the 1/4 cor. on prop. Could not find any old cor. at all. Stone, N60E, 39.2 links and stone at N85W, 26.6 links.
 In 1981, Ray Hallisy found 4" iron pipe with brass cap and found the two 1930's BO stones. He marked 4 new maple BT's. 10/10/2013 D. Tlusty found the 4" iron pipe with brass cap in good condition. Remarkd Hallisy BT's as shown below and measured to BO stones as shown below.

Physical description of the monument set:

For the corner, I left the existing monument in place and measured ties as shown below
 Added steel sign post 1' NW of monument.

Describe the accessories used to perpetuate the corner. Include a plan view drawing and accessories found/set. Describe measuring point on bearing trees. Show any topographic features that would aid in future recovery of the corner.

LEGEND

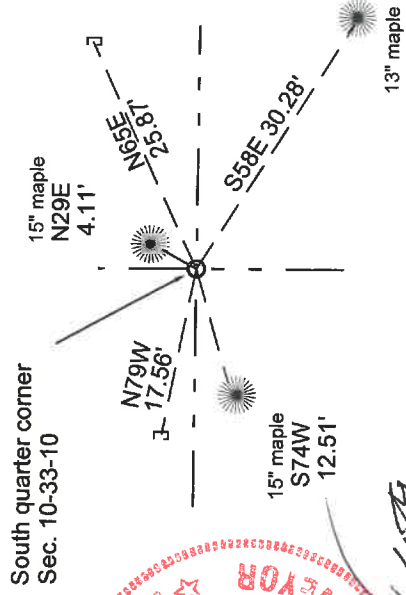
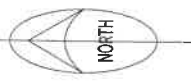
- 4" ip w/brass cap found
- found stone with chiseled X

Bearings magnetic with hand compass

Remarkd three Hallisy bearing trees.
 Distances are to the center face of low blaze remarked.

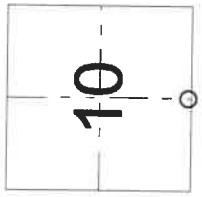
Langlade County coordinates
 NAD83(2011)
 N 416514.78
 E 600870.77

Field book 22-46



David E. Tlusty
 4/9/2020

Index No. J15 33-10



O = corner perpetuated
 The South quarter corner of Section 10, T. 33 N., R. 10 E., Langlade County, WI

I, David E. Tlusty, Registered Land Surveyor, as Langlade County Surveyor, certify that the corner location on this record was determined by me and that this U.S. Public Land Survey Monument Record is correct to the best of my knowledge and belief.

CERTIFIED LAND CORNER RESTORATION

Index No. J-15

State of Wisconsin }
County of Langlade } ss.

I, Raymond J. Hallisy, do hereby certify that on the 14th day of March, 1981, I found evidence of the 1/4 corner of Section 10 & 15 Township 33, North, Range 10E, Fourth Principal Meridian, as described hereon; and that from this evidence I established a new monument and accessories as described hereon to perpetuate the original location of this corner.

Resident witnesses:

.....
.....
.....

History of original corner establishment:
Corner set in the 1930 resurvey.

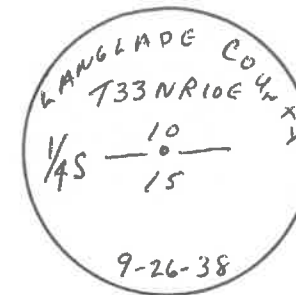
Description of corner evidence found:

4" pipe with brass cap
Stone with X N60E 39.21 Links
Stone with X N85W 26.6 Links

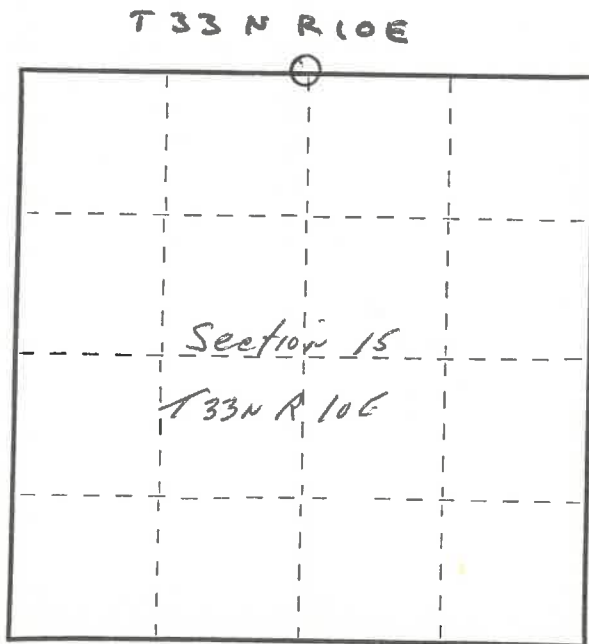
Description of monument and accessories I established to perpetuate the original location of this corner.

New BT's

12" Hard Maple S66E 30'6"
12" Hard Maple N24E 4'3"
14" Hard Maple S70W 12'8"



FORM 985 R. C. MILLER CO., MILWAUKEE



○ = Corner monument restored.

Dated at Antigo, Wis., this 14th day of March, 1981

Signature Raymond J. Hallisy Title Reg. Surveyor Registration No. S-685
(County Surveyor, Registered Land Surveyor, or other duly authorized official)

Office of Register of Deeds, County of....., I hereby certify that the within instrument was filed in this office for record on the.....day of....., 19..... at.....o'clock..... M.

.....
(Register of Deeds)

By.....Deputy