

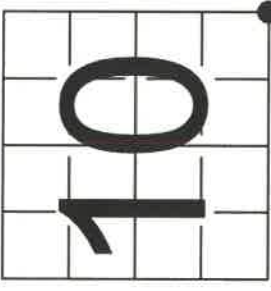
4331010 0000

U S PUBLIC LAND SURVEY MONUMENT RECORD

NOTE: This form is intended and designed to fulfill all requirements of Wisconsin Administrative Code, Chapter A-E 7.08 U.S. Public Land Survey Monument Record (3) (a-i)

(a) CORNER LOCATION
SE CORNER OF SECTION 10
TOWNSHIP 33 NORTH
RANGE 10 EAST OF THE 4TH PM
TOWN OF UPHAM
COUNTY OF LANGLADE

WISCONSIN - LANGLADE COUNTY
N: 416633.822 USft
E: 603556.422 USft
Datum: NAD83 (2011)
GNSS Method RTN - Direct
GNSS Control WISCORS VRS



(b) HISTORY OF ORIGINAL CORNER ESTABLISHMENT

Original Surveyor: Hiram C. Fellows
Date of Survey: October 6, 1860
Completed: October 18, 1860

Original Accessories:
Set Post - Corner to 10, 11, 14, 15
Hemlock 18 N70E 7 Links
Hemlock 30 S62W 14"
See previous USPLS Monument Record
INDEX NO. J-7

(f)(g)(h) Description of monument found at this corner and if it was accepted, state all evidence (material, testimonial, occupational, plats, records, other monuments) used as a basis for accepting. If not accepted or if nothing was found, state evidence used as basis for establishing location. If re-established through lost corner proportionate methods, indicate all monuments, distances and directions used to establish. Indicate type of monument and sign post found or set.

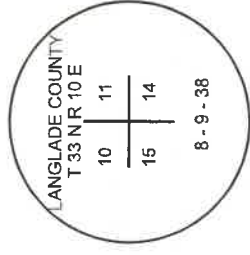
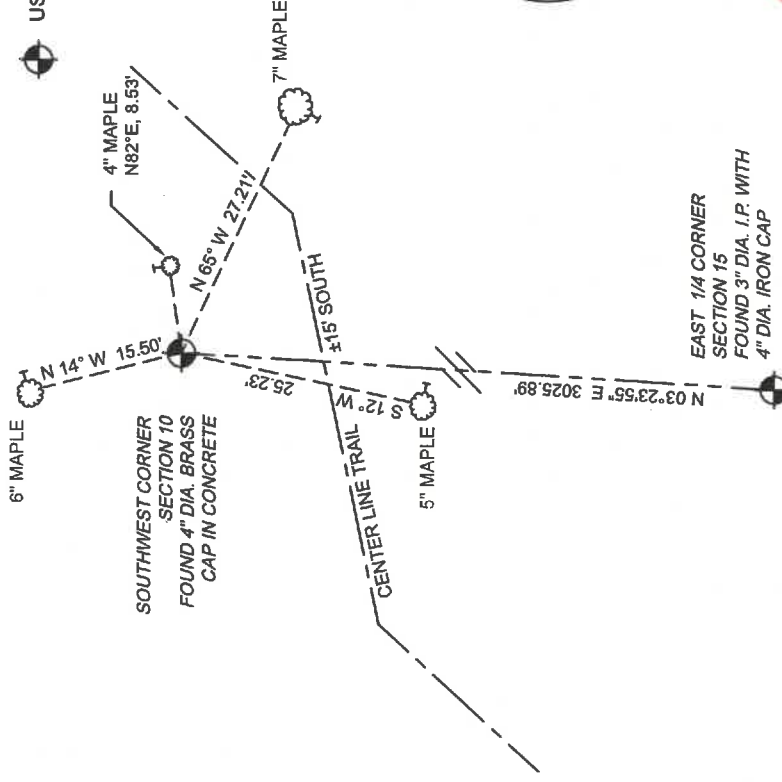
NOVEMBER 3, 1977 - SURVEYOR 1098 - WILLIAM F. KELLY INDICATES "CORNER SET IN 1938 RESURVEY".
KELLY LOCATED A 4" BRASS CAP SET IN CONCRETE. MARKED TO IDENTIFY CORNER
KELLY SET THE FOLLOWING ACCESSORIES:

- 20" YELLOW BIRCH N10°W 30.35' (NOW GONE)
- "OLD B.T. - ALMOST DEAD"
- 13" BASSWOOD N13°E 21.85' (TREE FELL, BOTTOM BLAZE VISIBLE)
- 20" BASSWOOD S87°E 28.30' (NOW DEAD STUMP, 15' TALL. TOP & BOTTOM BLAZE VISIBLE)
- 14" BASSWOOD S20°W 22' (NOW DEAD STUMP, 30' TALL. TOP BLAZE VISIBLE)

AUGUST 10, 2021 - I FOUND AND ACCEPTED A 4" DIAMETER BRASS CAP IN CONCRETE AND KELLY'S WITNESSES IN THE CONDITION MENTIONED ABOVE. I MADE NEW WITNESSES AS SHOWN BELOW.

The coordinate value shown has been verified by at least one of the following methods: 1)-comparison-to-a-previously-GPS-determined-published-value-2) the value is the average of two or more GPS observations at a markedly different time; 3)-one-or-more-distances-were-measured-back-to-the-GPS-observed-corner-from-temporary-GPS-observed-offset-locations:

(c)(d)(e) Plan view of corner with ties to at least 4 witness monuments. If in disagreement with previously established corner, show the distances between the two corners and also indicate the ties to the disputed.



(i) I, Jeffrey L. DeMuth, Professional Land Surveyor No. S-2656, hereby certify that the corner location on this record was determined by me or under my direction and control and that this U.S. Public Land Survey Monument Record is correct and complete to the best of my knowledge, and belief

Jeffrey L. DeMuth
SIGNATURE

AUGUST 19, 2021
DATE

43310100000

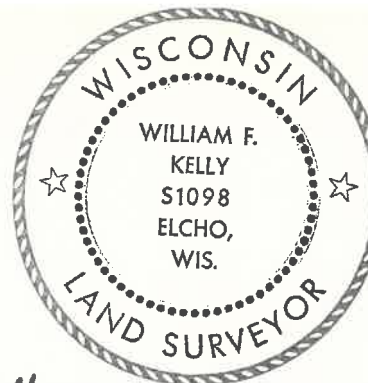
J17 33-10

CERTIFIED LAND CORNER RESTORATION

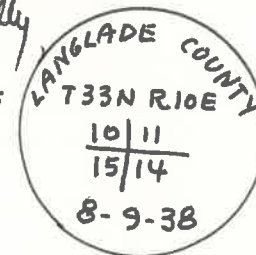
Index No. J-17

State of Wisconsin }
 County of LANGLADE } ss.

History of original corner establishment:
CORNER SET ON 1938 RESURVEY.



William F. Kelly



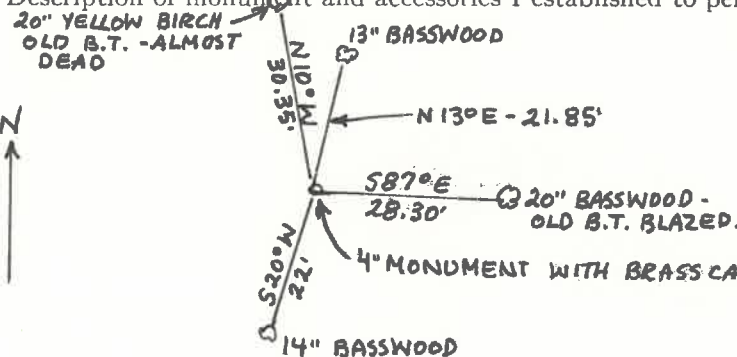
I WILLIAM F. KELLY, do hereby certify that on the 3RD day of NOVEMBER, 1977, I found evidence of the SECTION corner of SECTIONS 10, 11, 15 & 14 Township 33, North, Range 10E, Fourth Principal Meridian, as described hereon; and that from this evidence I established a new monument and accessories as described hereon to perpetuate the original location of this corner.

Description of corner evidence found:
LOCATED 4" BRASS CAP SET IN CONCRETE. MARKED:

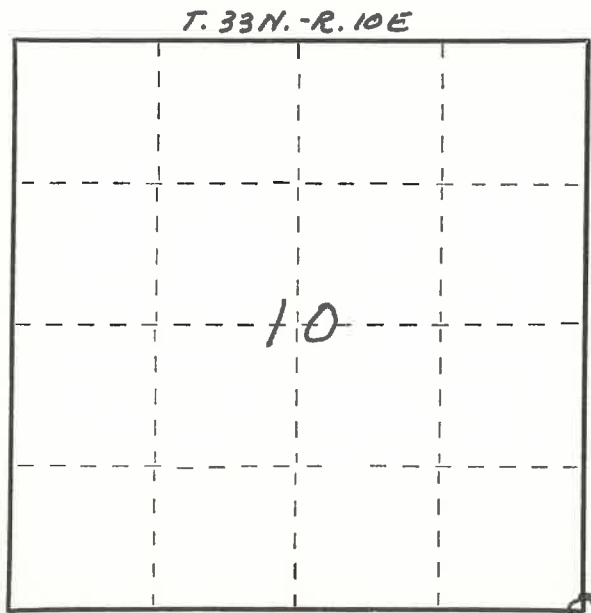
Resident witnesses:

.....

Description of monument and accessories I established to perpetuate the original location of this corner.



WITNESSED THE CORNER WITH NEW BEARING TREES.
 ALL BEARING TREES MARKED:



○ = Corner monument restored.

Dated at ELCHO, Wis., this 3RD day of NOVEMBER, 1977.

Signature William F. Kelly Title REGISTERED LAND SURVEYOR Registration No. S1098
 (County Surveyor, Registered Land Surveyor, or other duly authorized official)

Office of Register of Deeds, County of _____, I hereby certify that the within instrument was filed in this office for record on the _____ day of _____, 19____ at _____ o'clock _____ M.

(Register of Deeds)

By _____ Deputy