

LANGLADE COUNTY U.S. PUBLIC LAND CORNER RESTORATION

The east quarter corner of Section 9, T. 33 N., R. 10 E., Langlade County, WI.

Corner was: (check all that apply)

4331009 2000

- Restored through acceptance of an obliterated evidence location.
- Restored through acceptance of a found perpetuated location.
- Determined to be lost and re-established through proportionate methods.
- Show bearings and distances to PLSS corners used for proportioning, and show original distances).
- Restored/recovered/re-established in a location that differs from a previously established position.
- (Show difference in plan view below).
- Check here if additional information is shown on the reverse side of this form.

Describe record evidence, recovered physical evidence, occupational evidence, testimonial evidence and all other evidence considered in the recovery/restoration of the corner.

The original corner was established in 1860 by Hiram Fellows. Original bearing trees: white pine, 12", S82E, 9 links and a white pine, 10", N80W, 11 links.
 In the 1930's resurvey, Hintz said Orig 1/4 found old stake and one orig BT W. pine stp, 10", N80W, 16 links (10.5').
 10/10/2013 D. Tlusty found the 4" iron pipe leaning at the edge of road clearing. It appears that it was hit when the road was widened. Monument tilted about 45 degrees in the ground so I believe it was just hit, not moved out of place. I redug it at the location of the base so top is now flush with the ground. Road building appears to have destroyed OBT mentioned by Hintz. Ties shown below were added on April 10, 2020.

Physical description of the monument set:

For the corner, I dug out the existing 4" iron pipe with brass cap and reset it flush with the ground.
 I set a white vinyl sign post 1' north of the corner monument.

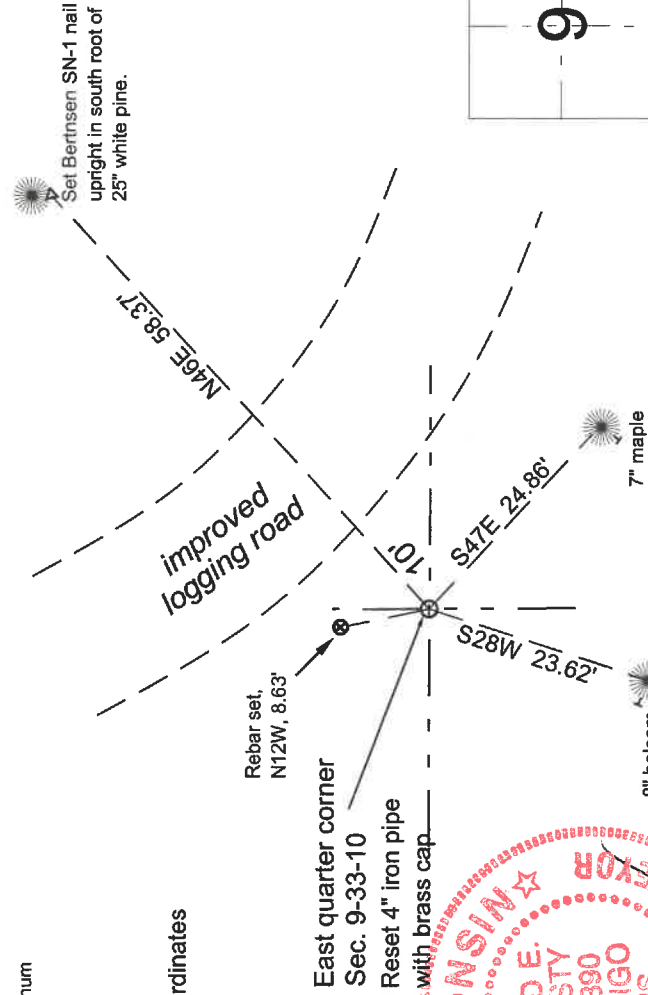
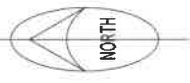
Describe the accessories used to perpetuate the corner. Include a plan view drawing and accessories found/set. Describe measuring point on bearing trees. Show any topographic features that would aid in future recovery of the corner.

LEGEND

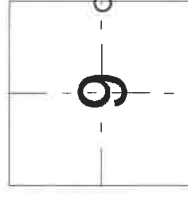
- 4" ip w/brass cap found
 - ⊙ 3/4" x 30" rebar set 0.9' down
- The bearings are magnetic with a hand compass.
 BT's measured to an aluminum nail in a low side blaze.
 Trees have Bearing Tree sign facing corner and are painted blue.

Langlade County coordinates
 NAD83(2011)
 N 419066.18
 E 598055.58

Field book 22-44



Index No. G13 33-10



○ = corner perpetuated
 The East quarter corner
 of Section 9
 T. 33 N., R. 10 E.,
 Langlade County, WI

I, David E. Tlusty, Registered Land Surveyor, as Langlade County Surveyor, certify that the corner location on this record was determined by me and that this U.S. Public Land Survey Monument Record is correct to the best of my knowledge and belief.