

LANGLADE COUNTY U.S. PUBLIC LAND CORNER RESTORATION

The South Quarter corner of Section 8, T. 33 N., R. 10 E., Langlade County, WI.

Corner was: (check all that apply)

43310080020

- Restored through acceptance of an obliterated evidence location.
- Restored through acceptance of a found perpetuated location
- Determined to be lost and re-established through proportionate methods.
Show bearings and distances to PLSS corners used for proportioning, and show original distances).
- Restored/recovered/re-established in a location that differs from a previously established position.
(Show difference in plan view below).
- Check here if addition information is shown on the reverse side of this form.

Describe record evidence, recovered physical evidence, occupational evidence, testimonial evidence and all other evidence considered in the recovery/restoration of the corner.

The original corner was established in 1860 by Hiram Fellows. Original bearing trees: birch, 12", S35°E, 18 links and a hemlock, 14", N66°W, 9 links. In 1939, D.A. Hintze: "Found badly burned stps. of Orig which show axe work. Cor. on North bank of wet ravine which runs E & W. New: W. Birch, 6", S23E, 16.6 lks (10.96'); cedar stp, 16", N56W, 107 lks. 11/01/06 D. Tlusty, Jim Miller, found monument leaning west, straightened it and redug it so top is now 1' above ground. Found white birch stump (sawed off 5± years ago), 14", S19E, 11'. Did not look for cedar remains in recent cut area. Accepted the monument found as the best evidence of the original corner location. Corner is on a steep sidehill, approx. 40' from the bottom of the hill which is the north edge of a wet area running E & W.

Physical description of the monument set:

For the corner, I left the existing 4" pipe with brass cap from the 1939 resurvey, in place. Set a white vinyl sign post, 0.6' North of the corner monument.

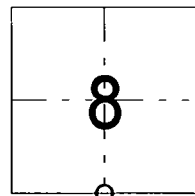
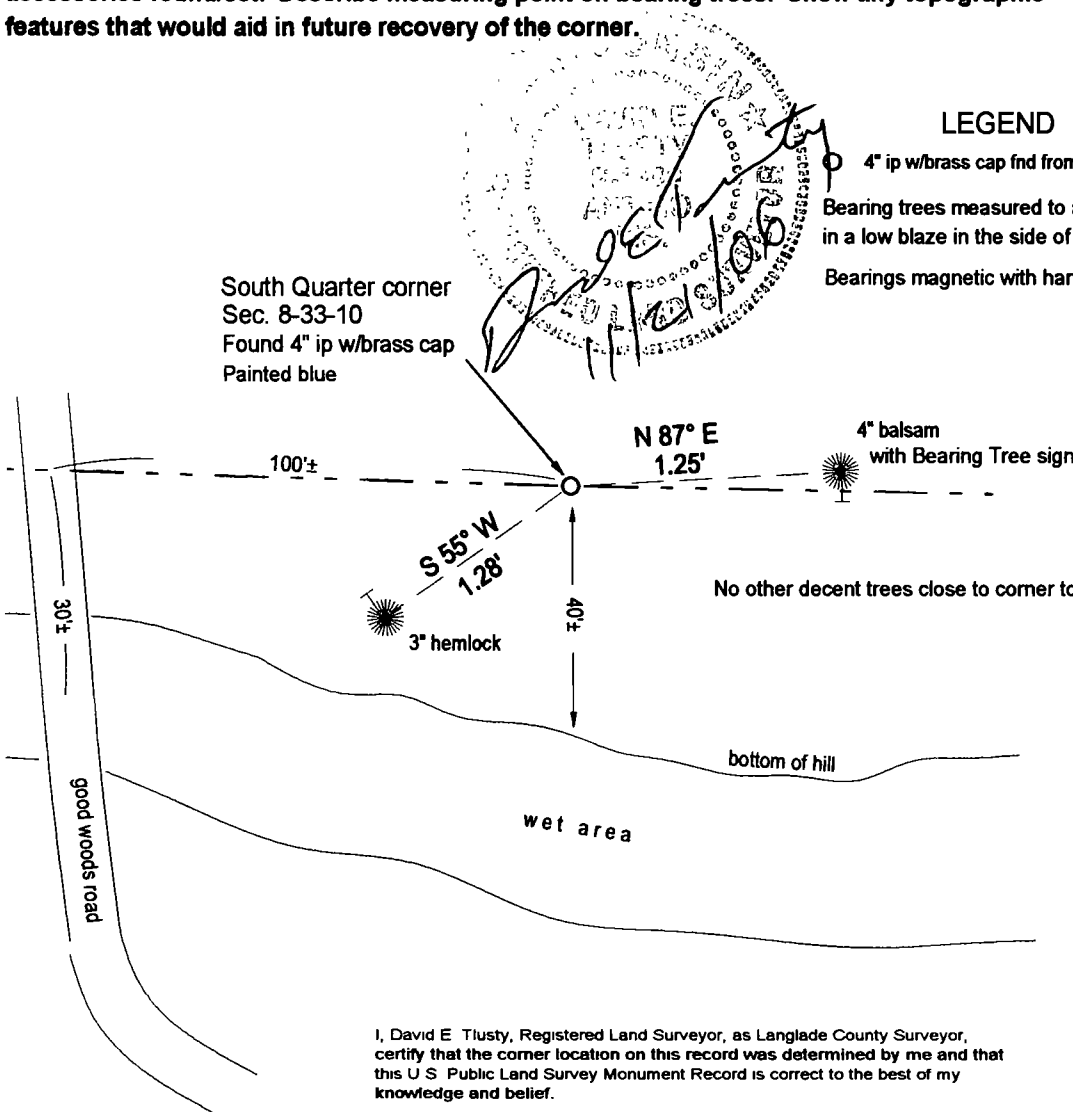
Field book 22-14

Describe the accessories used to perpetuate the corner. Include a plan view drawing and accessories found/set. Describe measuring point on bearing trees. Show any topographic features that would aid in future recovery of the corner.



LEGEND

- 4" ip w/brass cap fnd from 1930's re-survey
- Bearing trees measured to an aluminum nail in a low blaze in the side of the tree shown:
- Bearings magnetic with hand compass.



O = corner perpetuated
The South 1/4 corner of Section 8, T. 33 N., R. 10 E., Langlade County, WI

I, David E. Tlusty, Registered Land Surveyor, as Langlade County Surveyor, certify that the corner location on this record was determined by me and that this U.S. Public Land Survey Monument Record is correct to the best of my knowledge and belief.

Index No.

57
33-10