

CERTIFIED LAND CORNER RESTORATION

Index No. E-9

State of Wisconsin }  
County of LANGLADE } ss.

I, WILLIAM F KELLY, do hereby certify that on the 12<sup>th</sup> day of FEB, 1981, I found evidence of the SE corner of SEC. 5 Township 33, North, Range 10 EAST, Fourth Principal Meridian, as described hereon; and that from this evidence I established a new monument and accessories as described hereon to perpetuate the original location of this corner.

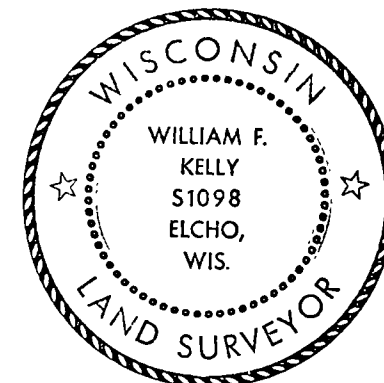
Resident witnesses:

KNIGHTS TEMPLAR CLUB

History of original corner establishment:  
ORIGINAL CORNER ESTABLISHED  
By HIRAM C. FELLOWS IN 1860.

Description of corner evidence found:

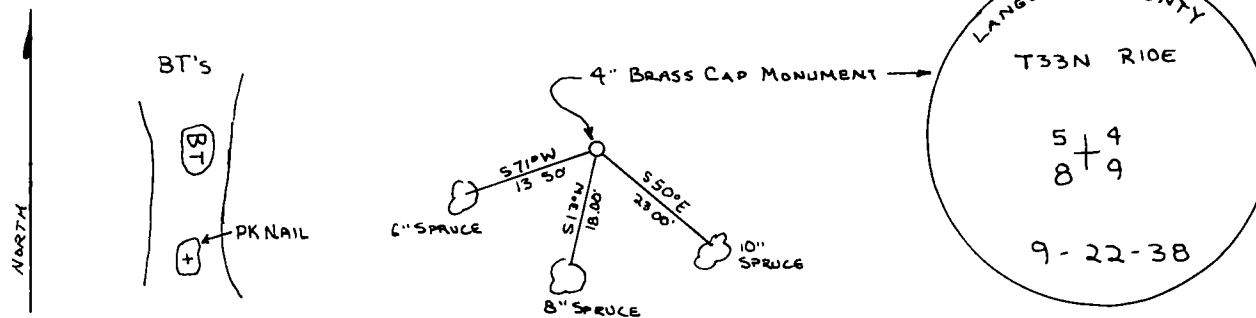
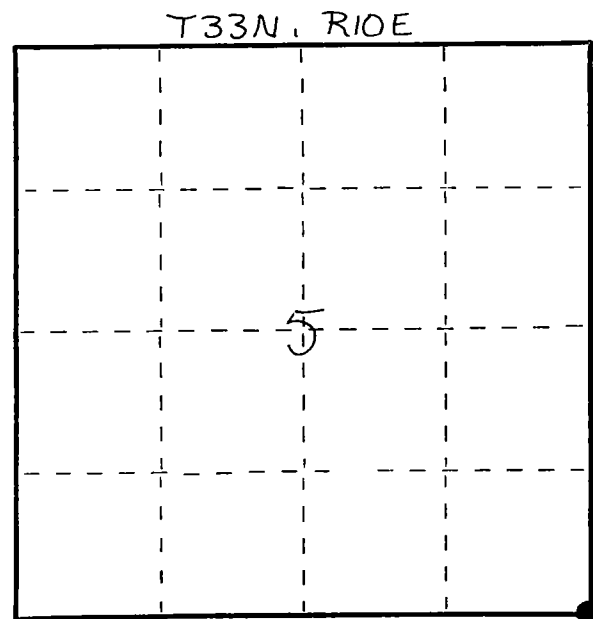
4" BRASS CAP MONUMENT  
FOUND IN PLACE.  
MONUMENT SET DURING  
RESURVEY OF TOWNSHIP  
IN 1938.  
MARKED NEW WITNESS TREES.



*William F. Kelly*

Description of monument and accessories I established to perpetuate the original location of this corner.

FORM 985 H. C. MILLER CO., MILWAUKEE



Dated at ELCHO, Wis., this 12<sup>th</sup> day of FEB., 1981.

Signature: *William F. Kelly* Title COUNTY SURVEYOR Registration No. 1098  
(County Surveyor, Registered Land Surveyor, or other duly authorized official)

Office of Register of Deeds, County of \_\_\_\_\_, I hereby certify that the within instrument was filed in this office for record on the \_\_\_\_\_ day of \_\_\_\_\_, 19\_\_\_\_ at \_\_\_\_\_ o'clock \_\_\_\_\_ M.

(Register of Deeds)

By \_\_\_\_\_ Deputy

○ = Corner monument restored.