

CERTIFIED LAND CORNER RESTORATION

Index No. B-13

State of Wisconsin }  
County of Langlade } ss.

I Raymond J. Hallisy, do hereby  
certify that on the 6th day  
of May, 1978, I found  
evidence of the N 1/16  
corner of Section 3 & 4  
Township 33  
10F, North, Range  
10F, Fourth Principal Meridian,  
as described hereon; and that from this evidence  
I established a new monument and accessories  
as described hereon to perpetuate the original  
location of this corner.

Resident witnesses:

.....  
.....  
.....

History of original corner establishment:

Corner set in the 1930 resurvey.

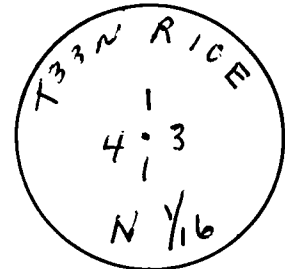
Description of corner evidence found:

Found old wood stake down, marked 1/16, point in ground.

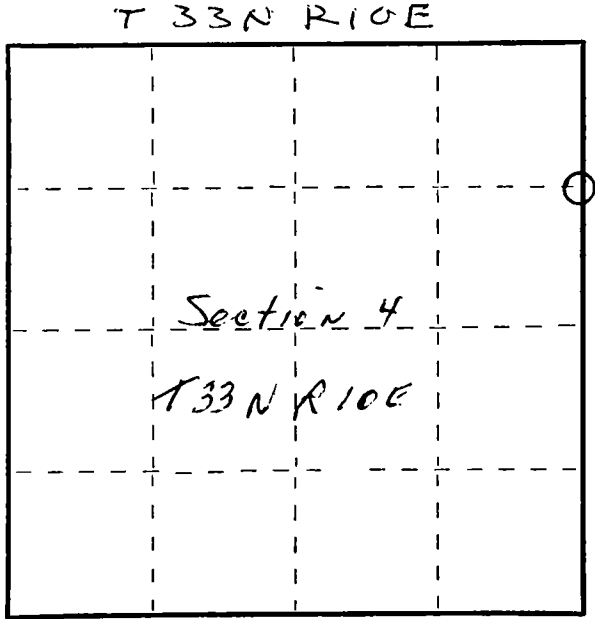
Description of monument and accessories I established to perpetuate the original location of this corner.

Set a 1 1/2" iron pipe with brass cap  
New BT's

- 10" White Pine 90 W 39' 6"
- 8" White Pine N 4E 22' 2"
- 10" Balsam N13F 13' 1"



FORM 985 M. C. MILLER CO. MILWAUKEE



○ = Corner monument restored.

Dated at Antigo, Wis., this 6th day of May, 1978.

Signature Raymond J. Hallisy Title Reg. Land Surveyor Registration No. S685  
(County Surveyor, Registered Land Surveyor, or other duly authorized official)

Office of Register of Deeds, County of \_\_\_\_\_, I hereby certify that the within  
instrument was filed in this office for record on the \_\_\_\_\_ day of \_\_\_\_\_, 19\_\_\_\_  
at \_\_\_\_\_ o'clock \_\_\_\_\_ M.

(Register of Deeds)

By \_\_\_\_\_ Deputy