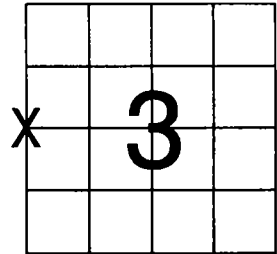


# U.S. PUBLIC LAND SURVEY MONUMENT RECORD

NOTE THIS FORM IS INTENDED AND DESIGNED TO FULFILL ALL REQUIREMENTS OF WISCONSIN ADMINISTRATIVE CODE, CHAPTER A-E 7.08 U.S. PUBLIC LAND SURVEY MONUMENT RECORD (3) (a) (b) (c) (d) (e) (f) (g) (h) (i). AN ADDITIONAL SHEET MAY BE ADDED IF NECESSARY TO CONFORM WITH SAID REQUIREMENTS.

(a) CORNER LOCATION: TOWNSHIP 33 NORTH  
RANGE 10 EAST/~~WEST~~  
TOWN/~~CITY/VILLAGE~~ UPHAM  
COUNTY LANGLADE



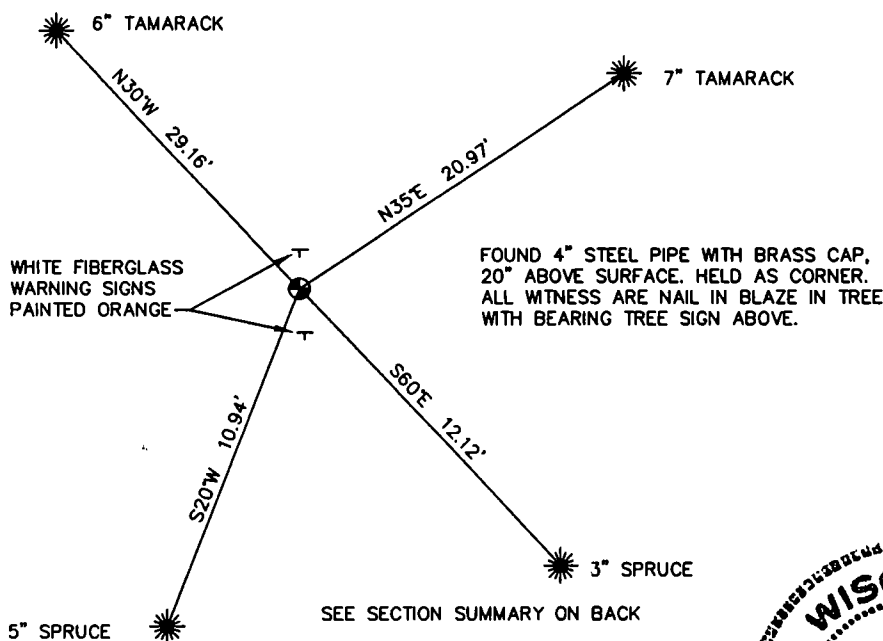
SECTION 3

(b) (f) (g) (h) DESCRIPTION OF MONUMENT FOUND AT THIS CORNER AND IF IT WAS ACCEPTED, STATE ALL EVIDENCE (MATERIAL, TESTIMONIAL, OCCUPATIONAL, PLATS, RECORDS, OTHER MONUMENTS) USED AS BASIS FOR ACCEPTING. IF NOT ACCEPTED OR IF NOTHING WAS FOUND, STATE EVIDENCE USED AS BASIS FOR ESTABLISHING LOCATION. IF REESTABLISHED THROUGH LOST CORNER PROPORTIONATE METHODS, INDICATE ALL MONUMENTS, DISTANCES AND DIRECTIONS USED TO ESTABLISH. INDICATE TYPE OF MONUMENT FOUND OR SET AND SIGN POST.

HAD TIE SHEET BY KELLY FROM 1981. FOLLOWING LINE OF NO TRESSPASSING SIGNS AND PINK / ORANGE RIBBON, COULD NOT FIND CORNER. SET GPS POINT OUT IN SWAMP, WENT ON COMPASS BEARING / DISTANCE, FOUND CORNER. TIES ARE ALL GONE. CORNER IS NOT ON LINE WITH NO TRESSPASSING SIGNS / RIBBON. CORNER IS ABOUT 1300 FEET EAST OF OLD RAIL ROAD GRADE AND 100 FEET SOUTH OF NO TRESSPASSING SIGNS.

FOUND 4" STEEL PIPE WITH BRASS CAP STICKING 20" ABOVE SURFACE. PAINTED PIPE ORANGE. PUT FIBERGLASS POST NORTH & SOUTH OF PIPE, PAINTED ORANGE. BLAZED 4 TREES AND PUT NAIL IN BLAZE. DISTANCE IS TO CENTER OF NAIL HEAD. PUT BEARING TREE SIGN CHEST HIGH ON TREES. HELD PIPE AS CORNER.

(c) (d) (e) PLAN VIEW OF CORNER WITH TIES TO AT LEAST 4 WITNESS MONUMENTS. IF IN DISAGREEMENT WITH PREVIOUSLY ESTABLISHED CORNER, SHOW THE DISTANCES BETWEEN THE TWO CORNERS AND ALSO INDICATE THE TIES TO THE DISPUTED CORNER.



(i) I, DAVID L. OSTERBRINK RLS NO. S-2014  
(TYPE OR PRINT NAME) CERTIFY THAT THE CORNER LOCATION ON THIS RECORD WAS DETERMINED BY ME OR UNDER MY DIRECTION AND CONTROL AND THAT THIS U.S. PUBLIC LAND SURVEY MONUMENT RECORD IS CORRECT AND COMPLETE TO THE BEST OF MY KNOWLEDGE AND BELIEF.

*David L. Osterbrink*  
SIGNATURE DATE 1-17-03



STAMP

INDEX NO C13

CERTIFIED LAND CORNER RESTORATION

Index No. C-13

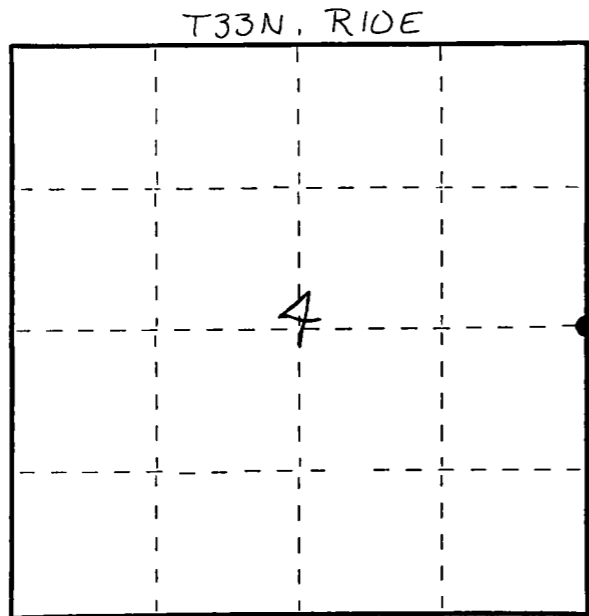
State of Wisconsin }  
County of LANGLADE } ss.

I WILLIAM F. KELLY, do hereby certify that on the 13<sup>th</sup> day of FEB., 19 81, I found evidence of the EAST 1/4 corner of SEC. 4 Township 33, North, Range 10 EAST, Fourth Principal Meridian, as described hereon; and that from this evidence I established a new monument and accessories as described hereon to perpetuate the original location of this corner.

Resident witnesses:

KNIGHTS TEMPLAR CLUB

FORM 985 H. C. MILLER CO. MILWAUKEE



○ = Corner monument restored.

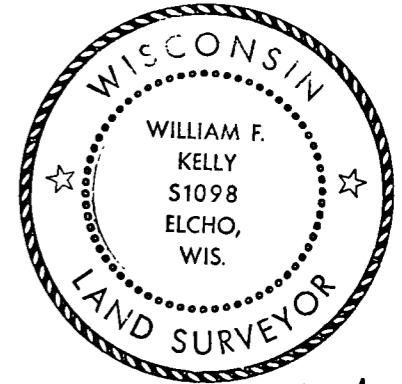
History of original corner establishment:

ORIGINAL CORNER ESTABLISHED  
BY HIRAM C. FELLOWS IN 1860.

Description of corner evidence found:

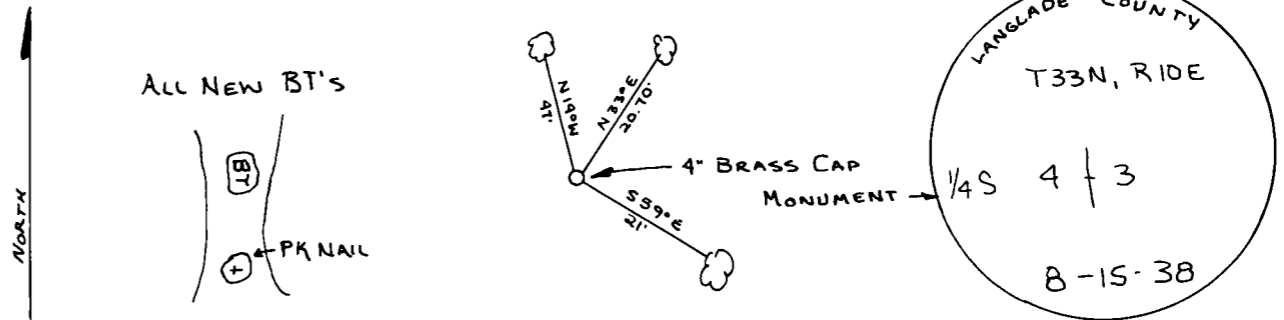
FOUND IN PLACE, 4" BRASS  
CAP MONUMENT, SET DURING  
RESURVEY OF TOWNSHIP IN 1938.

MARKED NEW WITNESS TREES.



*William F. Kelly*

Description of monument and accessories I established to perpetuate the original location of this corner.



Dated at ELCHO, Wis., this 13<sup>th</sup> day of FEB, 19 81.

Signature William F. Kelly Title COUNTY SURVEYOR Registration No. 1098  
(County Surveyor, Registered Land Surveyor, or other duly authorized official)

Office of Register of Deeds, County of \_\_\_\_\_, I hereby certify that the within instrument was filed in this office for record on the \_\_\_\_\_ day of \_\_\_\_\_, 19 \_\_\_\_\_ at \_\_\_\_\_ o'clock \_\_\_\_\_ M.

(Register of Deeds)

By \_\_\_\_\_ Deputy