

CERTIFIED LAND CORNER RESTORATION

Index No. C-17

State of Wisconsin }
County of LANGLADE } ss.

History of original corner establishment:



William F. Kelly

I William F. Kelly, do hereby certify that on the 17th day of April, 1975, I found evidence of the 1/4 corner of Sect. 3 & 2 Township 33, North, Range 10 E, Fourth Principal Meridian, as described hereon; and that from this evidence I established a new monument and accessories as described hereon to perpetuate the original location of this corner.

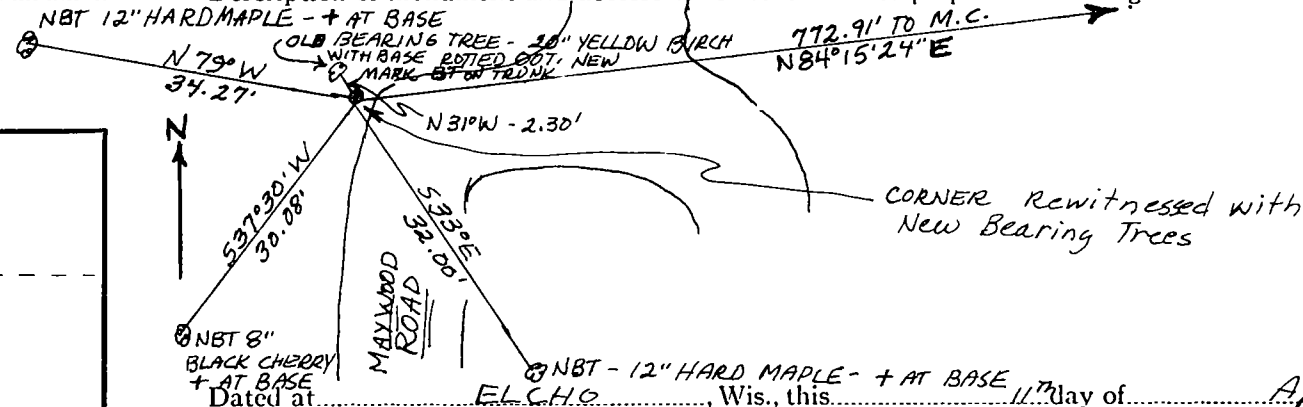
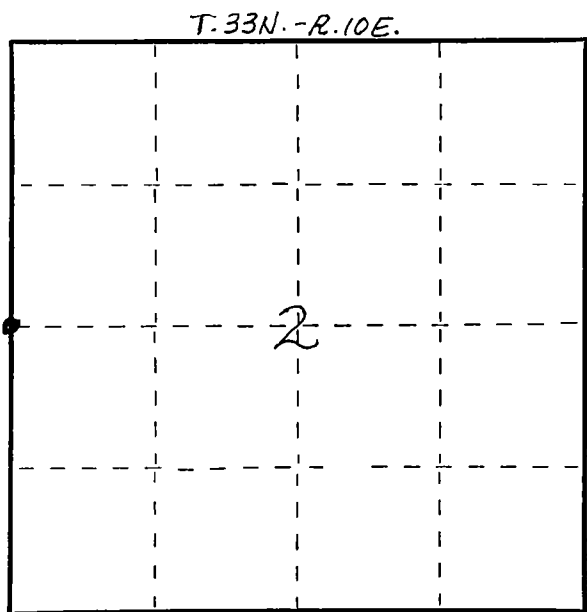
Description of corner evidence found:

*Located 1/4 Corner between Sect. 3 & 2 T.33N.-R.10E.
4" IRON PIPE filled with concrete with Brass Cap broken off.*

Resident witnesses:

.....
.....
.....

Description of monument and accessories I established to perpetuate the original location of this corner.



Dated at ELCHO, Wis., this 17th day of April, 1975

Signature William F. Kelly Title Registered Land Surveyor Registration No. 51098
(County Surveyor, Registered Land Surveyor, or other duly authorized official)

Office of Register of Deeds, County of....., I hereby certify that the within instrument was filed in this office for record on the.....day of....., 19..... at.....o'clock..... M.

(Register of Deeds)

By..... Deputy

○ = Corner monument restored.

FORM 985 H. G. MILLER CO., MILWAUKEE