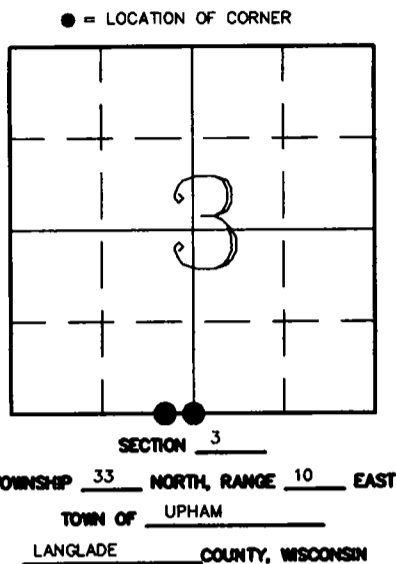


# U.S. PUBLIC LAND SURVEY MONUMENT RECORD

433/0030020

**HISTORY OF ORIGINAL CORNER ESTABLISHMENT AND SUBSEQUENT RESTORATION AND DESCRIPTION OF ANY RECORD, MONUMENT OCCUPATIONAL, TESTIMONIAL OR OTHER EVIDENCE CONSIDERED:**

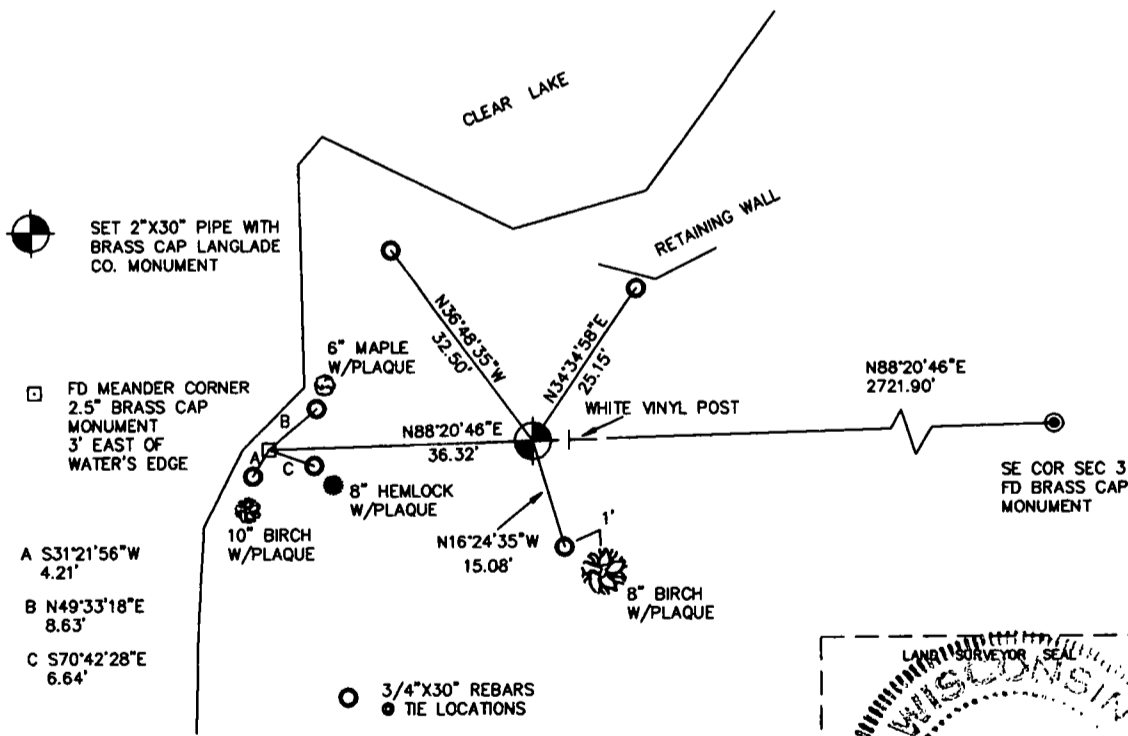
The Original Meander Corner was set in 1859 by Hiram C. Fellows. S1/4 was not set. Original BT's: Fir 6" S84E 14ks., Fir 8" N50E 10ks. County Surveyor Hutchinson, in 1938, ran the South line of Sec 3 and set a 2" pipe as a Meander Corner 41.94 chains West of SE Cor. No S1/4 set. In October of 2002, Charlie Brinkmeier and Gerry Bohar found Hutchinson's M.C. 3' East of water's edge. We also located found monuments at the meander corner location on the West side of lake and the SW Cor of Sec 3. To compute the S1/4 location, we split in half the total distance along the South line between the SE Cor and the SW Cor (5443.8') and applied that distance (2721.90') along the line between the SE Cor and Hutchinson's M.C. We set a Langlade Co. Monument at this S1/4 location, and tied out the M.C. and the S1/4.



**CORNER WAS: (CHECK ALL THAT APPLY)**

- RESTORED THROUGH ACCEPTANCE OF AN OBLITERATED EVIDENCE LOCATION
- RESTORED THROUGH ACCEPTANCE OF A FOUND PERPETUATED LOCATION
- CONSIDERED A LOST CORNER AND REESTABLISHED THROUGH LOST CORNER PROPORTIONATE METHODS (INCLUDE A PLAN VIEW DRAWING SHOWING DISTANCES AND DIRECTIONS TO OTHER PUBLIC LAND SURVEY CORNERS USED FOR PROPORTIONING AND DETERMINING THE CORNER LOCATION)
- RESTORED OR REESTABLISHED IN A LOCATION THAT DIFFERS FROM A PREVIOUS RESTORATION OR REESTABLISHMENT (INCLUDE A PLAN VIEW DRAWING AND INDICATE WHAT WAS SET AND/OR FOUND)
- CHECK IF THERE IS ADDITIONAL INFORMATION ON BACK

DESCRIBE THE MONUMENT AND ACCESSORIES USED TO PERPETUATE THE LOCATION OF THE CORNER. (INCLUDE A PLAN VIEW DRAWING AND INDICATE WHAT WAS SET AND/OR FOUND) ALSO INCLUDE FOUR TIES TO THE SECTION CORNER AND DESCRIPTION OF THE TIES.



**DANIEL E. HIGGINBOTHAM**

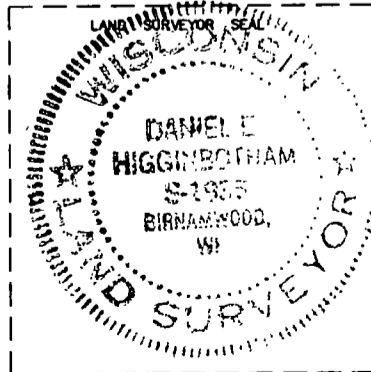
(type or print name) CERTIFY THAT THE CORNER LOCATION SHOWN ON THIS RECORD WAS DETERMINED BY ME OR UNDER MY DIRECTION AND CONTROL AND THAT THIS U.S. PUBLIC LAND SURVEY MONUMENT RECORD IS CORRECT AND COMPLETE TO THE BEST OF MY KNOWLEDGE AND BELIEF.

*D. Higginbotham*

SIGNATURE

7/28/03

DATE



E-15  
INDEX NO.