

Stock No. 26273

## U. S. PUBLIC LAND SURVEY MONUMENT RECORD

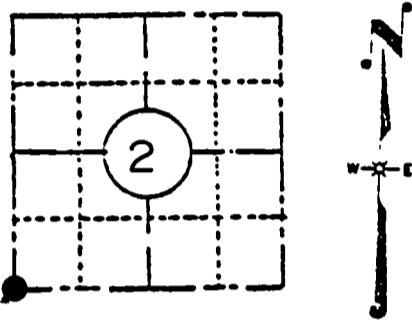
## INSTRUCTIONS:

This record shall show the location of the corner and shall include all of the following nine elements (a through i).

- (a) Identify the corner by reference to the U.S. public land survey system.

T 33 N, R 10 E  
SECTION 2

UPHAM TOWNSHIP  
LANGLADE COUNTY



## LOCATION SKETCH

(Location of landmark indicated by "●")

- (b) Describe any record evidence, monument evidence, occupational evidence, testimonial evidence or any other material evidence you considered, and whether the monument was found or placed.

On August 23, 1990 we found a 4" diam. brass capped concrete filled iron post stamped to identify the corner. This monument was set by D.A. Hintz during the course of a Retracement Survey of the Township completed on May 11, 1939. (Notes filed in the Langlade County Surveyor's Office.)

- (c) In the plan view drawing below, provide reference ties to at least 4 witness monuments, or, if the location is within a municipality, to at least 2 witness monuments. (Witness monuments shall be made of concrete, natural stone, iron or other equally durable material, except wood.) Describe witness monuments.

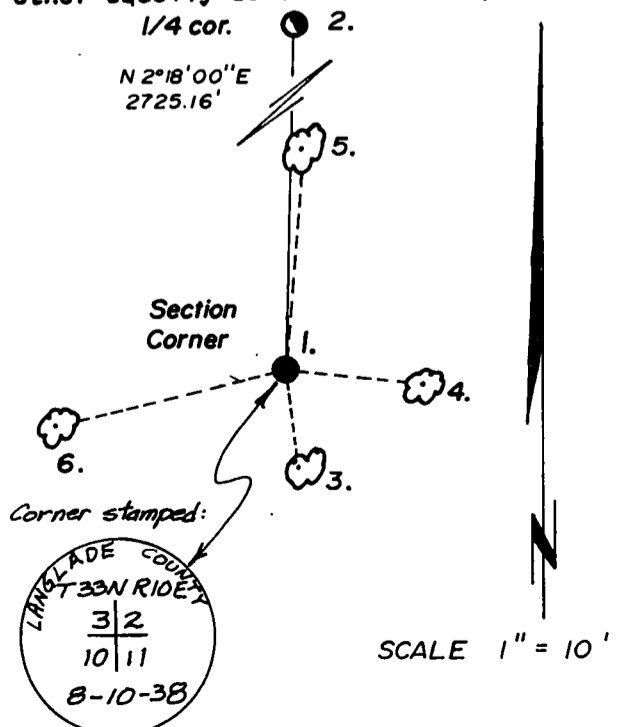
- (d) Show a plan view drawing depicting the relevant monuments and reference ties which is sufficient in detail to enable accurate relocation of the corner monument if the corner monument is disturbed. Indicate north.

## LEGEND

- 1) 4" diam. brass capped concrete filled iron post in place.  
2) 4" diam. concrete filled iron post in place.

## BLAZED AND SCRIBED BEARING TREES MADE:

- 3) 3" Tamarack S 07° E, 4.67 feet.  
4) 3" Tamarack S 85° E, 6.78 feet.  
5) 3" Tamarack N 04° E, 11.15 feet.  
6) 3" Tamarack S 77° W, 12.62 feet.  
(nails set in side of trees.)



(continued on reverse side.)

(e) Describe any material discrepancy between the location of the corner as restored or reestablished and the location of that corner as previously restored or reestablished by distance and direction. Show the discrepancy on the plan view drawing under (d), above. Show the distances between the corner as previously restored or reestablished and (1) the corner as restored or reestablished, and (2) to at least 2 of the witness monuments shown on the drawing in (d), above.

None.

(f) Was the corner restored through acceptance of (1) an obliterated evidence location, or, (2) a found perpetuated location?

Found perpetuated location.

(g&h) Was the corner reestablished through lost corner proportionate methods? If so, show the method, including the directions and distances to other public land survey corners used as evidence or used for proportioning in determining the corner location?

No. (See reverse side of this form.)

(1) I, Stephen J. Favorite, Reg. Land Surveyor #S-1616,  
(type or print name) certify that the corner location shown  
on this record was determined by me or under my direction and  
control and that this U.S. Public Land Survey Monument Record  
is correct and complete to the best of my knowledge and belief.

Stephen J. Favorite  
Signature

January 3, 1991  
Date

