

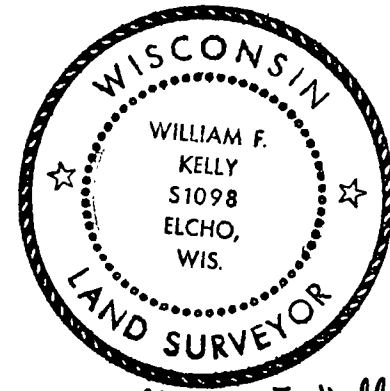
CERTIFIED LAND CORNER RESTORATION

Index No. C-17-18

State of Wisconsin }
 County of LANGLADE } ss.

I, William F. Kelly, do hereby certify that on the 24th day of April, 1975, I found evidence of the Meander corner of sect. 2 Township 33, North, Range 10 E, Fourth Principal Meridian, as described hereon; and that from this evidence I established a new monument and accessories as described hereon to perpetuate the original location of this corner.

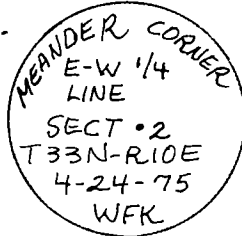
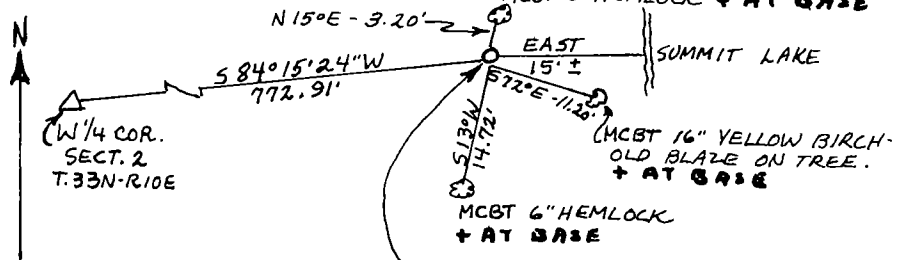
Resident witnesses:



William F. Kelly

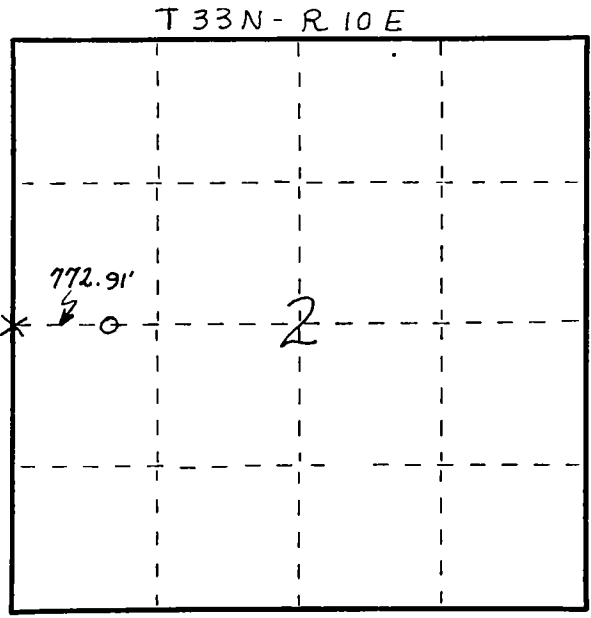
Description of corner evidence found:
 Corner located from Control Survey between the E-1/4 COR., the W-1/4 COR. and the mathematical location of the Center of Sect. 2, from survey by F.R. WINCENTSEN in 1963.

Description of monument and accessories I established to perpetuate the original location of this corner.



TREES MARKED NUBT ON TRUNK WITH + AT BASE. SET 2" B.I.P. WITH MARKED BRASS CAP AS MEANDER CORNER ON WEST SHORE OF SUMMIT LAKE.

FORM 985 H. C. MILLER CO., MILWAUKEE



○ = Corner monument restored.

Dated at ELCHO, Wis., this 24th day of April, 1975.

Signature William F. Kelly Title Registered Land Surveyor Registration No. 5-1098
 (County Surveyor, Registered Land Surveyor, or other duly authorized official)

Office of Register of Deeds, County of _____, I hereby certify that the within instrument was filed in this office for record on the _____ day of _____, 19____ at _____ o'clock _____ M.

(Register of Deeds)

By _____ Deputy