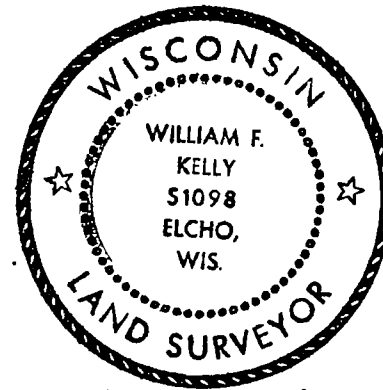


CERTIFIED LAND CORNER RESTORATION

Index No. C-19-20

State of Wisconsin }
 County of LANGLADE } ss.

History of original corner establishment:



William F. Kelly

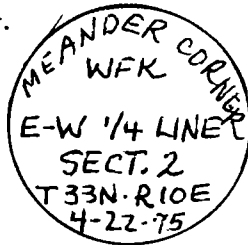
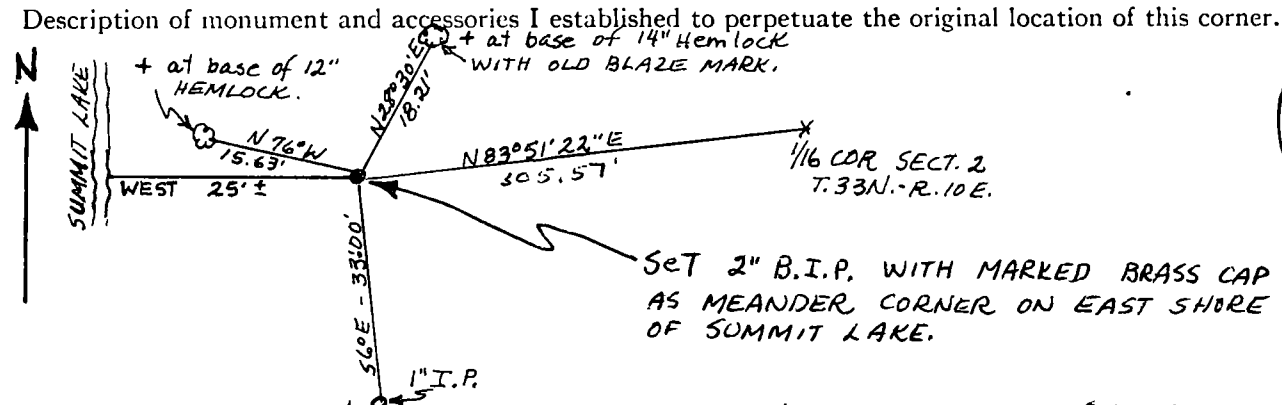
I William F. Kelly, do hereby certify that on the 22nd day of April, 1975, I found evidence of the Meander corner of Sect. 2 Township 33, North, Range 10 E, Fourth Principal Meridian, as described hereon; and that from this evidence I established a new monument and accessories as described hereon to perpetuate the original location of this corner.

Description of corner evidence found:

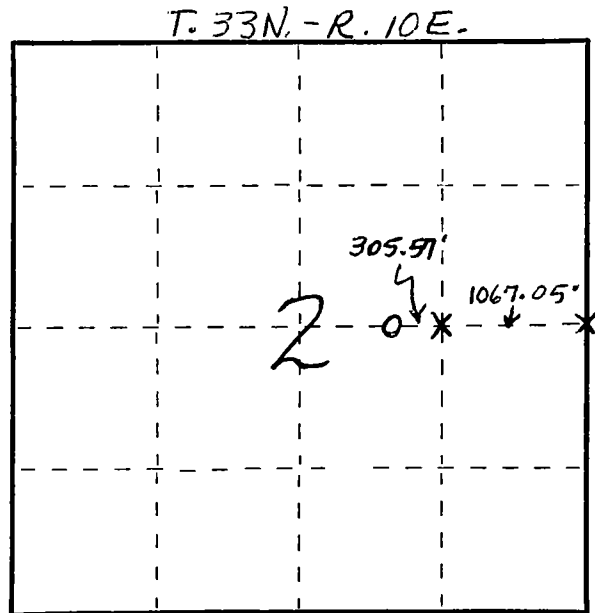
Corner located from Control Survey between the E-1/4 COR. and the W-1/4 COR. and the Mathematical location of the Center of Sect. 2 from Survey by F.R. WINCENTSEN in 1963.

Resident witnesses:

Description of monument and accessories I established to perpetuate the original location of this corner.



FORM 985 H. C. MILLER CO., MILWAUKEE



○ = Corner monument restored.

Dated at Elcho, Wis., this 22nd day of APRIL, 1975.

Signature William F. Kelly Title Registered Land Surveyor Registration No. 51098
 (County Surveyor, Registered Land Surveyor, or other duly authorized official)

Office of Register of Deeds, County of _____, I hereby certify that the within instrument was filed in this office for record on the _____ day of _____, 19____ at _____ o'clock _____ M.

(Register of Deeds)

By _____ Deputy