

CERTIFIED LAND CORNER RESTORATION

Index No. C-20

State of Wisconsin }
County of LANGLADE } ss.

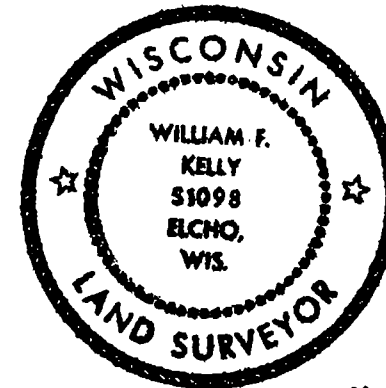
History of original corner establishment:

Corner Est. by Court Action in 1922

I WILLIAM F. KELLY do hereby certify that on the 24TH day of NOVEMBER, 1975, I found evidence of the E 1/16 corner of SECTION 2 Township 33, North, Range 10 E, Fourth Principal Meridian, as described hereon; and that from this evidence I established a new monument and accessories as described hereon to perpetuate the original location of this corner.

Description of corner evidence found:

LOCATED E 1/16 COR. SECTION 2. T. 33N. - R. 10E. FOUND 1" PIPE AND OLD BLAZED BEARING TREES.

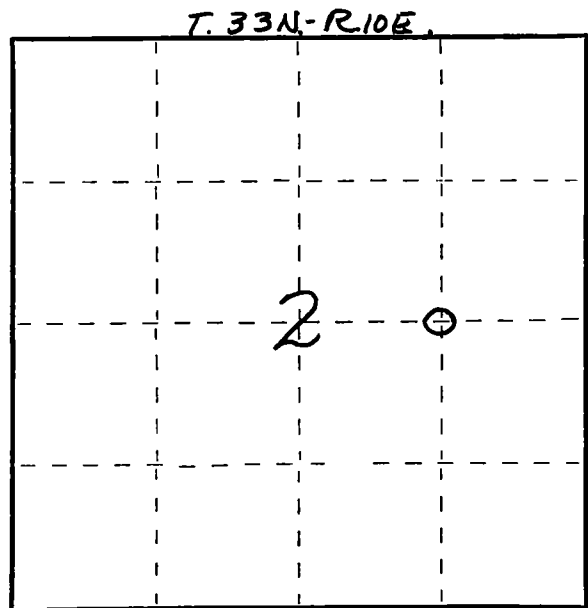
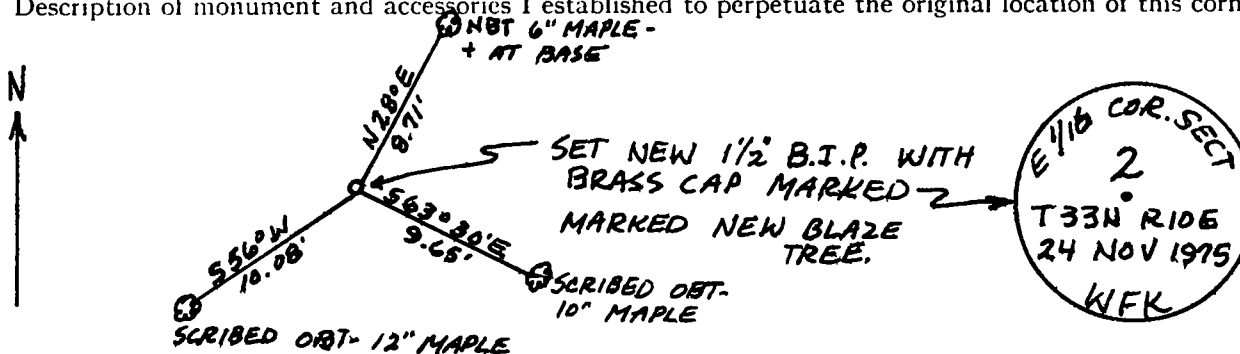


William F. Kelly

Resident witnesses:

.....
.....
.....

Description of monument and accessories I established to perpetuate the original location of this corner.



○ = Corner monument restored.

Dated at ELCHO, Wis., this 24TH day of NOVEMBER, 1975

Signature William F. Kelly Title REGISTERED LAND SURVEYOR Registration No. S 1098
(County Surveyor, Registered Land Surveyor, or other duly authorized official)

Office of Register of Deeds, County of....., I hereby certify that the within instrument was filed in this office for record on the.....day of....., 19..... at.....o'clock..... M.

.....
(Register of Deeds)

By.....Deputy