

CERTIFIED LAND CORNER RESTORATION

Index No. **C-21**

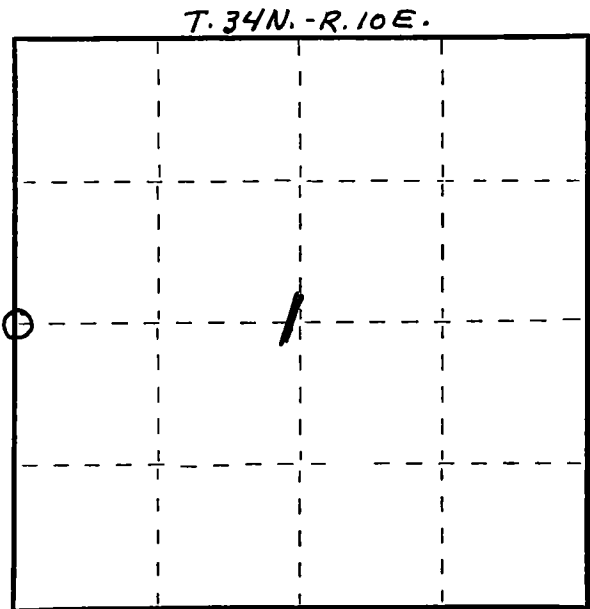
State of Wisconsin }  
 County of LANGLADE } ss.

I WILLIAM F. KELLY, do hereby certify that on the 29<sup>TH</sup> day of DECEMBER, 1976, I found evidence of the 1/4 corner of SECTION 2 and 1 Township 33, North, Range 10 E, Fourth Principal Meridian, as described hereon; and that from this evidence I established a new monument and accessories as described hereon to perpetuate the original location of this corner.

Resident witnesses:

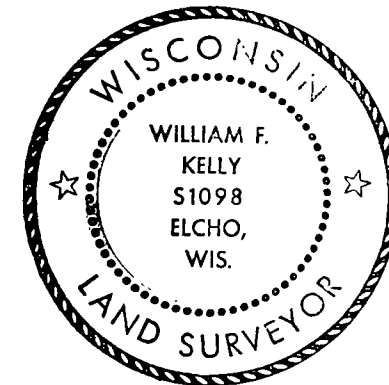
.....  
 .....  
 .....

FORM 985 H. C. MILLER CO., MILWAUKEE



○ = Corner monument restored.

History of original corner establishment:

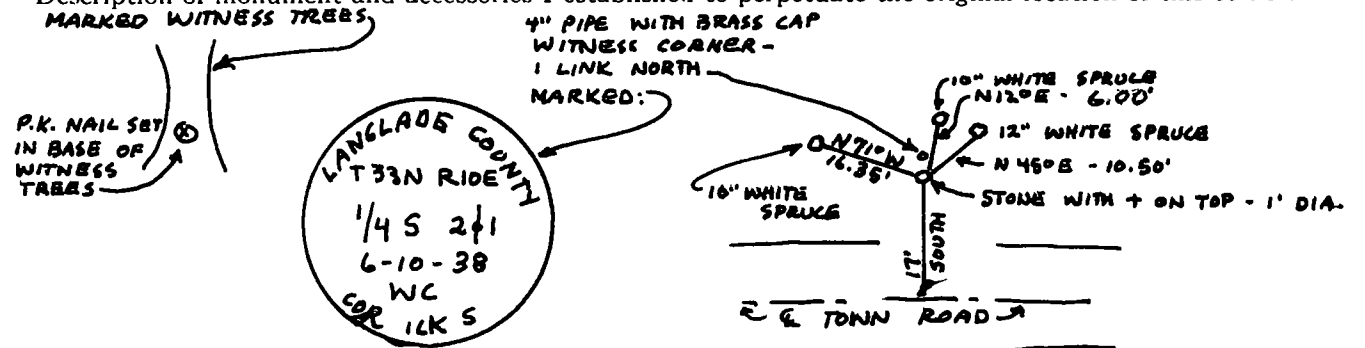


*William F. Kelly 12-29-76*

Description of corner evidence found:

**STONE WITH + MARK AND 4" PIPE WITH BRASS CAP AS A WITNESS CORNER. SET ON 1938 RESURUBY. CORNER NEXT TO LAKESIDE CEMETARY.**

Description of monument and accessories I established to perpetuate the original location of this corner.



Dated at ELCHO, Wis., this 29<sup>TH</sup> day of DECEMBER, 1976.

Signature William F. Kelly Title REGISTERED LAND SURVEYOR Registration No. 51098  
 (County Surveyor, Registered Land Surveyor, or other duly authorized official)

Office of Register of Deeds, County of \_\_\_\_\_, I hereby certify that the within instrument was filed in this office for record on the \_\_\_\_\_ day of \_\_\_\_\_, 19\_\_\_\_ at \_\_\_\_\_ o'clock \_\_\_\_\_ M.

.....  
 (Register of Deeds)

By \_\_\_\_\_ Deputy