

CERTIFIED LAND CORNER RESTORATION

Index No. C-D-19

State of Wisconsin }
 County of LANGLADE } ss.

History of original corner establishment:



William F. Kelly

I William F. Kelly, do hereby certify that on the 22nd day of April, 1975, I found evidence of the Meander corner of Sect. 2 Township 33, North, Range 10 E, Fourth Principal Meridian, as described hereon; and that from this evidence I established a new monument and accessories as described hereon to perpetuate the original location of this corner.

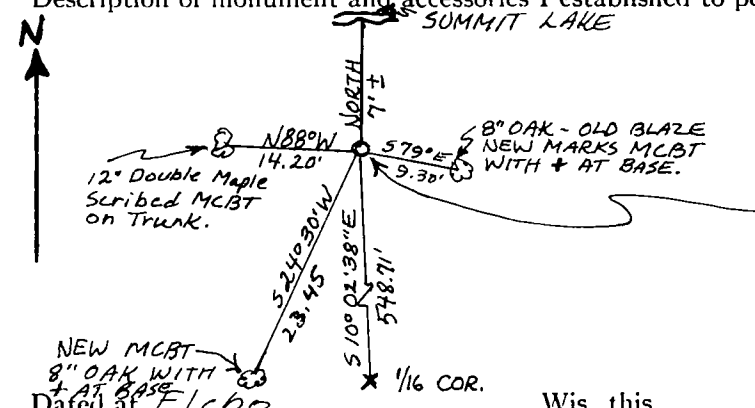
Description of corner evidence found:

Located 2 bearing trees and a 1" IP lying on its side, from Survey notes of 1963 by F.R. WINCENTSEN.

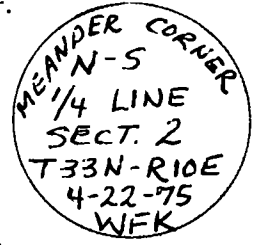
Resident witnesses:

.....

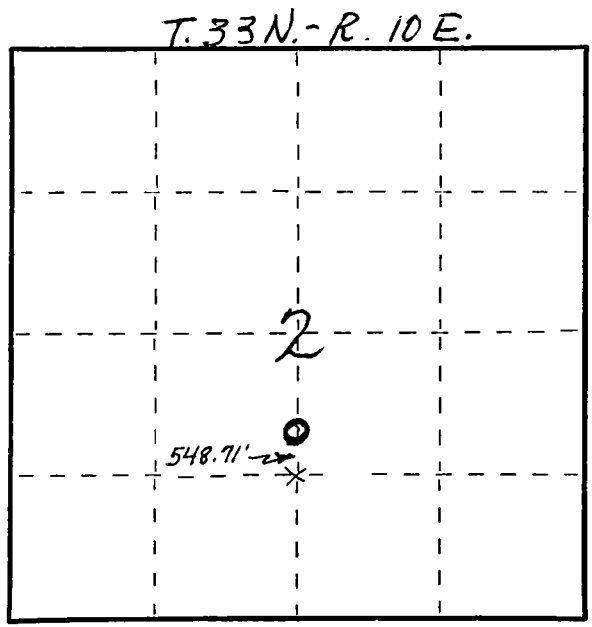
Description of monument and accessories I established to perpetuate the original location of this corner.



SET NEW 2" B.I.P. WITH BRASS CAP MARKED:



FORM 985 H. G. MILLER CO. - MILWAUKEE



○ = Corner monument restored.

Dated at Elcho, Wis., this 22nd day of April, 1975

Signature William F. Kelly Title Registered Land Surveyor Registration No. 5-1098
 (County Surveyor, Registered Land Surveyor, or other duly authorized official)

Office of Register of Deeds, County of, I hereby certify that the within instrument was filed in this office for record on the day of, 19..... at o'clock M.

.....
 (Register of Deeds)

By Deputy