

CERTIFIED LAND CORNER RESTORATION

Index No. E-19

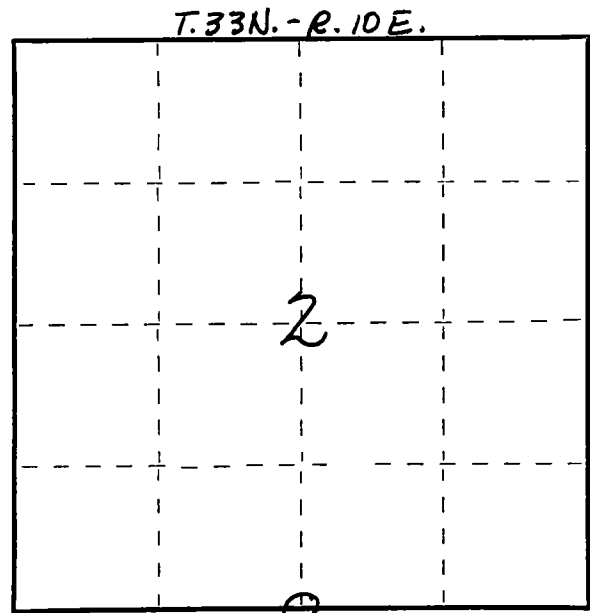
State of Wisconsin }  
 County of LANGLADE } ss.

I WILLIAM F. KELLY, do hereby certify that on the 4TH day of DECEMBER, 1975, I found evidence of the 1/4 SECTION corner of SECTIONS 2 & 11 Township - 33, North, Range 10 E, Fourth Principal Meridian, as described hereon; and that from this evidence I established a new monument and accessories as described hereon to perpetuate the original location of this corner.

Resident witnesses:

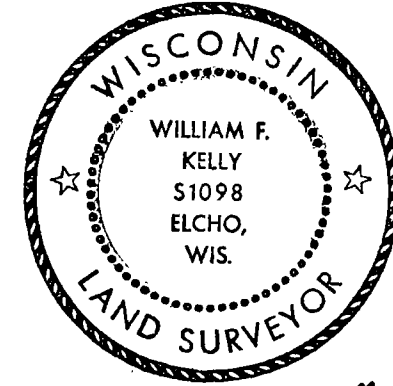
JOHN JESKE, JR.

FORM 985 M. C. MILLER CO., MILWAUKEE



○ = Corner monument restored.

History of original corner establishment:

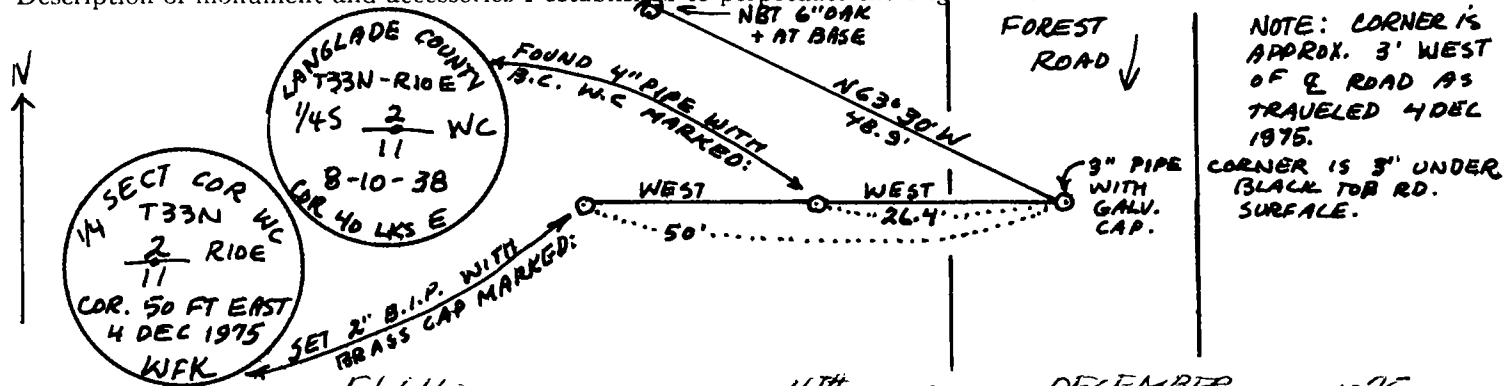


*William F. Kelly*

Description of corner evidence found:

EXCAVATED ROAD AND FOUND 1/4 SECTION CORNER 2/11 T. 33N. - R. 10E. 3" PIPE WITH CAP. CAP HAS + MARK.

Description of monument and accessories I established to perpetuate the original location of this corner.



Dated at ELCHO, Wis., this 4TH day of DECEMBER, 1975.

Signature William F. Kelly Title REGISTERED LAND SURVEYOR Registration No. S1098  
 (County Surveyor, Registered Land Surveyor, or other duly authorized official)

Office of Register of Deeds, County of \_\_\_\_\_, I hereby certify that the within instrument was filed in this office for record on the \_\_\_\_\_ day of \_\_\_\_\_, 19\_\_\_\_ at \_\_\_\_\_ o'clock \_\_\_\_\_ M.

(Register of Deeds)

By \_\_\_\_\_ Deputy