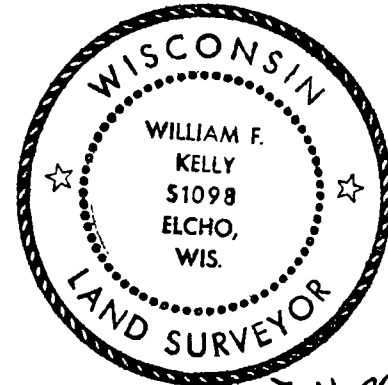


CERTIFIED LAND CORNER RESTORATION

Index No. B-23

State of Wisconsin }  
County of LANGLADE } ss.

History of original corner establishment:



*William F. Kelly*

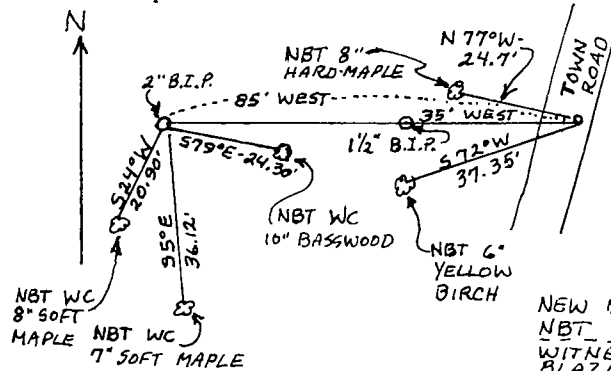
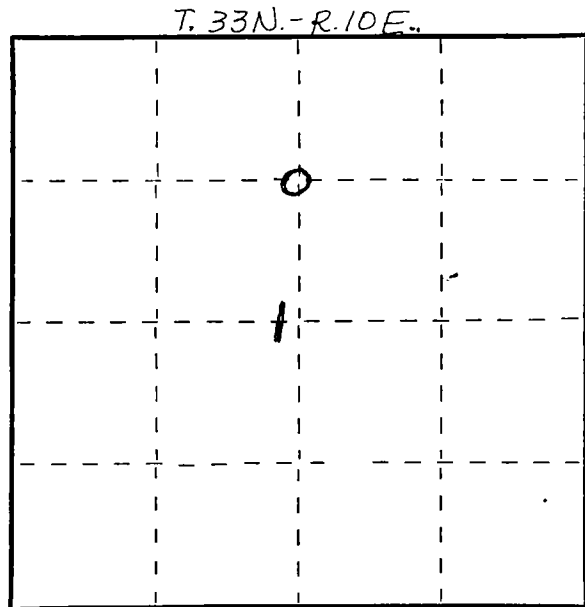
I William F. Kelly, do hereby certify that on the 5<sup>th</sup> day of May, 1975, I found evidence of the N 1/8 corner of SECT. 1 Township 33, North, Range 10E, Fourth Principal Meridian, as described hereon; and that from this evidence I established a new monument and accessories as described hereon to perpetuate the original location of this corner.

Description of corner evidence found:

Resident witnesses:

.....  
.....  
.....

Description of monument and accessories I established to perpetuate the original location of this corner.



SET N 1/8 COR ON N-S 1/4 LINE SECT. 1 T. 33N. - R. 10E FROM CONTROL SURVEY BETWEEN THE N and S 1/4 CORNER SECT. 1. CORNER IS A 1" GALV. IRON PIPE IN TOWN ROAD. SET WITNESS CORNER 35' and 85' WEST OF CORNER.

WC N 1/8 CORNER  
N-S 1/4 LINE  
SECT. 1  
COR 85 FT. EAST  
T 33N-R 10E  
5-5-75  
WFK

WC N 1/8 CORNER  
N-S 1/4 LINE  
SECT. 1  
COR 35 FT E  
T 33N-R 10E  
5-5-75  
WFK

Dated at ELCHO, Wis., this 5 day of May, 1975

Signature William F. Kelly Title Registered Land Surveyor Registration No. 51098  
(County Surveyor, Registered Land Surveyor, or other duly authorized official)

Office of Register of Deeds, County of ....., I hereby certify that the within instrument was filed in this office for record on the ..... day of ....., 19..... at ..... o'clock ..... M.

(Register of Deeds)

By ..... Deputy

○ = Corner monument restored.