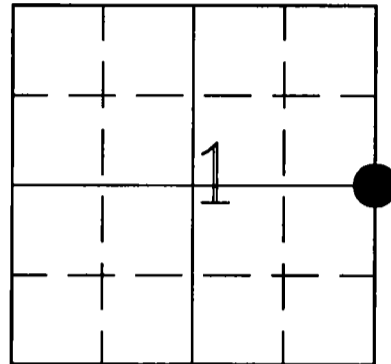


# U.S. PUBLIC LAND SURVEY MONUMENT RECORD

**HISTORY OF ORIGINAL CORNER ESTABLISHMENT AND SUBSEQUENT RESTORATION AND DESCRIPTION OF ANY RECORD, MONUMENT OCCUPATIONAL, TESTIMONIAL OR OTHER EVIDENCE CONSIDERED:**

The original corner was established in 1860 by Hiram C. Fellows. Original Bearing Trees: Hemlock 8" N13W Blks., Hemlock 10" N15E 10lks. Webley found this corner in 1917 but did not describe it. Kowalke and Borth, in 1936, "Found 3" galvanized iron pipe with stamped cap set by County Surveyor". On 8/31/98, Don Buza and Gerry Bahar found the 3" galv. pipe in a fence intersection, accepted as corner location, and tied it out.

● = LOCATION OF CORNER

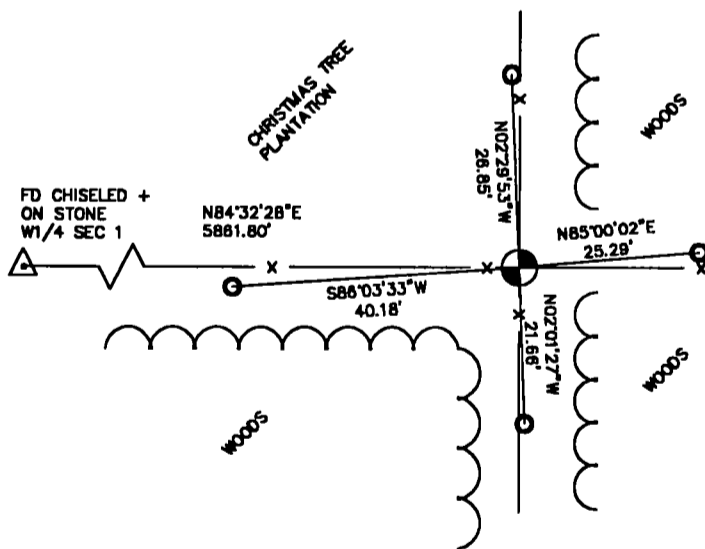


SECTION 1  
 TOWNSHIP 33 NORTH, RANGE 10 EAST  
 TOWN OF UPHAM  
LANGLADE COUNTY, WISCONSIN

**CORNER WAS: (CHECK ALL THAT APPLY)**

- RESTORED THROUGH ACCEPTANCE OF AN OBLITERATED EVIDENCE LOCATION
- RESTORED THROUGH ACCEPTANCE OF A FOUND PERPETUATED LOCATION
- CONSIDERED A LOST CORNER AND REESTABLISHED THROUGH LOST CORNER PROPORTIONATE METHODS (INCLUDE A PLAN VIEW DRAWING SHOWING DISTANCES AND DIRECTIONS TO OTHER PUBLIC LAND SURVEY CORNERS USED FOR PROPORTIONING AND DETERMINING THE CORNER LOCATION)
- RESTORED OR REESTABLISHED IN A LOCATION THAT DIFFERS FROM A PREVIOUS RESTORATION OR REESTABLISHMENT (INCLUDE A PLAN VIEW DRAWING AND INDICATE WHAT WAS SET AND/OR FOUND)
- CHECK IF THERE IS ADDITIONAL INFORMATION ON BACK

**DESCRIBE THE MONUMENT AND ACCESSORIES USED TO PERPETUATE THE LOCATION OF THE CORNER. (INCLUDE A PLAN VIEW DRAWING AND INDICATE WHAT WAS SET AND/OR FOUND) ALSO INCLUDE FOUR TIES TO THE SECTION CORNER AND DESCRIPTION OF THE TIES.**



⊙ FD 3" GALV PIPE W/STAMPED CAP

○ SET 1" X 30" PIPES AT TIES

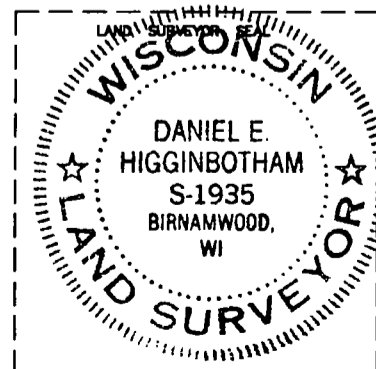


3310012000

**DANIEL E. HIGGINBOTHAM**

(Type or print name) CERTIFY THAT THE CORNER LOCATION SHOWN ON THIS RECORD WAS DETERMINED BY ME OR UNDER MY DIRECTION AND CONTROL AND THAT THIS U.S. PUBLIC LAND SURVEY MONUMENT RECORD IS CORRECT AND COMPLETE TO THE BEST OF MY KNOWLEDGE AND BELIEF.

*Daniel E. Higginbotham*      2/28/00  
 SIGNATURE      DATE



INDEX NO. C25 33-10