

4330935 0000

U.S. PUBLIC LAND SURVEY MONUMENT RECORD

(Prepared and as required by S. A-E 7.08 WI Administrative Code)

The SOUTHEAST corner of Section 35 T. 33 N., R. 9 E., Langlade County, WI
Corner was (check all that apply)

- Restored through acceptance of an obliterated evidence location.
- Restored through acceptance of a found perpetuated location.
- Determined to be lost and re-established through proportionate methods. (show bearings and distances to PLSS corners used for proportioning.)
- Restored/recovered/re-established in a location that differs from a previously established position. (Show difference in plan view below.)
- Check here if additional information is shown on the reverse side of this form.

Describe record evidence, recovered physical evidence, occupational evidence, testimonial evidence, and all other evidence considered in the recovery/restoration of the corner.

1859 - Original corner established by H.C. Fellows - bearing trees: Maple, 14", N47°W, 20 links, Birch, 14", N71°E, 47 links, Birch, 12", S89°E, 48 links and a Ironwood, 8", S44°W, 25 links.

1995 - T. Arnott set and measured new ties to the Section corner but never completed the monument record.

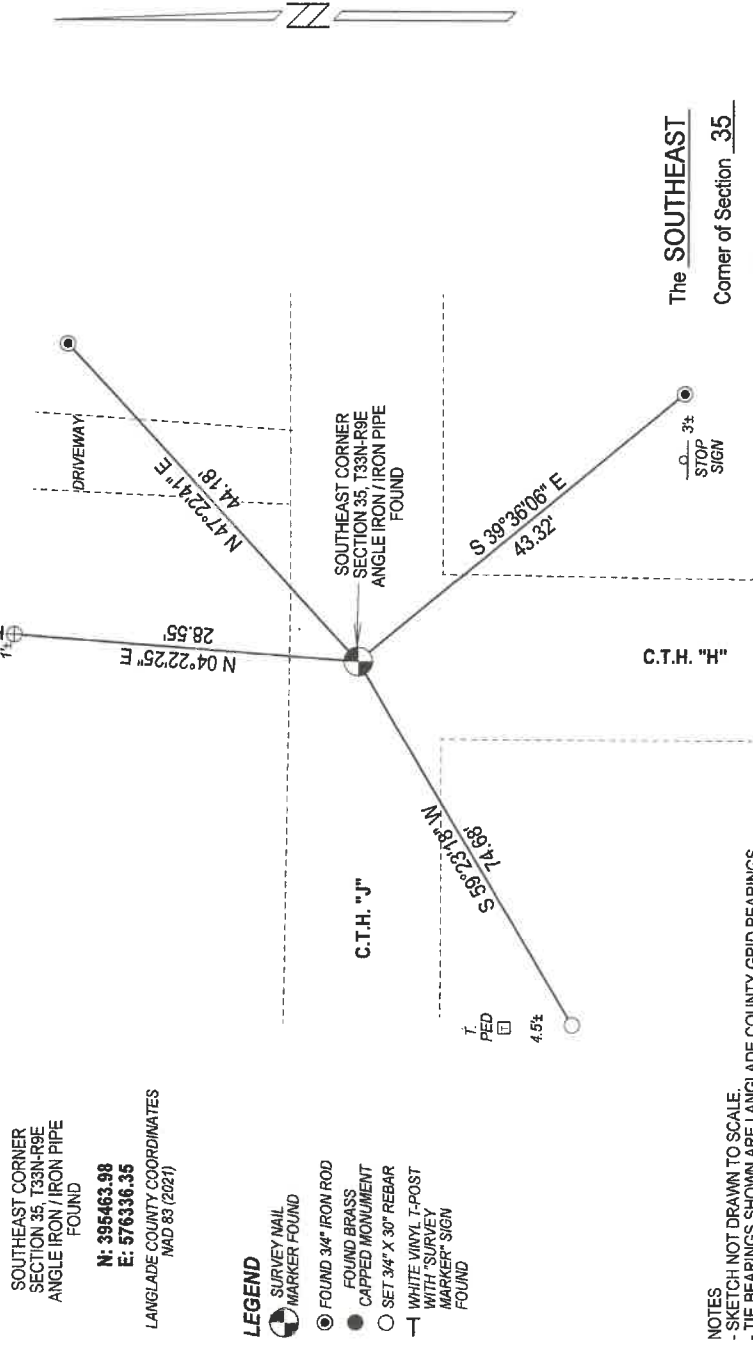
2012 - C. Brinkmeier set a PK nail at the corner location from Arnott's measurements and filed a tie sheet.

2022 - I found an existing angle iron and iron pipe at the corner location. I tied it out as shown below.

Physical description of the monument set:

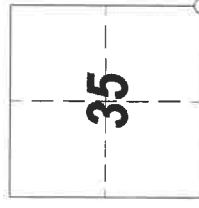
Found existing angle iron and iron pipe at corner location and tied it out as follows.

Describe the accessories used to perpetuate the location of the corner. Include a plan view drawing and indicate accessories found/set. Describe measuring point on bearing trees. Show any topographic features that would aid in future recovery of the corner.



NOTES
 - SKETCH NOT DRAWN TO SCALE.
 - TIE BEARINGS SHOWN ARE LANGLADE COUNTY GRID BEARINGS.
 - ALL TIES MEASURED ELECTRONICALLY WITH TOTAL STATION.

The SOUTHEAST
 Corner of Section 35
 T. 33 N., R. 9 E.
 Langlade County, WI



○ = Location of corner



I, Michael J. Hoffman certify that the corner location shown on this record was determined by me or under my direction and control and that this U.S. Public Land Survey Monument Record is correct and complete to the best of my knowledge and belief.

Michael J. Hoffman 12/12/2022 Date
 Signature

4330935 0000
U.S. PUBLIC LAND SURVEY MONUMENT RECORD

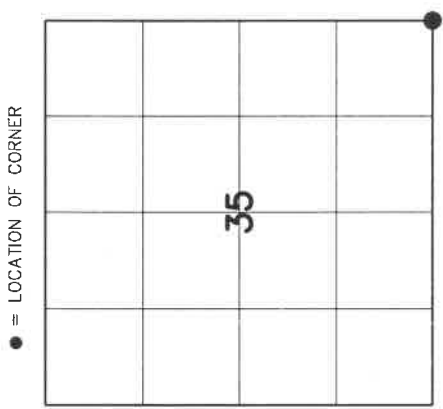
HISTORY OF ORIGINAL CORNER ESTABLISHMENT AND SUBSEQUENT RESTORATION AND DESCRIPTION OF ANY RECORD, MONUMENT OCCUPATIONAL, TESTIMONIAL OR OTHER EVIDENCE CONSIDERED:

THE ORIGINAL CORNER WAS SET BY FELLOWS IN MAY OF 1859

WITH THE ORIGINAL BEARING TREES OF:

- 14" MAPLE -- N47°W 20 LINKS
- 14" BIRCH -- N71°E 47 LINKS
- 12" BIRCH -- S89°E 48 LINKS
- 8" IRONWOOD -- S44°W 25 LINKS

IN THE FALL OF 1995 ARNOTT SET AND MEASURED NEW TIES TO THE SECTION CORNER BUT NEVER COMPLETED THE MONUMENT RECORD. USING ARNOTT'S MEASUREMENTS I SET A PK NAIL AT THE SECTION CORNER.



● = LOCATION OF CORNER

SECTION 35

TOWNSHIP 33 NORTH, RANGE 9 EAST

TOWN OF SUMMIT

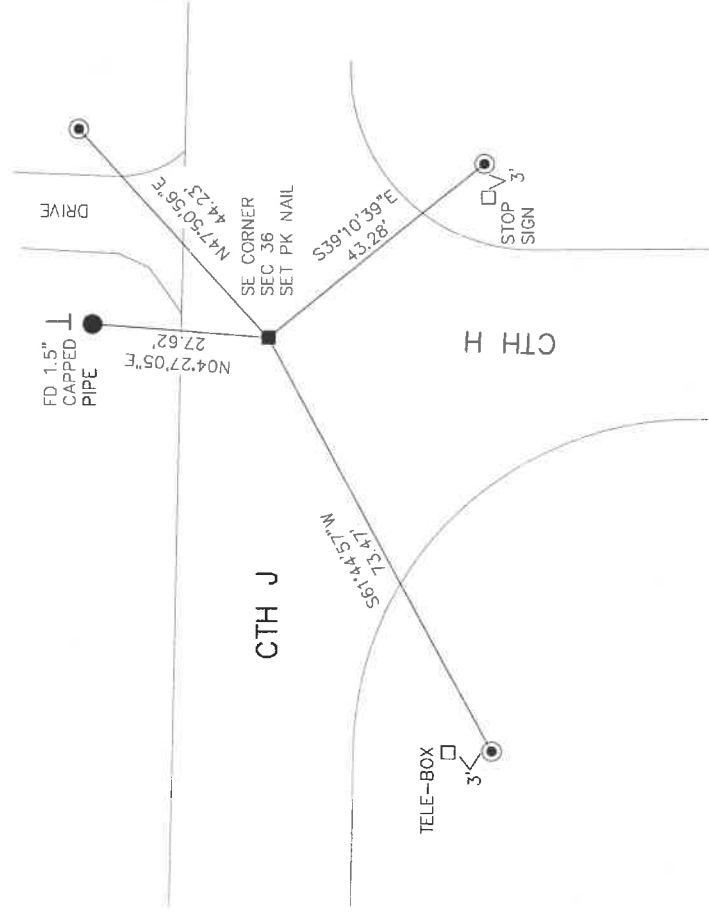
LANGLADE COUNTY, WISCONSIN

CORNER WAS: (CHECK ALL THAT APPLY)

- RESTORED THROUGH ACCEPTANCE OF AN OBLITERATED EVIDENCE LOCATION
- RESTORED THROUGH ACCEPTANCE OF A FOUND PERPETUATED LOCATION
- CONSIDERED A LOST CORNER AND REESTABLISHED THROUGH LOST CORNER PROPORTIONATE METHODS (INCLUDE A PLAN VIEW DRAWING SHOWING DISTANCES AND DIRECTIONS TO OTHER PUBLIC LAND SURVEY CORNERS USED FOR PROPORTIONING AND DETERMINING THE CORNER LOCATION)
- RESTORED OR REESTABLISHED IN A LOCATION THAT DIFFERS FROM A PREVIOUS RESTORATION OR REESTABLISHMENT (INCLUDE A PLAN VIEW DRAWING AND INDICATE WHAT WAS SET AND/OR FOUND)
- CHECK IF THERE IS ADDITIONAL INFORMATION ON BACK

DESCRIBE THE MONUMENT AND ACCESSORIES USED TO PERPETUATE THE LOCATION OF THE CORNER. (INCLUDE A PLAN VIEW DRAWING AND INDICATE WHAT WAS SET AND/OR FOUND) ALSO INCLUDE FOUR TIES TO THE SECTION CORNER AND DESCRIPTION OF THE TIES.

- FOUND 3/4" IRON ROD
- BEARINGS REFERENCED TO
MAGNETIC NORTH
- T -- SET 6' WHITE T-POST

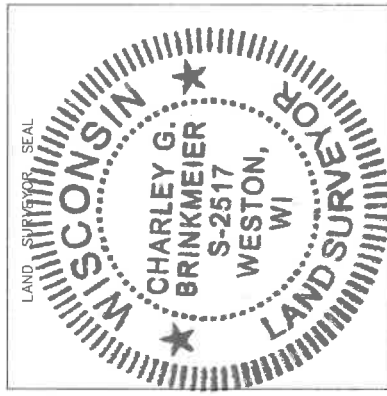


CHARLEY G. BRINKMEIER

(Type or print name) CERTIFY THAT THE CORNER LOCATION SHOWN ON THIS RECORD WAS DETERMINED BY ME OR UNDER MY DIRECTION AND CONTROL AND THAT THIS U.S. PUBLIC LAND SURVEY MONUMENT RECORD IS CORRECT AND COMPLETE TO THE BEST OF MY KNOWLEDGE AND BELIEF.

Charley G. Brinkmeier
SIGNATURE

3-12-12
DATE

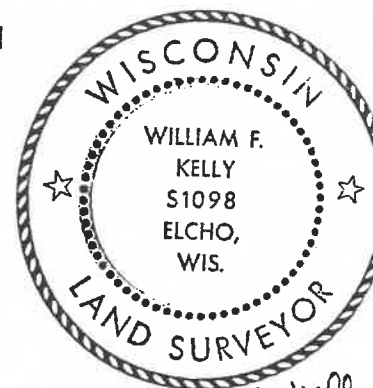


CERTIFIED LAND CORNER RESTORATION

Index No. 2-21

State of Wisconsin }
County of LANGLADE } ss.

History of original corner establishment:



33-9

I WILLIAM F. KELLY, do hereby certify that on the 26TH day of SEPTEMBER, 1977, I found evidence of the SECTION corner of SECTIONS 1, 2, 35 & 36 Township 32 & 33, North, Range 9E, Fourth Principal Meridian, as described hereon; and that from this evidence I established a new monument and accessories as described hereon to perpetuate the original location of this corner.

Description of corner evidence found:

LOCATED N.W. CORNER SECTION 1 T. 32N. - R. 9E. FROM OWENS ILLINOIS CONTROL SURVEY AND NOTES FROM PREVIOUS SURVEY FROM M. HUTCHINSON.

William F. Kelly 9-26-77

Resident witnesses:

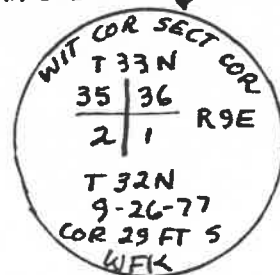
.....
.....
.....

Description of monument and accessories I established to perpetuate the original location of this corner.

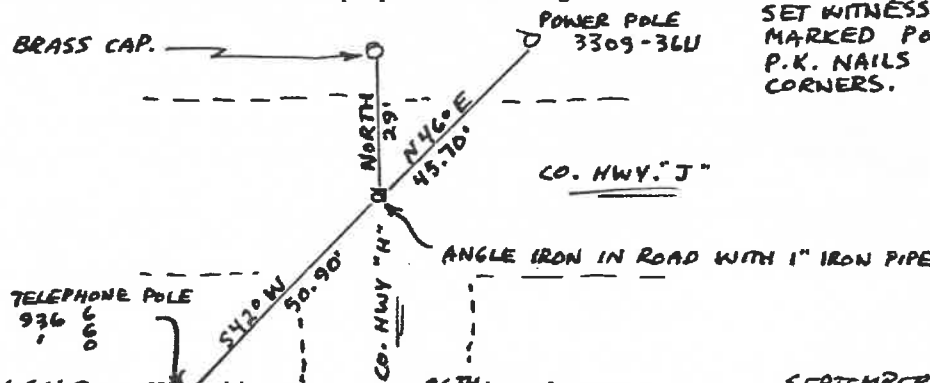
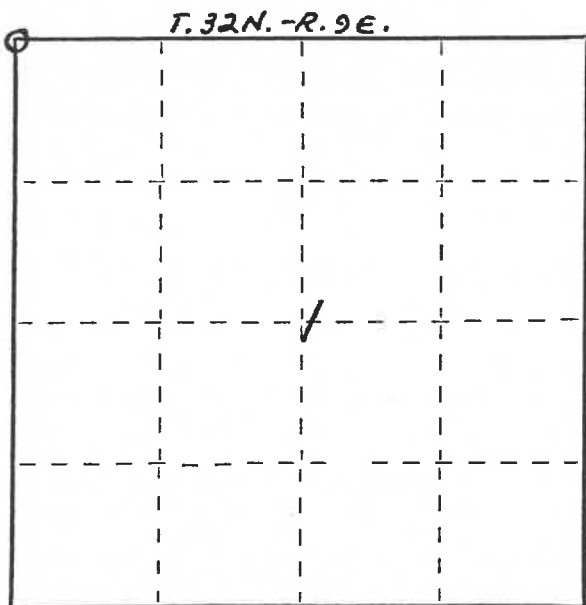
SET WITNESS CORNER.

2" x 42" IRON PIPE WITH BRASS CAP.

MARKED:



SET WITNESS CORNER AND MARKED POLES WITH P.K. NAILS AS WITNESS CORNERS.



Dated at ELCHO, Wis., this 26TH day of SEPTEMBER, 1977

Signature William F. Kelly Title REGISTERED LAND SURVEYOR Registration No. S1098
(County Surveyor, Registered Land Surveyor, or other duly authorized official)

Office of Register of Deeds, County of, I hereby certify that the within instrument was filed in this office for record on the day of, 19..... at o'clock M.

.....
(Register of Deeds)

By Deputy

○ = Corner monument restored.